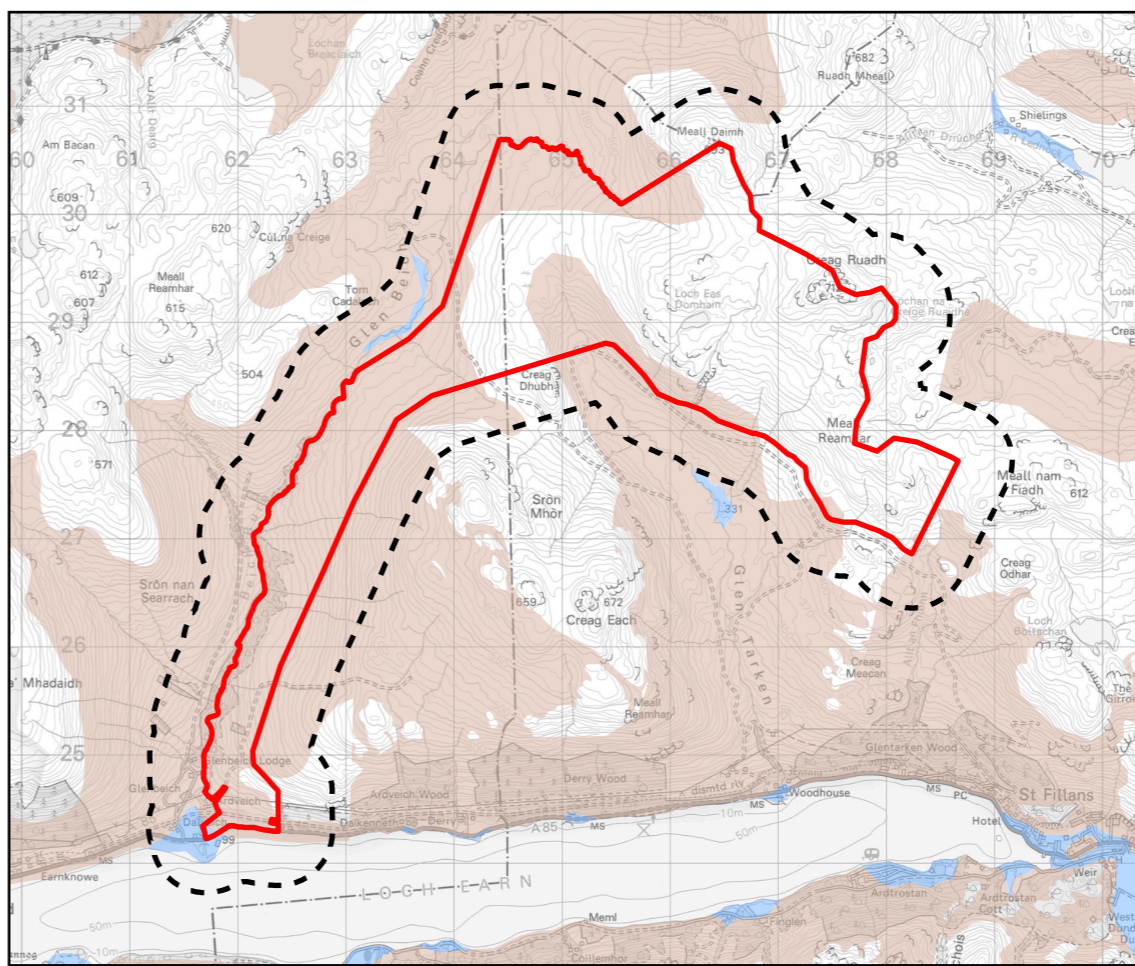


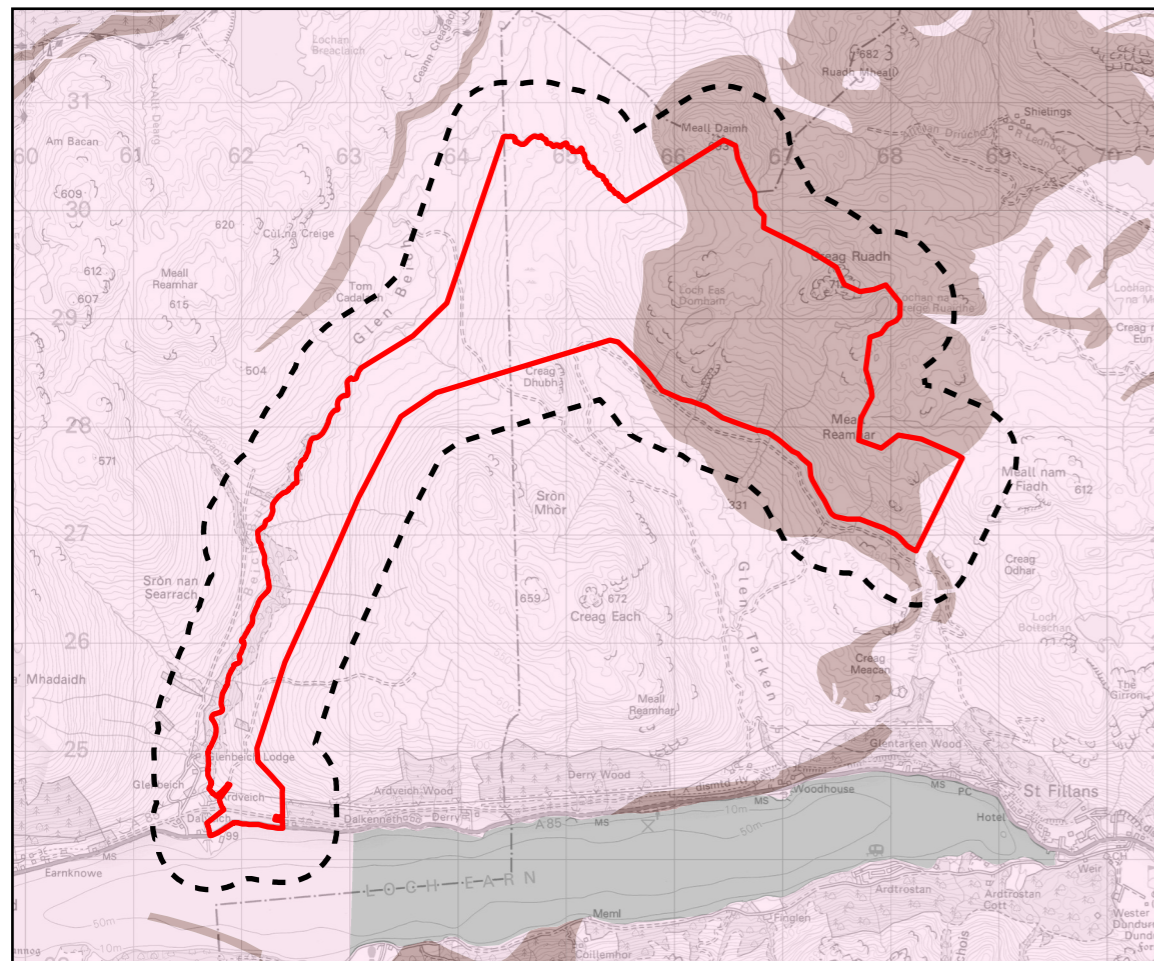
MAP EXTRACT

Scale - 1:300,000 @ A3



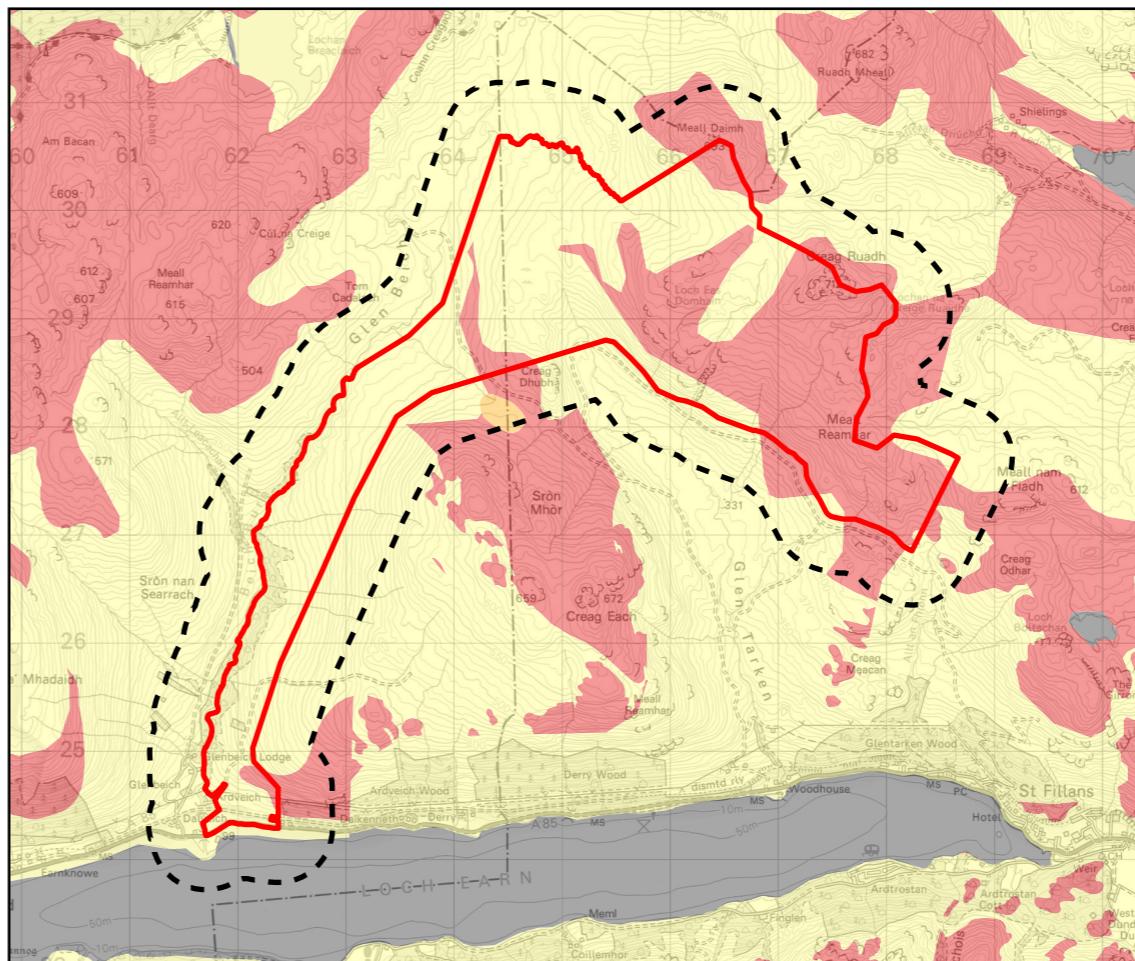
SUPERFICIAL AQUIFERS

Scale - 1:70,000 @ A3



BEDROCK AQUIFERS

Scale - 1:70,000 @ A3



GROUNDWATER VULNERABILITY

Scale - 1:70,000 @ A3

**Key**

- Proposed Site Boundary
- Site Boundary 500 m Buffer

**Superficial Deposits Aquifer Productivity Scotland, Version 2**

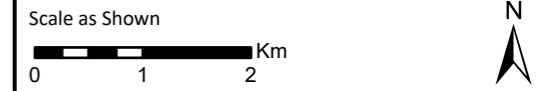
- Intergranular; Moderate to High Productivity
- Not a significant aquifer

**Bedrock Aquifer Productivity Scotland, Version 2**

- Fracture; Low Productivity
- Fracture; Very Low Productivity
- Unknown Geology

**Groundwater Vulnerability**

- 5 - Vulnerable to Most Pollutants, with Rapid Impact in Many Scenarios.
- 4a - Vulnerable to Those Pollutants not Readily Adsorbed or Transformed. Less Likely to Have Clay Present in Superficial Deposits (Therefore Generally Higher Vulnerability Than 4b).
- 4b - Vulnerable to Those Pollutants not Readily Adsorbed or Transformed. More Likely to Have Clay Present in Superficial Deposits (Therefore Generally Lower Vulnerability Than 4a).
- 0 - Not Sufficient Data to Classify Vulnerability: e.g. Below Lochs; in Urban Areas Where Geological and/or Soils Data are Missing; or Where Superficial Deposits are Mapped but not Classified.



**Figure 8.7**  
**Groundwater Vulnerability**  
**Glentarken Wind Farm**  
**EIAR 2024**