

GLENTARKEN WIND FARM SECTION 36 APPLICATION

Pre-Application Consultation Report
December 2024



sse
Renewables

For a better
world of energy

REPORT VERSIONS

Version	Author	Reviewer	Approver	Date
Rev 01	[REDACTED]	[REDACTED]	[REDACTED]	2023-2024

Prepared by:

[REDACTED]

SSE Renewables
1 Waterloo St
Glasgow
G2 6AY

[REDACTED]

CONTENTS

1.	INTRODUCTION	4
1.1	THE PROPOSED DEVELOPMENT	4
1.2	PRE-APPLICATION CONSULTATION - AIMS	4
2.	CONSULTATION ACTIVITIES	5
2.1	STAKEHOLDER PRE-APPLICATION CONSULTATION	5
2.2	EIA SCOPING	6
2.3	COMMUNITY PRE-APPLICATION CONSULTATION	7
2.4	OTHER KEY STAKEHOLDERS	9
2.5	LOCAL STEM ENGAGEMENT	9
2.6	PUBLIC EXHIBITIONS	10
3.	SUMMARY AND CONCLUSION	27
	APPENDIX A – COMMUNITY CONSULTATION LOG	28
	APPENDIX B – FIRST PUBLIC EXHIBITION MATERIALS	29
	APPENDIX C – SECOND PUBLIC EXHIBITION MATERIALS	30
	APPENDIX D – THIRD PUBLIC EXHIBITION MATERIALS	31

1. INTRODUCTION

1.1 THE PROPOSED DEVELOPMENT

SSE Generation Limited ('the Applicant') is proposing to construct and operate a renewable energy generating station with capacity of greater than 50 Megawatts (MW) known as Glentarken Wind Farm (the 'Proposed Development') which includes up to 12 wind turbine generators (WTG's) of up to 180 m tip height, a battery energy storage system (BESS), and associated infrastructure. The Proposed Development, previously known as Drummond Wind Farm, is located on Drummond Estate which lies between the settlements of St Fillans and Lochearnhead, approximately 45 km west of Perth, 2.8 km east of Lochearnhead and within Stirling, and Perth & Kinross local authority areas.

The proposals for which consent under Section 36 of the Electricity Act 1989 is sought by the Applicant, are described in the Environmental Impact Assessment report ('EIA report') as required by the Electricity Works (Environmental Impact Assessment) (Scotland) Regulations 2017, as amended ('the EIA Regulations').

The application for consent (the 'S36 application') has been prepared by SSE Renewables Developments (UK) Ltd (SSER) ('the Developer') on behalf of the Applicant and will be made to Scottish Ministers via the Scottish Government Energy Consents Unit (ECU). The Applicant is also seeking direction under section 57(2) of the Town and Country Planning (Scotland) Act 1997 ('the 1997 Act') that planning permission would be deemed to be granted in respect of the Proposed Development.

The Proposed Development has been subject to an iterative design process, giving due consideration to environmental constraints specific to the site and surrounding areas. Further detail on the iterative design process is provided in Chapter 3: Evolution of Design and Alternatives (EIAR Volume 2).

The Proposed Development would contribute to legislated climate change targets and government policy objectives in helping Scotland to reduce its greenhouse gas emissions.

1.2 PRE-APPLICATION CONSULTATION - AIMS

Pre-application consultation (PAC) reports are a mandatory requirement for 'Major' or 'National' projects, as set out in the Town & Country Planning (Development Management Procedure) (Scotland) Regulations 2022 ('the Regulations'). As the application for the Proposed Development is made under Section 36 of The Electricity Act 1989 and will be submitted to the Scottish Ministers, there is no such mandatory requirement. Nevertheless, as a responsible developer, SSER is committed to a comprehensive strategy of community engagement to ensure communities and local stakeholders are fully informed about the Proposed Development and to ensure that they can contribute their views. As such, a wide range of public consultation has been undertaken prior to the submission of the application, in line with best practice.

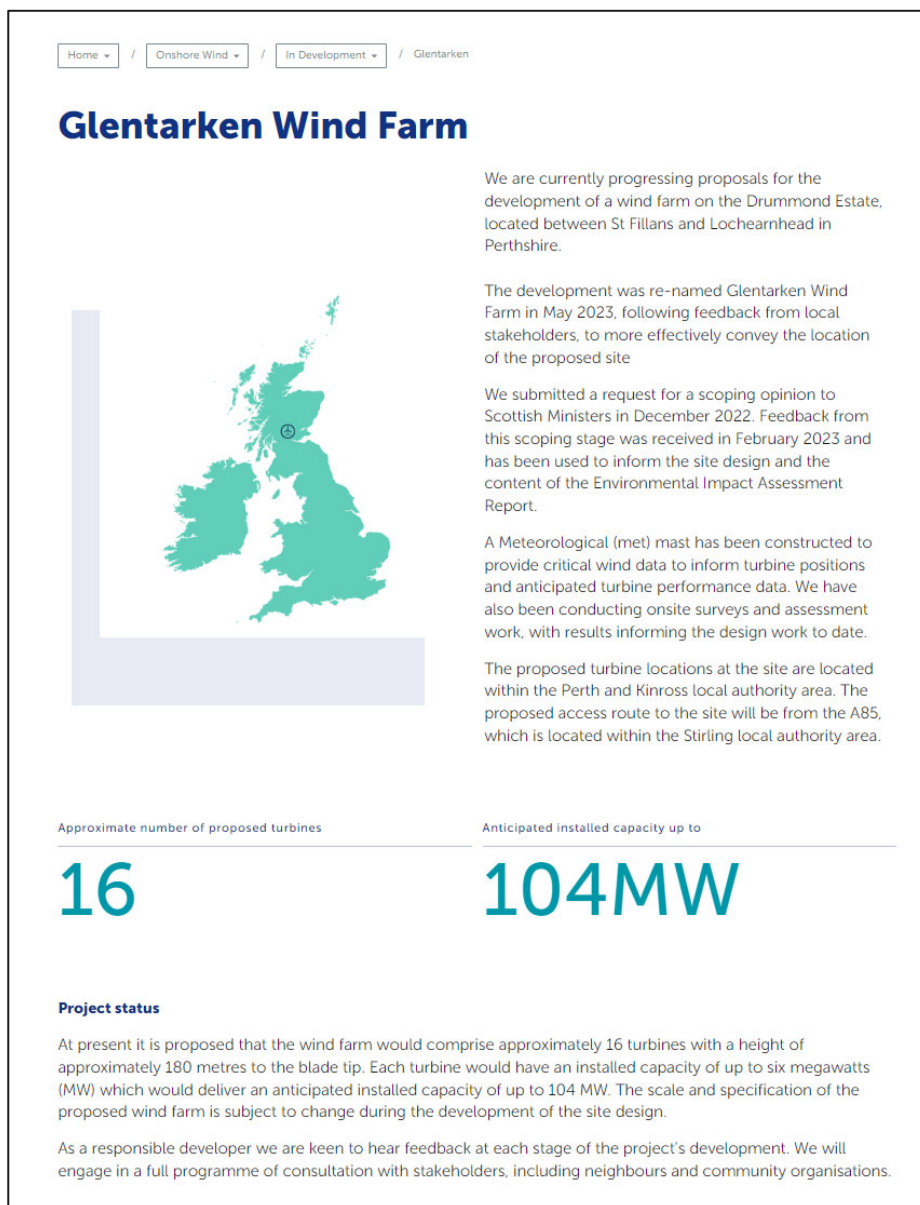
This PAC report aims to provide information on all activities undertaken to engage with surrounding communities prior to submission of the application, and to demonstrate where local views on the Proposed Development have been taken into account. Copies of consultation material together with the responses and outcomes of the consultation process are included within, or as appendices to this report.

2. CONSULTATION ACTIVITIES

2.1 STAKEHOLDER PRE-APPLICATION CONSULTATION

Consultation and engagement with stakeholders started at the scoping stage of the development process, with advice and input from key consultees being sought, as SSER recognises that this engagement and feedback from key stakeholders informs decisions about the Proposed Development.

At this early stage, a project website was developed to share key information with communities and other key stakeholders and remain updated regarding the project’s progress. The project website can be found at: www.sserenewables.com/glentarken An extract from the website at this early stage is illustrated in Figure 1.



Home / Onshore Wind / In Development / Glentarken

Glentarken Wind Farm

We are currently progressing proposals for the development of a wind farm on the Drummond Estate, located between St Fillans and Lochearnhead in Perthshire.

The development was re-named Glentarken Wind Farm in May 2023, following feedback from local stakeholders, to more effectively convey the location of the proposed site

We submitted a request for a scoping opinion to Scottish Ministers in December 2022. Feedback from this scoping stage was received in February 2023 and has been used to inform the site design and the content of the Environmental Impact Assessment Report.

A Meteorological (met) mast has been constructed to provide critical wind data to inform turbine positions and anticipated turbine performance data. We have also been conducting onsite surveys and assessment work, with results informing the design work to date.

The proposed turbine locations at the site are located within the Perth and Kinross local authority area. The proposed access route to the site will be from the A85, which is located within the Stirling local authority area.

Approximate number of proposed turbines

16

Anticipated installed capacity up to

104MW

Project status

At present it is proposed that the wind farm would comprise approximately 16 turbines with a height of approximately 180 metres to the blade tip. Each turbine would have an installed capacity of up to six megawatts (MW) which would deliver an anticipated installed capacity of up to 104 MW. The scale and specification of the proposed wind farm is subject to change during the development of the site design.

As a responsible developer we are keen to hear feedback at each stage of the project’s development. We will engage in a full programme of consultation with stakeholders, including neighbours and community organisations.

Figure 1 Extract from Glentarken Project Website

2.2 EIA SCOPING

The purpose of EIA Scoping is to:

- Ensure that statutory consultees and other bodies with a particular interest in the environment are informed of the proposal and provided with an opportunity to comment at an early stage in the EIA process;
- Obtain baseline information regarding existing environmental site conditions;
- Establish key environmental issues and identify potential effects to be considered during the EIA;
- Identify those issues which are likely to require more detailed study and those which could be justifiably excluded from further assessment; and
- Provide a means of confirming the most appropriate methods of assessment.

SSER carried out a thorough pre-application scoping consultation exercise in December 2022, specifically on the scope of the EIAR, with statutory / non-statutory consultees and with the local community through public exhibition events and meetings with local community councils (see Appendix A – Community Consultation Log).

A scoping report was submitted to Energy Consents Unit in December 2022 and the formal Scoping Opinion was received on 23 February 2023. Scoping responses were received from the following consultees and direct liaison between Loch Lomond and the Trossachs National Park Authority and the Applicants landscape consultants was undertaken post scoping:

- Aberdeen Airport
- Balquhidder, Lochearnhead and Strathyre Community Council
- British Telecom Plc
- Defence Infrastructure Organisation
- Edinburgh Airport
- Fisheries Management Scotland
- Glasgow Airport
- Glasgow Prestwick Airport
- Highlands and Islands Airports Limited
- Historic Environment Scotland
- Joint Radio Company
- Mountaineering Scotland
- NATS Safeguarding
- NatureScot
- Office for Nuclear Regulation
- Perth and Kinross Council
- Scottish Environment Protection Agency
- Scottish Forestry
- Scottish Water
- Stirling Council
- Transport Scotland

No responses were received from the following consultees:

- British Horse Society

- Civil Aviation Authority
- Crown Estate Scotland
- John Muir Trust
- Oban Airport
- RSPB Scotland
- ScotWays
- Scottish Wildlife Trust
- Scottish Wild Land Group
- Tay District Salmon Fisheries Board
- VisitScotland
- Comrie Community Council
- Killin Community Council
- St Fillans Community Council

2.3 COMMUNITY PRE-APPLICATION CONSULTATION

The purpose of PAC as set out in Circular 3/2022 (Development Management Procedures)¹ between prospective applicants and communities is to:

‘Ensure communities can be better informed about major and national development proposals and to have an opportunity to contribute their views before a formal planning application is submitted to the planning authority. This helps to improve the quality of planning applications; address misunderstandings; to highlight any issues which are particularly important to the local community, smooth the application process itself and ultimately improve development outcomes.’

Early and open negotiations between applicants, planning authorities and other parties, such as statutory consultees, in advance of the formal application for national and major developments is promoted in Circular 3 (2022) Development Management Procedures, but is also recognised as a beneficial process to stakeholders throughout the development of the project. At paragraph 2.22 (page 12) confirms that further advice on planning community engagement activity can be found in "Planning Advice Note 3/2010: Community Engagement"².

As such, SSER is required to consult every community council whose area is within or adjoins the land on which the proposed development is situated. This may include community councils in a neighbouring planning authority. The community councils that were identified as having an interest in the Proposed Development are St Fillans Community Council within whose boundary lies the core development area, including all WTGs and the majority of site infrastructure; Balquhidder, Lochearnhead and Strathyre Community Council, in relation to site access and transport route and neighbouring Killin Community Council and Comrie Community Council (see Figure 2).

SSER has proactively reached out and engaged with local community councils, as required throughout the development and EIA process.

In undertaking the community engagement from the beginning of the project, cognisance of the advice in PAN 3/2010 has been taken into account by liaising with relevant stakeholders as to the most useful type and frequency of consultation for the community. It is recognised that within communities over the project area, different methods and timings of engagement vary to suit the needs of that community. Further

¹ <https://www.gov.scot/publications/planning-circular-3-2022-development-management-procedures/>

² <https://www.gov.scot/publications/planning-advice-note-3-2010-community-engagement/>

guidance on the practical elements of consultation and engagement with communities is taken from “Successful Planning equals Effective Engagement & Delivery” (SP=EED)³. As such, pre application emails, engagement meetings and calls were offered to understand the most appropriate method of communication for each community. A log of all local consultation activities is included in Appendix A – Community Consultation Log.

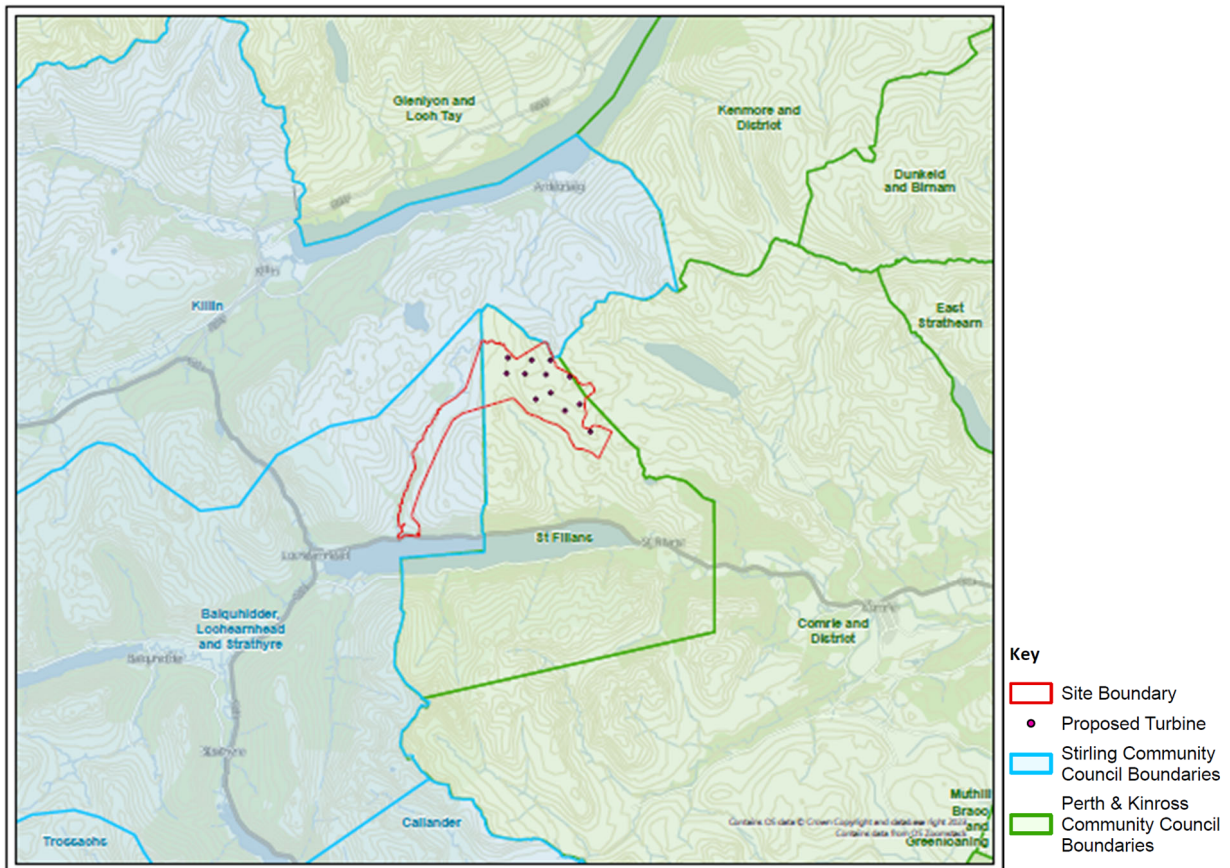


Figure 2 Community Council Boundary Areas

SSER notified St Fillans and Balquhidder, Lochearnhead and Strathyre Community Councils on 14 June 2022 of the submission of a planning application to erect a meteorological mast. Notification of the submission of the Scoping Report to the Energy Consents Unit was provided to the same Community Councils, and also Killin and Comrie Community Councils, by letter on 12 December 2022.

SSER attended a meeting of Balquhidder, Lochearnhead and Strathyre Community Council at Lochearnhead Village Hall on 5 April 2023. SSER also met with some St Fillans Community Council members via Microsoft Teams on 11 April 2023. At both meetings the proposed timescales of the project development process were discussed. The community councils were also asked to provide a preference for the location and format of public information sharing events for the project.

SSER then attended a meeting of St Fillans Community Council on 10 May 2023, following the completion of the first Public Exhibition.

³ www.pas.org.uk/speed

SSER attended a meeting with Balquhider, Lochearnhead and Strathyre Community Council on Wednesday 31 July 2024, and Killin Community Council on Tuesday 5th November 2024. Project updates were provided and informal Q&A's to allow any questions or concerns to be raised. SSER also offered to provide a presentation to Comrie Community Council on other occasions and will continue to offer engagement. Appendix A – Community consultation log includes a summary of community consultation and engagement feedback.

2.4 OTHER KEY STAKEHOLDERS

In addition to liaising with local residents and Community Councils, the project team have engaged with the local Councillors at Perth & Kinross Council (Strathearn Ward) and Stirling Council (Trossachs & Teith Ward) about the project, the plans for local engagement and subsequent S36 application submission. Local MSPs and MPs have also been updated in relation to project progress.

2.5 LOCAL STEM ENGAGEMENT

As SSER live and work in the local communities, building skills in science, technology, engineering, and maths (STEM) is recognised as a vital part of the future workforce, the supply chain and the economy. SSER provided support at a Careers Event local to the project, at McLaren High School in Callander, held on Tuesday 8 October 2024.

Three representatives from SSER attended the event, engaging with students from S1 through to S6 to share information about the proposed Glentarken project and opportunities within SSE Renewables and the wider renewables industry. A picture of the team supporting is shown in Figure 3.




Figure 3 Glentarken /SSER team members at Careers Event

2.6 PUBLIC EXHIBITIONS

Public engagement is an integral part of the project development process and under the current development management regulations, an applicant is required to hold two events for of the public where they can make comments on the proposals. The purpose of the exhibitions is to provide information to the local community and obtain feedback regarding the proposed development. On this occasion, SSER hosted three sets of public exhibitions, including in person events and online virtual events, to ensure local stakeholders and interested parties had several opportunities to engage with the project team, ask questions and provide feedback on the project proposals. The first set of public exhibitions were carried out around Scoping, the second set prior to design fix and a third set were held prior to finalisation and submission of the Section 36 application.

First Public Exhibitions - 19 and 20 April 2023

These exhibitions provided information on early activities such as the EIA process environmental assessment work, further details about SSER, relevant community investment projects from existing operational SSE sites in the area and anticipated timescales for the project development phase. Contact details were also provided in order that communities would be encouraged to make contact with the project team at any time to provide project updates or to answer any queries as and when required. The events were held in Lochearnhead Village Hall on 19 April 2023 and Sandison Hall, St Fillans, on 20 April 2023 and were advertised in the Perthshire Advertiser April 14th (see Figure 4).

NEWS
RELEASE


For immediate release: 11 April 2023

SSE Renewables to present wind farm proposals at exhibitions in Lochearnhead and St Fillans

SSE Renewables will host public exhibitions in Lochearnhead and St Fillans later this month to provide information on a proposed wind farm near the two villages.

The Perth-based green energy provider is exploring the potential to develop an onshore wind farm on land in the Drummond Estate to the north of Loch Earn.

The exhibitions will take place in Lochearnhead Village Hall, from 3-7pm on Wednesday 19 April and Sandison Hall, St Fillans, from 3-7pm on Thursday 20 April.

They will present an opportunity to talk with members of the SSE Renewables project team, view more information about the assessment process and raise any questions about the proposals.

Emma Hadden, Project Development Manager for SSE Renewables, said:

*Our assessment work on the Drummond Estate site is still in its early stages as we continue to establish the potential of this site.

*These exhibitions are the first of a number of opportunities for people who live and work in the area to find out more about what we are doing, what will happen in the coming months and how they can participate in the consultation process.

We look forward to speaking with visitors to our exhibitions and discussing our proposals in more detail.

Information about the proposal will also be published on the SSE Renewables website: www.sserenewables.com/drummond.

Ends

Wind farm meetings

SSE Renewables will host public exhibitions in Lochearnhead and St Fillans later this month to provide information on a proposed wind farm near the two villages.

The Perth-based green energy provider is “exploring the potential” to develop an onshore wind farm on land in the Drummond Estate to the north of Loch Earn.

The exhibitions will be taking place in Lochearnhead Village Hall, from 3-7pm on Wednesday, April 19 and Sandison Hall, St Fillans, from 3-7pm on Thursday, April 20.

They will present an opportunity to talk with members of the SSE

Renewables project team, view more information about the assessment process and raise any questions about the proposals.

Emma Hadden, Project Development Manager for SSE Renewables, said: “Our assessment work on the Drummond Estate site is still in its early stages as we continue to establish the potential of this site.

“These exhibitions are the first of a number of opportunities for people who live and work in the area to find out more about what we are doing, what will happen in the coming months and how they can participate in the consultation process.”

Copy within the Perthshire Advertiser on 14 April 2023

Please contact Alan Greenwood for more information:

Email: Alan.Greenwood@sse.com

Mobile: 07342 142714

Figure 4 Press Release

Notification of the events was sent to the community councils of St Fillans, Balquhiddier, Lochearnhead and Strathyre, Comrie and Killin. A poster advertising the event was displayed in public notice boards in Lochearnhead and St Fillans (See Figure 5).



Figure 5 Exhibition Poster and Mail shot letter

A letter (See Figure 5) was sent to 625 households and businesses in the St Fillans and Balquhiddier, Lochearnhead and Strathyre Community Council areas on 5 April 2023 providing details about the exhibitions and contact details for the Stakeholder Engagement Manager who is part of the project team. Figure 6 shows the boundary map which was used to identify the properties within reasonable distance to the site and thereby issue communications, which may be of local interest.

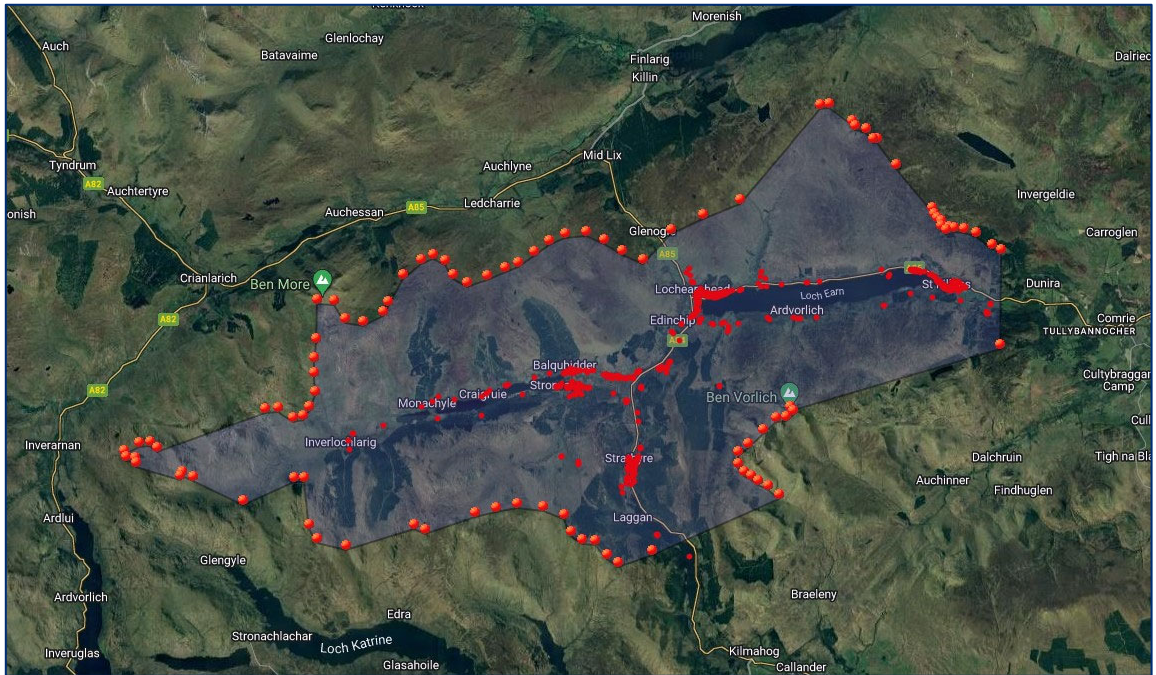


Figure 6 Boundary Map

Lochearnhead Village Hall

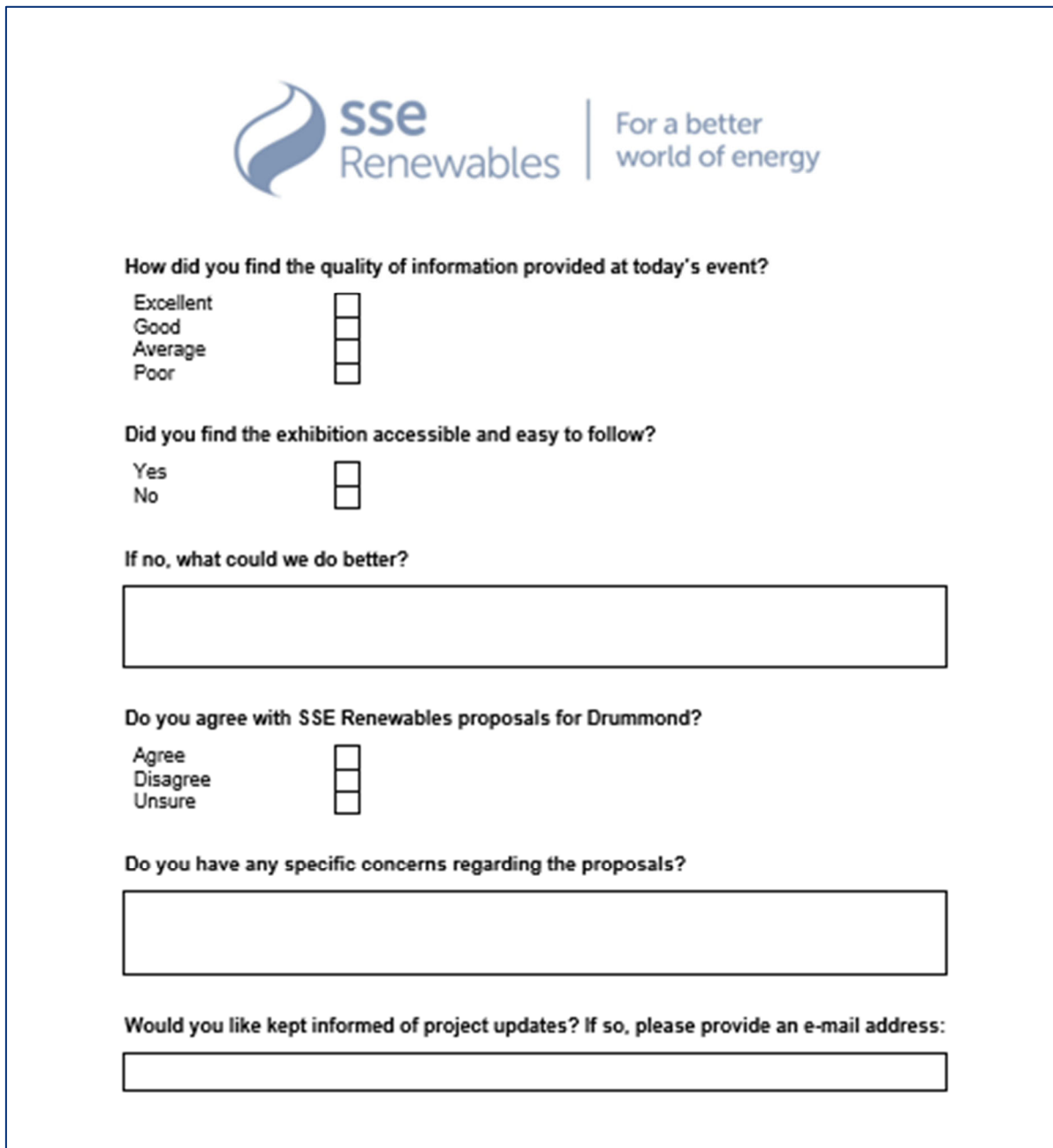


Sandison Hall, St Fillans



Figure 7 First Public Exhibitions

The exhibitions were attended by members of the SSER project team and information boards provided early-stage details on site location, site layout, environmental information, anticipated transport route and other detail on the project. 113 people attended the in-person exhibitions across the two days and were invited to complete a feedback form to gauge the usefulness of the event and express opinions or ask questions about the Proposed Development (see Figure 8). A breakdown of the key points raised is included in Figure 9 and exhibition materials are included in Appendix B.



The image shows a feedback form for SSE Renewables. At the top, the SSE Renewables logo and tagline 'For a better world of energy' are displayed. The form contains several questions with corresponding response options and input fields:

- How did you find the quality of information provided at today's event?**
Options: Excellent, Good, Average, Poor. Each option has a corresponding empty checkbox.
- Did you find the exhibition accessible and easy to follow?**
Options: Yes, No. Each option has a corresponding empty checkbox.
- If no, what could we do better?**
A large empty text box for providing feedback.
- Do you agree with SSE Renewables proposals for Drummond?**
Options: Agree, Disagree, Unsure. Each option has a corresponding empty checkbox.
- Do you have any specific concerns regarding the proposals?**
A large empty text box for providing concerns.
- Would you like kept informed of project updates? If so, please provide an e-mail address:**
An empty text box for providing an email address.

Figure 8 First exhibition feedback form

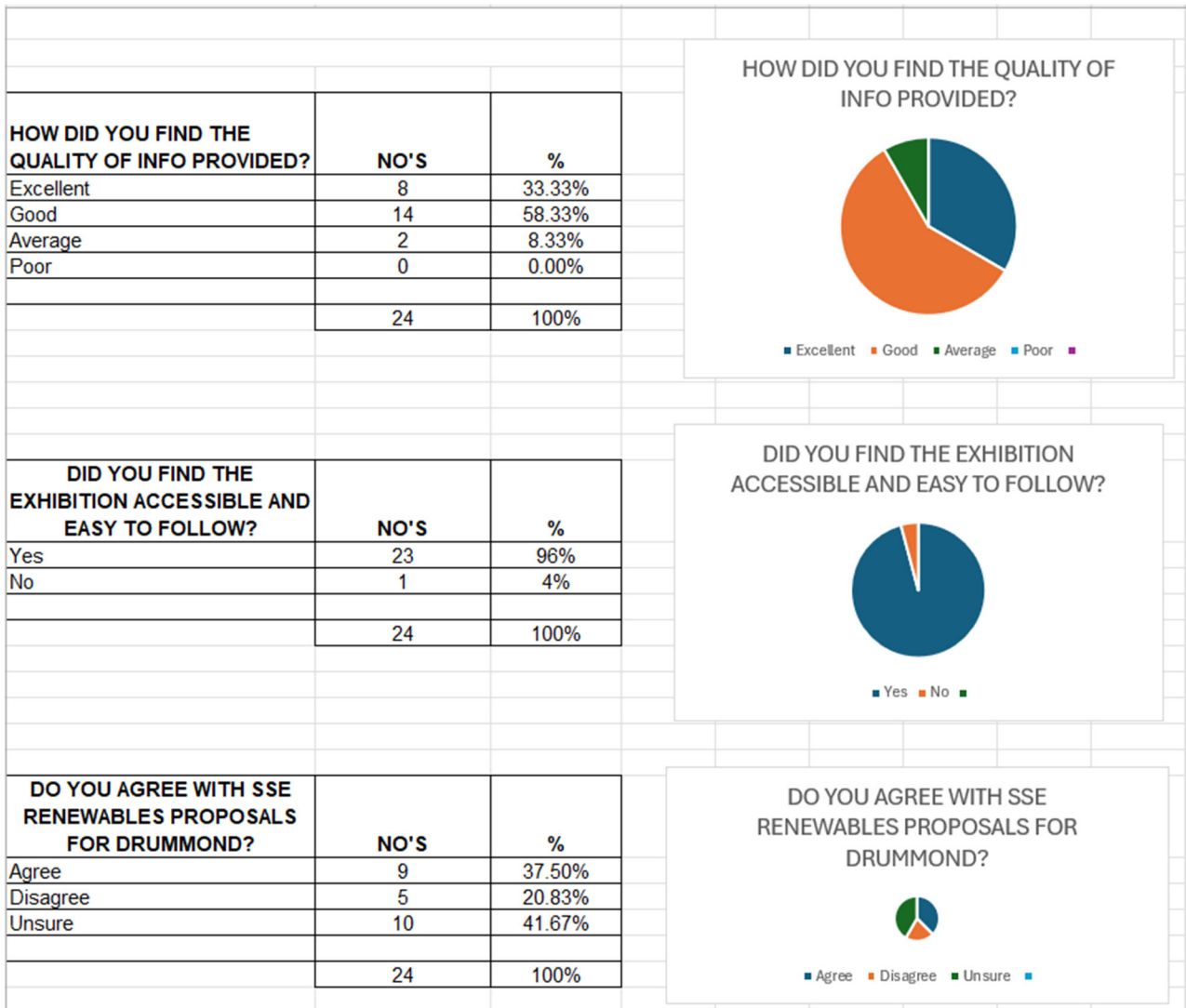


Figure 9 First exhibition feedback summary

Virtual Public Exhibition – 2 and 4 May 2023

To ensure information on the project proposals were made available to reach as wide an audience as possible, an online public exhibition was held. The virtual exhibition was hosted via an on-line platform, in the format of a 'virtual room'. The information which was previously presented on exhibition boards and posters at the locally held events were displayed in a similar manner in the virtual room, with links to take the viewer to more detailed information and plans (see Figure 10).

Virtual welcome area



Virtual exhibition boards

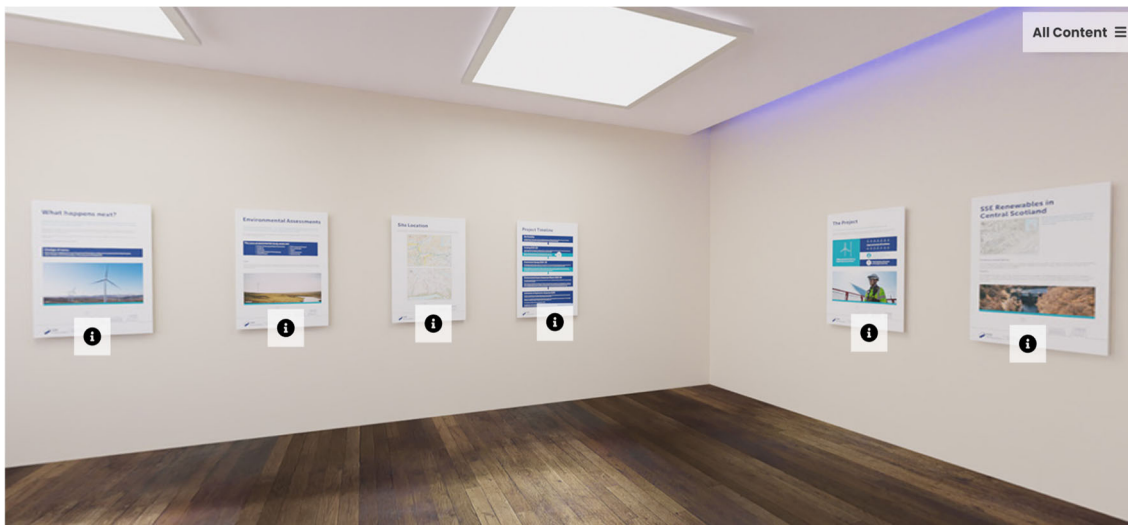
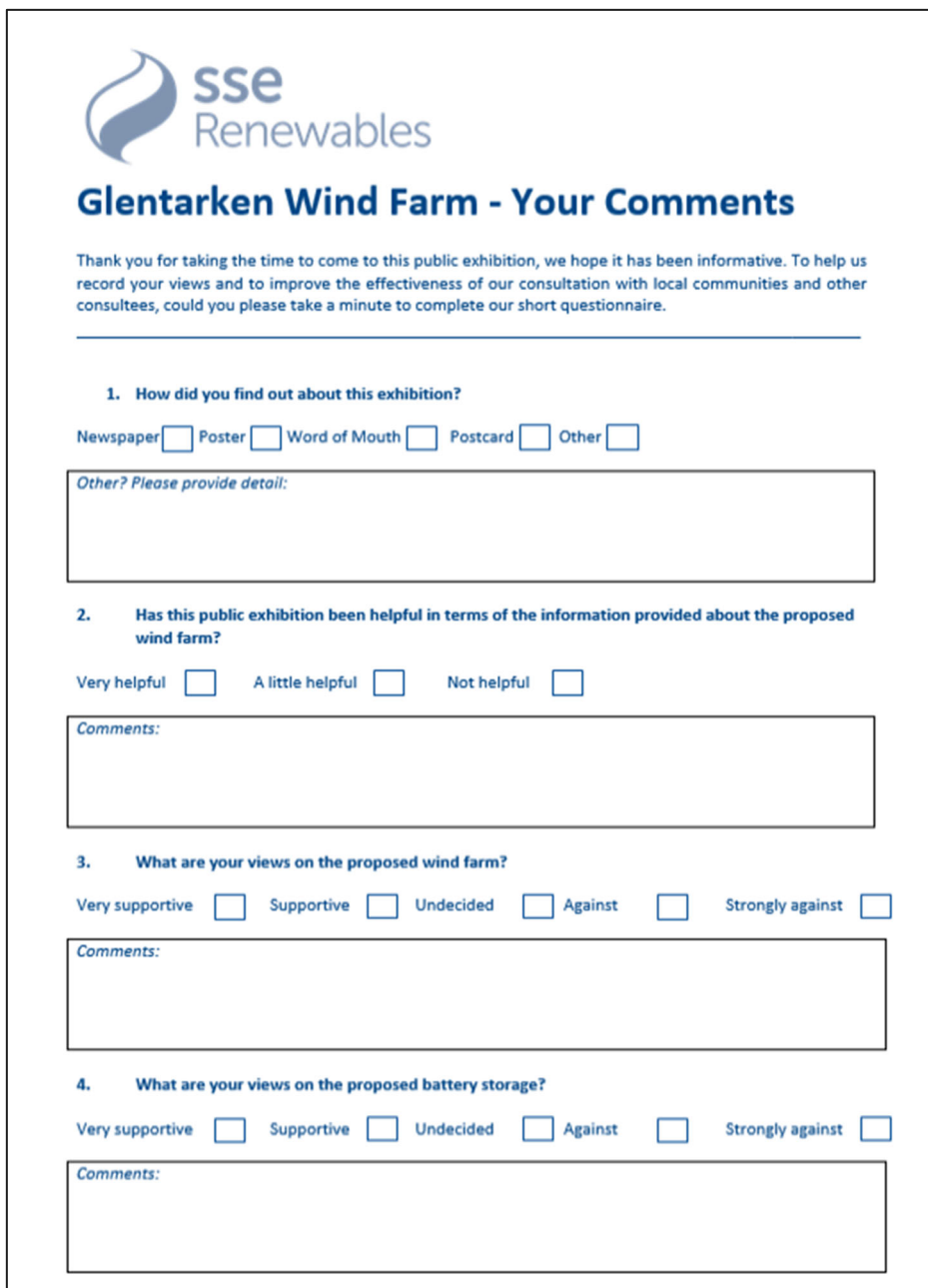


Figure 10 Screenshots from virtual exhibition

During the virtual exhibition, live Question and Answer (Q&A) sessions were available on 2 May 2023 between 1300 and 1500 hrs and 4 May 2023 between 1400 and 1600 hrs. During the live Q&A sessions members of the project team were available to answer any queries from website visitors as they arose. Other opportunities to leave feedback on the exhibition were also available via an on-line feedback form at the virtual front desk or via messenger direct link to the community engagement and stakeholder email address. The virtual exhibition was visited 117 times by 48 unique users.

Second Public Exhibition – 28 and 29 May 2024

The second set of exhibitions were held on Tuesday 28th and Wednesday 29th May 2024 and the information presented was aligned to the format of the first exhibitions for consistency and clarity around project progress. Information boards included details on the design iteration phases, showing how the layout had been shaped through environmental constraints, engagement with local communities and other key stakeholders. This led to a 16-turbine layout with the potential for Battery Energy Storage, optimising the available grid connection capacity of 104 MW. Initial visualisations from local areas of interest were also shared. A summary of the exhibition boards was compiled into brochures which were provided for visitors to take away and feedback forms were available for attendees to complete if desired, to provide feedback or ask questions (see Figure 11). Exhibition materials are included in Appendix C.



The form is titled "Glentarken Wind Farm - Your Comments" and includes the SSE Renewables logo. It contains four numbered sections with checkboxes and text input fields.

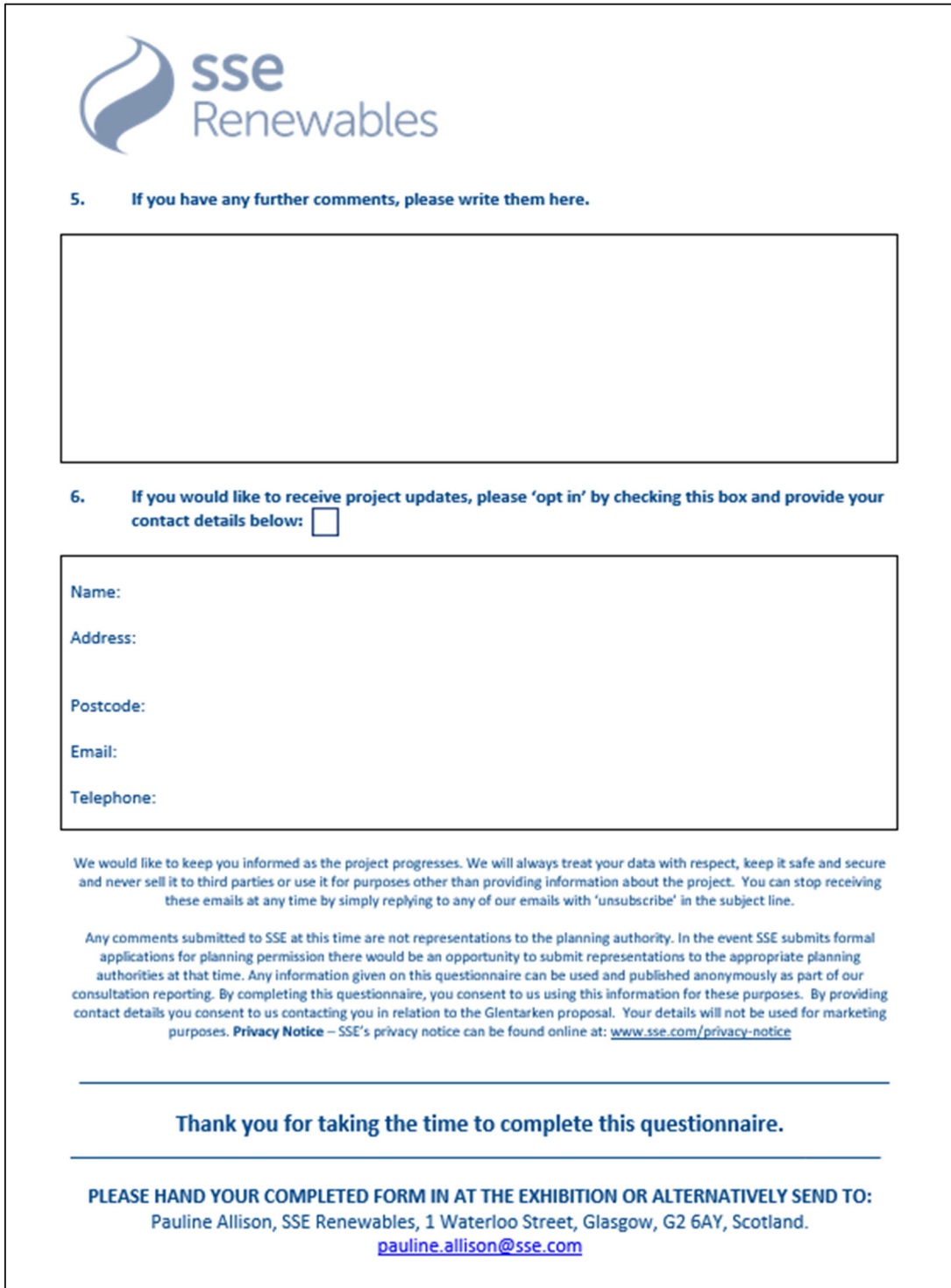
1. How did you find out about this exhibition?
 Newspaper Poster Word of Mouth Postcard Other
 Other? Please provide detail:


2. Has this public exhibition been helpful in terms of the information provided about the proposed wind farm?
 Very helpful A little helpful Not helpful
 Comments:

3. What are your views on the proposed wind farm?
 Very supportive Supportive Undecided Against Strongly against
 Comments:

4. What are your views on the proposed battery storage?
 Very supportive Supportive Undecided Against Strongly against
 Comments:

Figure 11 Exhibition comments form – page 1





5. If you have any further comments, please write them here.

6. If you would like to receive project updates, please 'opt in' by checking this box and provide your contact details below:

Name:

Address:

Postcode:

Email:

Telephone:

We would like to keep you informed as the project progresses. We will always treat your data with respect, keep it safe and secure and never sell it to third parties or use it for purposes other than providing information about the project. You can stop receiving these emails at any time by simply replying to any of our emails with 'unsubscribe' in the subject line.

Any comments submitted to SSE at this time are not representations to the planning authority. In the event SSE submits formal applications for planning permission there would be an opportunity to submit representations to the appropriate planning authorities at that time. Any information given on this questionnaire can be used and published anonymously as part of our consultation reporting. By completing this questionnaire, you consent to us using this information for these purposes. By providing contact details you consent to us contacting you in relation to the Glentarken proposal. Your details will not be used for marketing purposes. **Privacy Notice** – SSE's privacy notice can be found online at: www.sse.com/privacy-notice

Thank you for taking the time to complete this questionnaire.

PLEASE HAND YOUR COMPLETED FORM IN AT THE EXHIBITION OR ALTERNATIVELY SEND TO:
Pauline Allison, SSE Renewables, 1 Waterloo Street, Glasgow, G2 6AY, Scotland.
pauline.allison@sse.com

Figure 11 Exhibition comments form – page 2

Notification emails were sent to St Fillans, Balquhider, Lochearnhead and Strathyre, Comrie and Killin community councils in May 2024. A quarter page newspaper advert was published in the Courier newspaper and posters were displayed in Lochearnhead and St Fillans (see Figure 12). Postcards were also issued to c.450 local residential properties and businesses located within a 5km radius of the proposed Glentarken site (see Figure 13). Local Councillors, MP's, MSP's and communities were also informed (see Appendix A – Community consultation log).



'GREAT LOSS' Floral tributes have been laid outside St Mary Magdalene's Church after the death of Father Bogdan Palika.

Flowers laid for 'popular' Perth priest

BY CHLOE BURRELL AND NEIL HENDERSON

Floral tributes have been laid outside a Perth church where a "very popular" priest was found dead.

Father Bogdan Palika's body was discovered inside St Mary Magdalene's Church, where he worked, on Saturday afternoon.

Police launched a probe into the death of the 60-year-old - initially treating it as unexplained - and sealed off the church on Glenearn Road.

They have since confirmed there are no suspicious circumstances surrounding the death.

Bunches of flowers and candles have been placed at the entrance to the church in memory of Fr Palika, who had worked in Perth for a decade.

One Glenearn Road resident told The Courier police descended on the church at around 2pm on Saturday.

She said: "It was very worrying to see so many police and a church is the last place you would expect to see taped off."

"I saw police officers going in and out of the church all of Saturday and Sunday."

"It's tragic to hear the

priest has died there. I don't attend the church myself but my heart goes out to all those that do, as well as to the priest and those that knew him."

Another resident said: "It's just such sad news to hear there has been a death at the church."

"People here were understandably very anxious to know what and how it had happened."

"For two days, it has looked very much like a potential crime scene."

The Rev Krzysztof Jablonski, permanent deacon at the church, said Fr Palika's death had left him "lost for words" and that he had been "very popular" with his congregation.

Fr Palika moved to St Mary Magdalene's Church from St John the Baptist Church in July 2022.

A spokesman for the Diocese of Dunkeld paid tribute to Fr Palika yesterday.

He said: "On behalf of Canon Kevin Golden, and the priests and the people of the Diocese of Dunkeld, our heartfelt prayers and sympathy go out to his family."

"Especially to his sister,

Elzbieta, in Poland, as well as to the members of the Society of the Divine Saviour (SDS) whose missionary priests, like Fr Bogdan, do great work around the world."

"To his parishioners at St Mary Magdalene's Church in Perth, in particular Deacon Krzysztof Jablonski and the Polish community who worked so closely with him, we share their great loss and join with them as they pray for the repose of his soul."

"Fr Bogdan was called to serve in Perth in 2014, a community with strong traditional ties to his homeland."

"Prior to coming to Scotland, he had carried out mission work in Europe and in the USA."

A Police Scotland spokesman said: "Officers were called to an address in Glenearn Road, Perth, at around 2.30pm on Saturday following the sudden death of a 60-year-old man."

"Inquiries have been carried out and there are no suspicious circumstances."

"A report will be submitted to the procurator fiscal."

Mum 'cried happy tears' as fans and players paid tribute to Stuart

A Dundee mum says she cried "happy tears" after players and fans twice paid tribute to her late son.

Dundee FC fan Stuart Gauld, aged nine, died last Monday after falling unwell with a mystery illness.

Mum Toni Hunt was at the club's game against Kilmarnock on Saturday, where two tributes were paid to the youngster.

Players from both clubs gathered in the centre circle ahead of kick-off for a minute's applause, and then the game stopped during the ninth minute for a further period of clapping.

Fans praised players from both teams who paused to take part in the applause, along with referee Calum Scott.

Toni, from Whitfield, said it was an emotional day. She said: "It was such a great thing they did. It was very emotional but it was happy tears. Stuart



Dundee players, right, applaud for fan Stuart Gauld, left, at the game against Kilmarnock.

would have been over the moon with it."

One poster on X shared a clip of the ninth-minute tribute and said: "I knew the fans on both sides would applaud in the ninth minute, but for both teams and the referee to stop and pay respect is something else."

Others responded to praise the actions of those on and off the pitch. One

wrote: "A touch of class, that, from players, fans and officials."

Another posted: "Massive respect to everyone who (did) the minute's applause."

The Rowantree Primary School pupil died in his mum's arms, just over a fortnight after he became unwell.

The cause of his death is still not known.

sse Renewables

Public Exhibition

Glentarken Wind Farm

SSE Renewables invites you along to a public exhibition to view proposals for Glentarken Wind Farm and share your feedback. Exhibitions will be held at:

Tuesday 28th May 2.00pm - 7.00pm

Sandison Hall, St Fillans, Crieff, PH6 2NA

Wednesday 29th May 2.00pm - 7.00pm

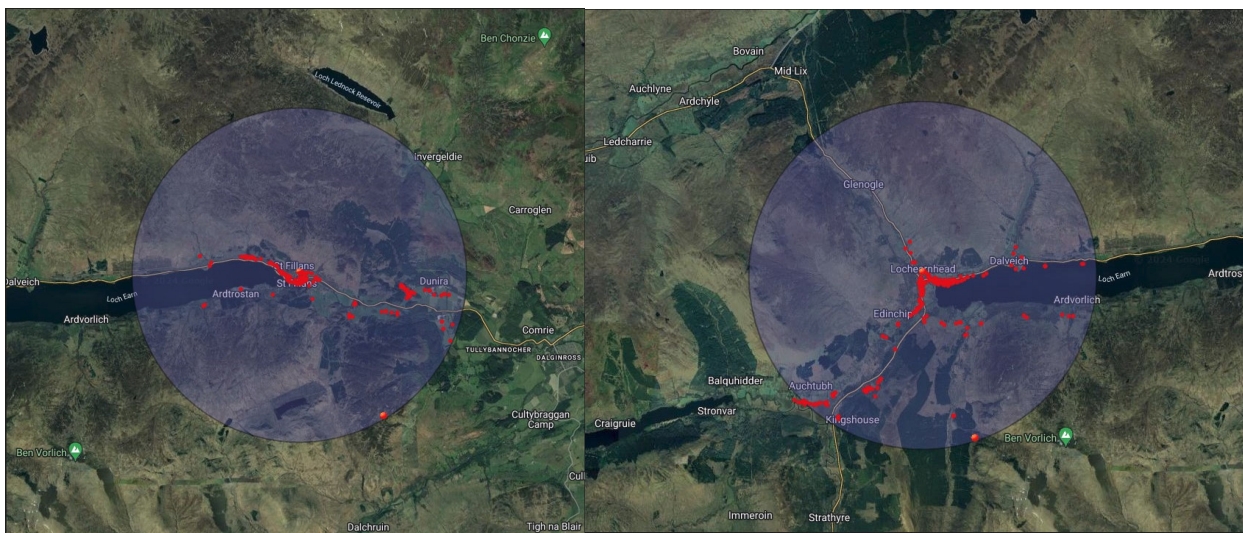
Lochearnhead Hall, Auchraw Terrace, Lochearnhead, FK19 8PR

saserenewables.com/glentarken

Figure 12 Exhibition advert in Courier Newspaper featuring poster



Figure 13 Mail drop postcard and postal boundaries



St Fillans - 5km postal boundary

Lochearnhead - 5km postal boundary

The exhibitions were well attended with approximately 45-50 visitors at St Fillans and 20 – 25 visitors at Lochearnhead. 27 Feedback Forms were submitted to the project following the public exhibitions and responses were provided by email where visitors required more information or asked specific questions (see Figure 13). A high level summary of the feedback provided from the exhibition visitors is shown in Figure 14.

St Fillans - 28/05 - 45 - 50 attendees
 Lochearnhead - 29/05 - 20 - 25 attendees
 Live Session - 12/06 - c.3 attendees

HOW DID YOU FIND OUT ABOUT THIS EXHIBITION?	NO'S	%
Newspaper	0	0.00%
Poster	2	7.14%
Word of Mouth	6	21.43%
Postcard	11	39.29%
Other	9	32.14%
	28	100%



HAS THE EXHIBITION BEEN HELPFUL?	NO'S	%
Very helpful	23	82%
Helpful	5	18%
Not helpful	0	0%
	28	100%



WHAT ARE YOUR VIEWS ON THE PROPOSED WIND FARM?	NO'S	%
Very supportive	11	38%
Supportive	8	28%
Undecided	7	24%
Against	3	10%
Strongly against	0	0%
	29	100%



WHAT ARE YOUR VIEWS ON THE PROPOSED BATTERY STORAGE?	NO'S	%
Very supportive	11	40.74%
Supportive	11	40.74%
Undecided	5	18.52%
Against	0	
Strongly against	0	
	27	100%

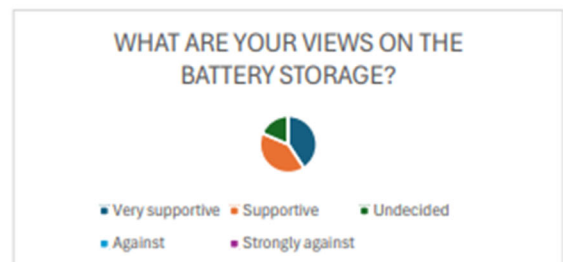


Figure 14 Summary of second exhibition feedback

Sandison Hall, St Fillans

Lochearnhead Village Hall



Figure 15 Second Public exhibitions

Virtual Public Exhibition – 12 June 2024

In line with the first exhibitions, the local in-person events were followed by a Virtual Exhibition on Wednesday 12th June 2024 which ran from 5pm – 7pm and reflected the materials presented in the local events. The virtual exhibition was visited 41 times over a three day period, see Figure 15a.

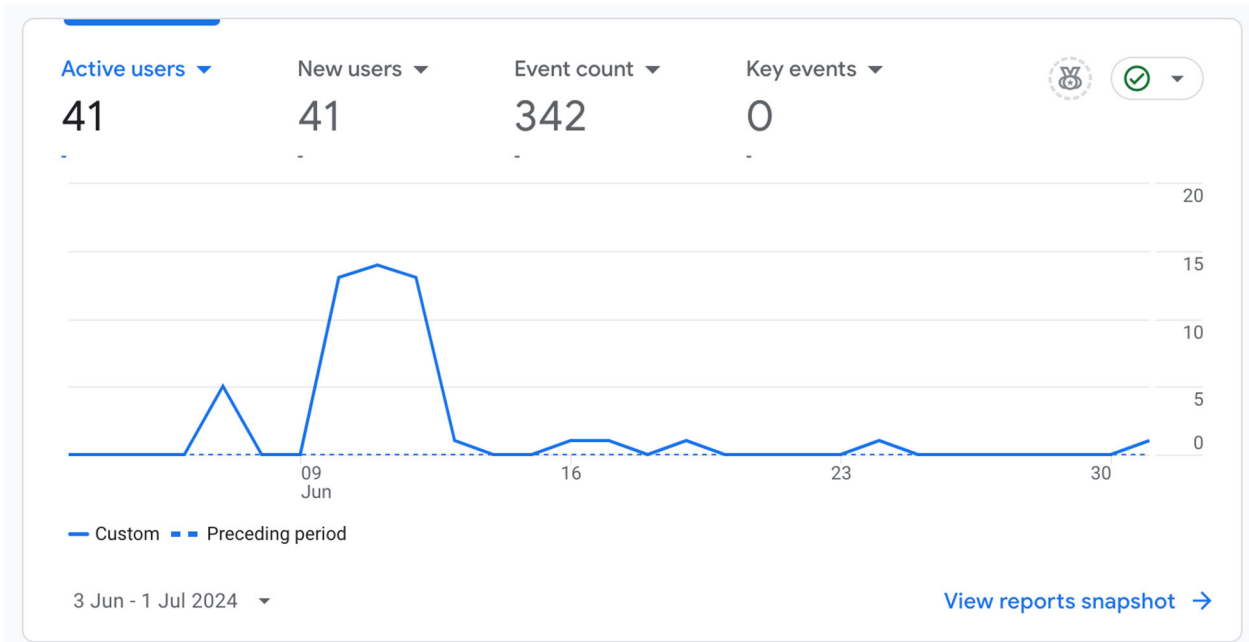


Figure 15a Statistics from second virtual exhibitions

Third Public Exhibitions – 19 and 20 November 2024

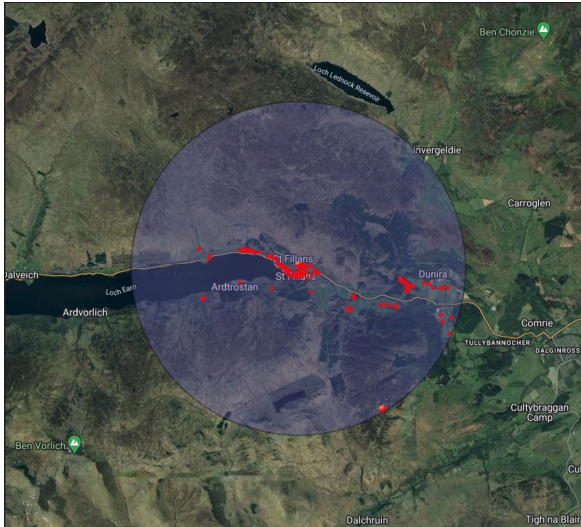
A third set of exhibitions were held on Tuesday 19 and Wednesday 20 November 2024 ahead of submission of the S36 application to the ECU. The exhibitions presented the design fix layout which includes 12 WTGs at 180 m tip height, Battery Storage and other ancillary infrastructure such as tracks, borrow pits, a substation, operational facilities, compounds and laydown areas. The information boards also set out key environmental findings from the EIA process, how the site design has carefully considered all these elements and how SSER’s environmental commitments aim to ensure climate and biodiversity crisis are being managed simultaneously throughout the lifetime of the project.

In the interests of sustainability, brochures were also made available for visitors to download from the project website and feedback forms were available for attendees to complete if desired, to provide feedback or ask questions (see Figure 11). Exhibition materials are included in Appendix D.

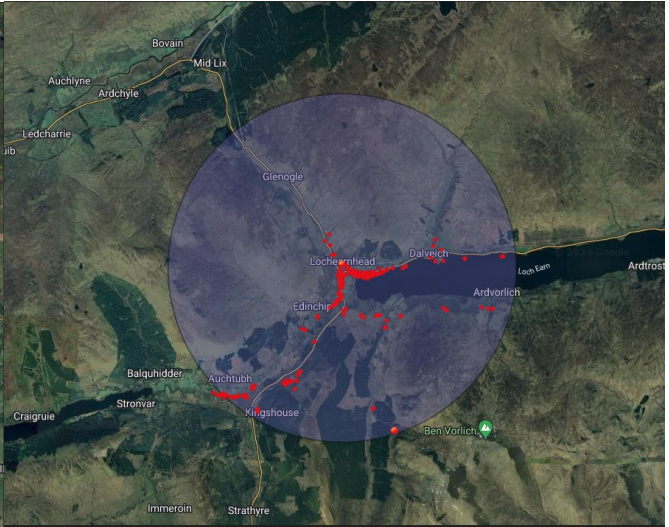
Notification emails were sent to St Fillans, Balquhider, Lochearnhead and Strathyre, Comrie and Killin community councils in October 2024 (see appendix A – Community Consultation Log). Postcards were also issued to c.450 local residential properties and businesses (see Figure 16) and a quarter page newspaper advert featuring the poster was published in the Courier newspaper in November (see Figure 17). Posters were displayed in Lochearnhead and St Fillans and emailed to previous exhibition attendees who had requested to be kept up to date with progress. Local Councillors, MPs, MSPs and communities were also informed (see appendix A – Community Consultation Log).



Figure 16 Mail drop postcard and postal boundaries



St Fillans - 5km postal boundary



Lochearnhead – 5km postal boundary

8 NEWS
THE COURIER & ADVERTISER
Monday, November 11, 2024

Drivers warned of convoy system during overnight A90 roadworks



The stretch of the A90 between Forfar and Brechin will be affected by the work.

A convoy system will be in operation during overnight roadworks on the A90 between Forfar and Brechin. Road safety improvement works will take place from today until Wednesday November 20. The £240,000 scheme includes road marking and stud refreshing on the stretch of road from B9128 to just before the St Anns junction. Work will take place weeknights between 7.30pm and 6.30am. Convoys will be in place to ensure the safety of roadworkers and motorists. Junctions and access may also have temporary traffic management in place while work is being carried out. Ames, which is carrying out the work on behalf of Transport Scotland, says the upgrades will benefit 21,000 road users daily. It comes as drivers continue to face delays on the A90 near Glencairn.



SPELLING IT OUT: Unison members get their message across on a Perth picket line.

Union claims council tried to stoke fury

BY JUSTIN BOWIE

Perth Union bosses are demanding an investigation after accusing the council of deliberately trying to stir up anger against the controversial school strikes. The trade union, heavily criticised over the walkout, has launched an official complaint over the local authority's social media strategy. Unison says the council should not have posted "politically motivated" quotes by SNP council chief Grant Laing about the pay dispute. In a letter obtained by The Courier, the trade union claims the council was culpable for failing to remove "outrageous abusive comments" on social media. Unison says the local authority posted staff salary details which gave a "false impression" of what some employees were earning. The trade union is also they noted that it was at Unison's request. "Our members believe all of the above were deliberate actions to create negativity towards those taking action and left them open to hate speech," the letter reads. Council chief Mr Laing said he had no plans to become embroiled in an argument with the union when contacted for comment. Schools across Perth and Kinross closed for two weeks on October 21 after school support staff took industrial action. The move was highly criticised for targeting First Minister John Swinney's constituency. Two other trade unions, Unite and GMB, had already agreed to a pay deal. Mr Swinney said there was "no justification" for the strike and said his own son was among pupils being "singled out". Sources say the SNP leader was furious at the targeted industrial action. We revealed how Unison was accused of using striking support staff to boost the salaries of well-paid council managers. It was feared another strike would soon follow but on Friday, Unison agreed to a deal with the Scottish Government and Conia. Insiders say the agreement was a chance for Unison to back down to stem further anger. Perth and Kinross Council has detailed guidelines for social media usage. Employees are expected to represent the local authority in a "positive



Public Exhibition
Glenstarken Wind Farm

SSE Renewables invites you to join us at one of our public exhibitions to view our final design proposals for Glenstarken Wind Farm and share your feedback on our design. These exhibitions are ahead of our application submission to the Energy Consents Unit (ECU).

Exhibition Information	
Tuesday 19th November 2.00pm - 6.30pm Sandison Hall, St Fillans, CR81T, PH6 2NA	Wednesday 20th November 4.00pm - 7.00pm Lochearnhead Hall, Auchraw Terrace, Lochearnhead, FK19 8PR
Thursday 28 November 5.00pm - 7.00pm Virtual exhibition You can access the virtual exhibition space via: sse renewables.com/Glenstarken	

If you would like to speak to someone about the Glenstarken Wind Farm proposals you can also contact:
Pauline Allison, our Stakeholder Engagement Manager, any time at pauline.allison@sse.com

Figure 17 Exhibition advert in Courier Newspaper featuring poster

The exhibitions were well attended with around 30 attendees at St Fillans and around 20 attendees at Lochearnhead. Feedback Forms were submitted to the project and a summary of the key findings shown in Figure 18.

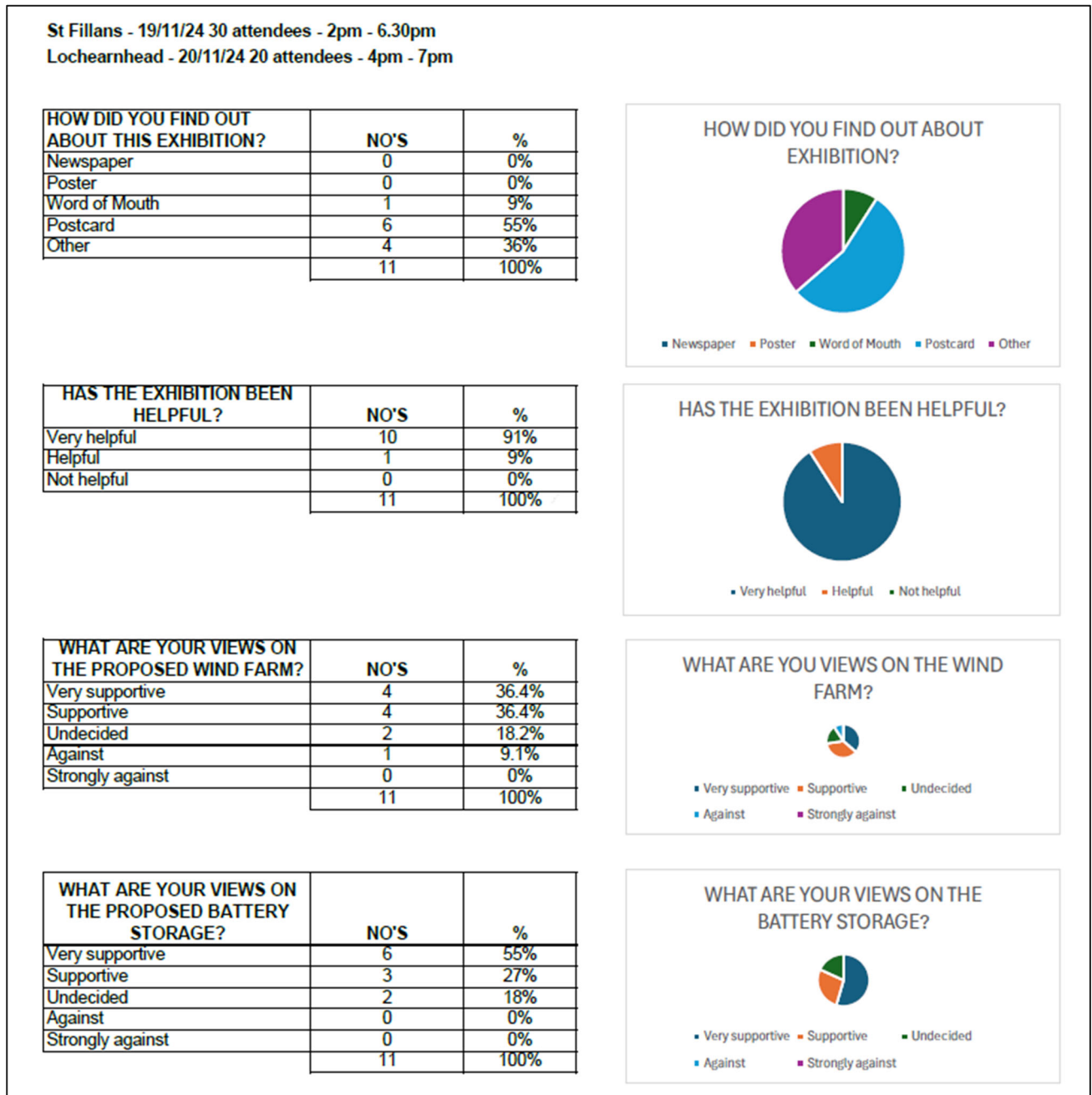


Figure 18 Summary of third exhibition feedback

St Fillans – Sandison Hall



Lochearnhead Village Hall



Figure 19 Third public exhibitions

Virtual Public Exhibition – 28 November 2024

In line with the previous exhibitions, the live events were followed by a Virtual Exhibition on Thursday 28 November 2024 with a live question and answer session with members of the project team from 5pm – 7pm and reflected the materials presented in the live events. The virtual exhibition was visited 38 times over a period of 5 days, with 32 being new visitors, see Figure 20a.

Virtual welcome area



Virtual Exhibition Boards



Figure 20 Screenshots from virtual exhibition

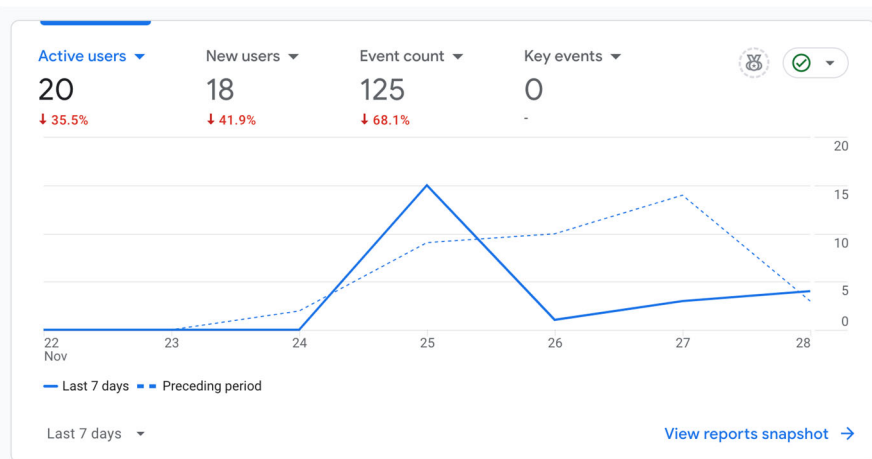


Figure 20a Statistics from second virtual exhibitions

3 SUMMARY AND CONCLUSION

The consultation activities carried out for the Proposed Development during the development phase of the project took different forms and used various methods to reach as broad an audience as possible. This approach was intended to ensure that those who wished to receive information regarding the project, received it in an accessible and useful format. The early phase of consultation was tailored to seek engagement and obtain feedback on the project as it was developed and designed, whether that feedback was negative or positive. Critical to a successful engagement process was two-way feedback, in that those engaging and offering an opinion were responded to. Where required, further explanation or justification was also provided regarding how matters that were raised were being addressed. A simple example would be the re-naming of the development in May 2023, from Drummond Wind Farm to Glentarken Wind Farm. Following feedback from local stakeholders and in agreement with landowners, the name was changed to more accurately convey the location of the proposed site within the Drummond Estate.

SSER has proactively engaged with a wide range of local stakeholders, residents and community councils prior to the submission of the Section 36 application for the Proposed Development. The community consultation log includes a summary of communications that have taken place as the project has progressed, the views raised, and responses provided (see Appendix A).

Building local relationships is key to building trust and to ensuring that residents and all interested parties feel informed and involved. It is also helpful to provide details on who to contact if they have any queries or concerns. Good relationships are critical to the project team and vital to the success of the project. Making sure neighbouring communities know who SSER is and the commitment to be a good neighbour, not just through the development of a project, but also throughout construction and the operational lifetime of a project, is key. Being able to share real life case studies through site visits to one of SSER's local operational sites, Griffin Wind Farm, has also been felt to be helpful to visitors in building a better understanding of the proposed Glentarken Wind Farm.

Consultation and engagement is an ongoing and evolving process and SSER recognises the importance of working with communities from project inception, through the development and operational phases of projects. This ongoing engagement ensures that within more remote and rural areas in particular, communities are not adversely impacted but are supported and often enhanced through renewables development. It is considered that the pre-application consultation and ongoing engagement on the proposed Glentarken Wind Farm project has demonstrated this committed approach to engagement throughout this report. SSER consider this is also reflected in positive feedback received at public consultation events, at Community Council meetings and general local engagement.

In terms of the submission of the Section 36 application to the ECU, SSER have outlined this process and how communities can engage with the statutory consenting process and continue to have their representations considered.

SSER will continue to work with local communities, engage and update stakeholders and interested parties as the proposals progress, to address any concerns raised and provide further information or advice as required.