

Key

- Proposed Turbines
- ⊙ Viewpoint
- ⊙ Wireline Only Viewpoint
- Site Boundary
- 5km Radii
- 20km Detailed LVIA Study Area
- 45km Study Area

Hub Height Zone of Theoretical Visibility (ZTV) Bare Earth

No of Hubs Theoretically Visible

- 1-3
- 4-6
- 7-9
- 10-12

This Zone of Theoretical Visibility (ZTV) has been generated using ESRI ArcGIS Spatial Analyst extension using the assumptions detailed in the infobox below. The digital terrain model (DTM) has the following accuracy: OS Terrain 5 dataset (+/-2 m) up to 20km from turbine locations, OS Terrain 50 dataset (+/-10 m). The ZTV view height of 2 m above ground level is recommended by "Visual Representation of Windfarms" by NatureScot February 2017 - Version 2.2. The ZTV is generated from a bare earth terrain and does not account for the screening effect of features within the landscape such as settlements and woodland. The ZTV shows potential theoretical visibility only and is for informing 'on the ground' visual assessment.

Hub height:	99m	Observer height:	2m
DTM:	OS Terrain 50	Surface features:	Excluded
DTM resolution:	50m	Earth curvature:	Included

Scale 1:350,000 @ A3

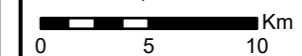
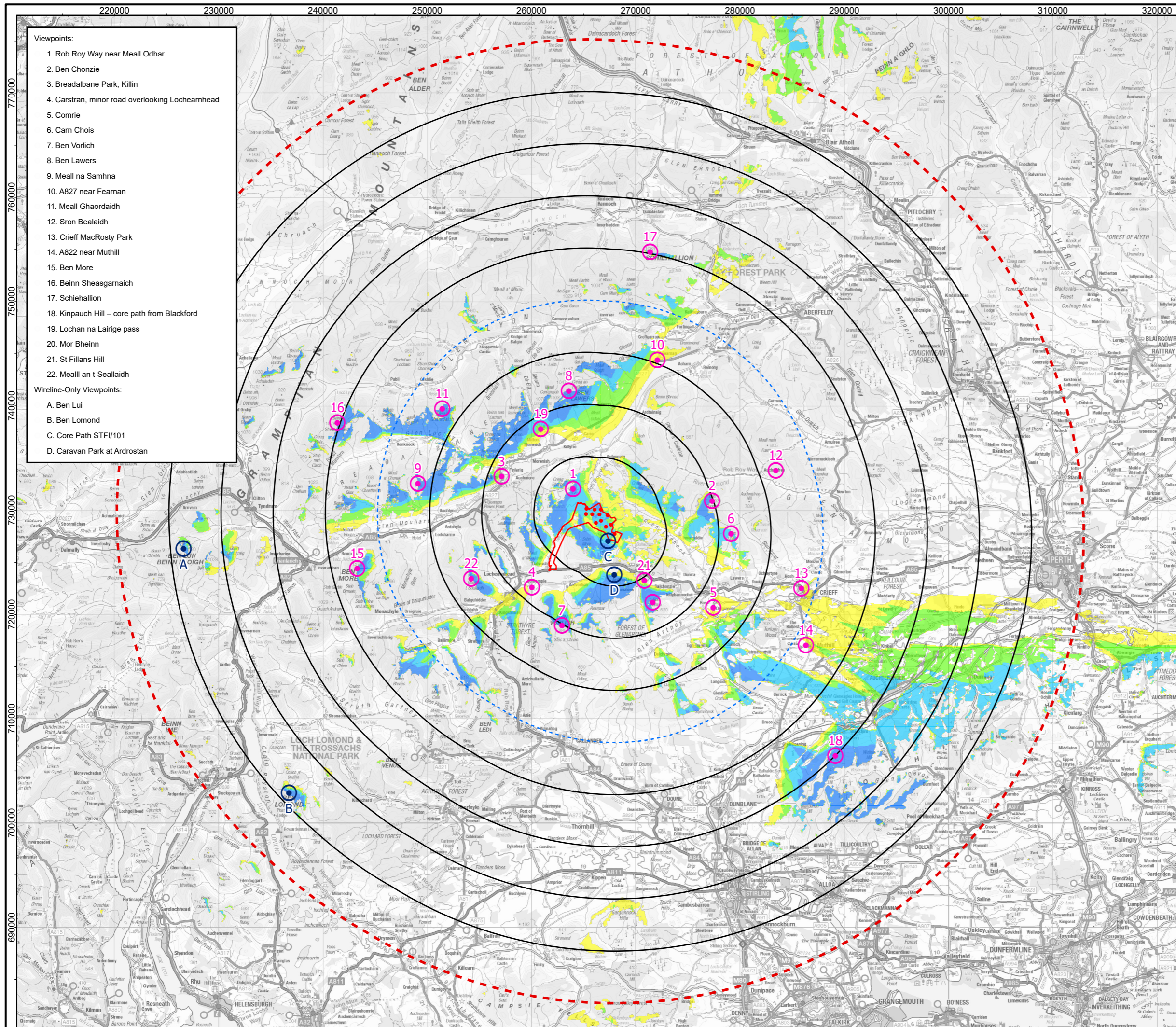


Figure 5.8a

Hub height ZTV with viewpoints (A3)

**Glentarken Wind Farm
EIAR 2024**



- Viewpoints:**
1. Rob Roy Way near Meall Odhar
 2. Ben Chonzie
 3. Breadalbane Park, Killin
 4. Carstran, minor road overlooking Lochearnhead
 5. Comrie
 6. Carn Chois
 7. Ben Vorlich
 8. Ben Lawers
 9. Meall na Samhna
 10. A827 near Fearnan
 11. Meall Ghaordaidh
 12. Sron Bealaidh
 13. Crieff MacRosty Park
 14. A822 near Muthill
 15. Ben More
 16. Beinn Sheasgarnaich
 17. Schiehallion
 18. Kinpauch Hill – core path from Blackford
 19. Lochan na Lairige pass
 20. Mor Bheinn
 21. St Fillans Hill
 22. Meall an t-Seallaidh
- Wireline-Only Viewpoints:**
- A. Ben Lui
 - B. Ben Lomond
 - C. Core Path STF1/101
 - D. Caravan Park at Ardrostan