

# **Appendix 14.3: Sloy Pumped Hydro Storage Scheme: Baseline Data Analysis**

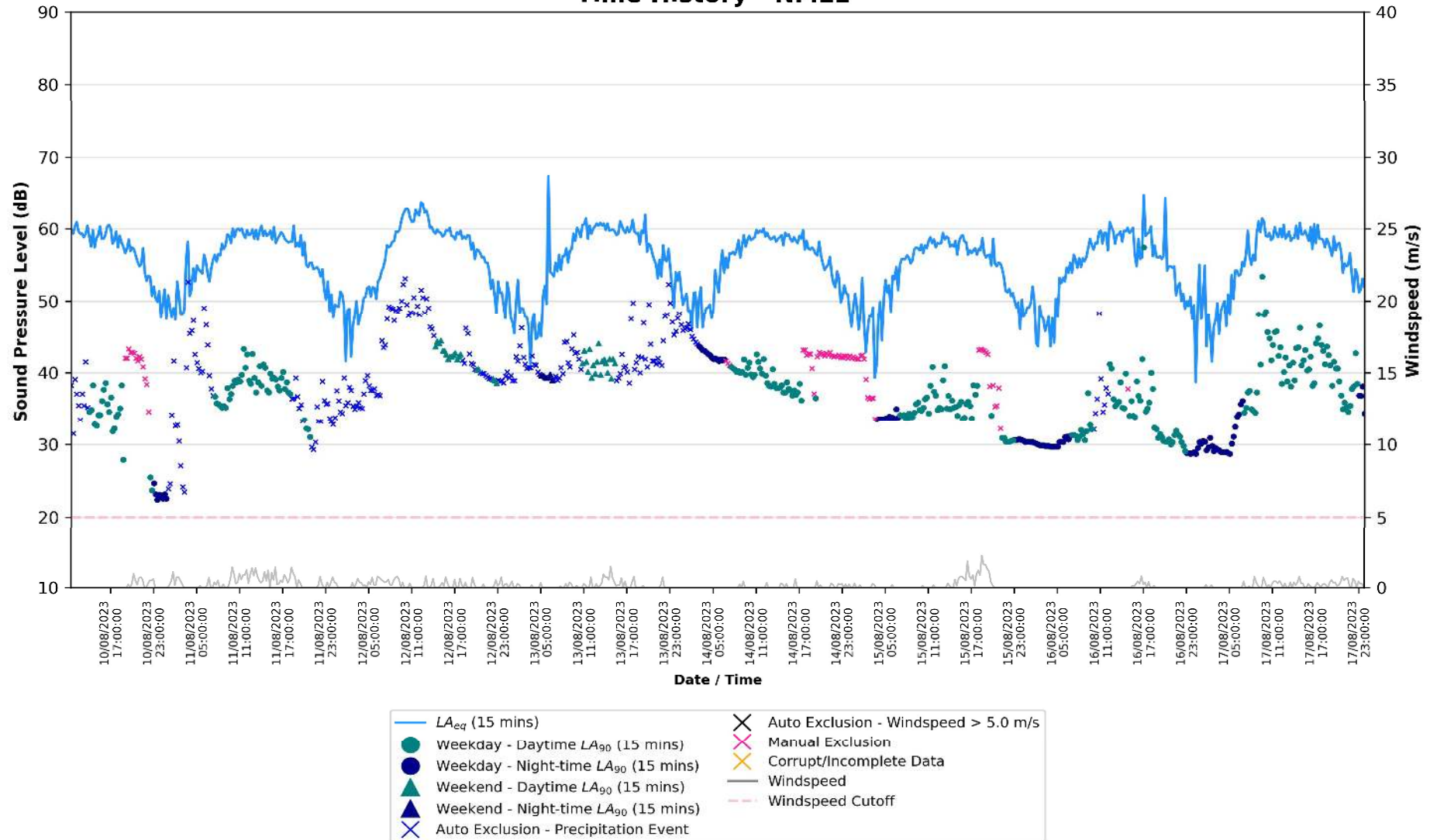
# Appendix 14.3: Baseline Data

## Baseline Data Analysis

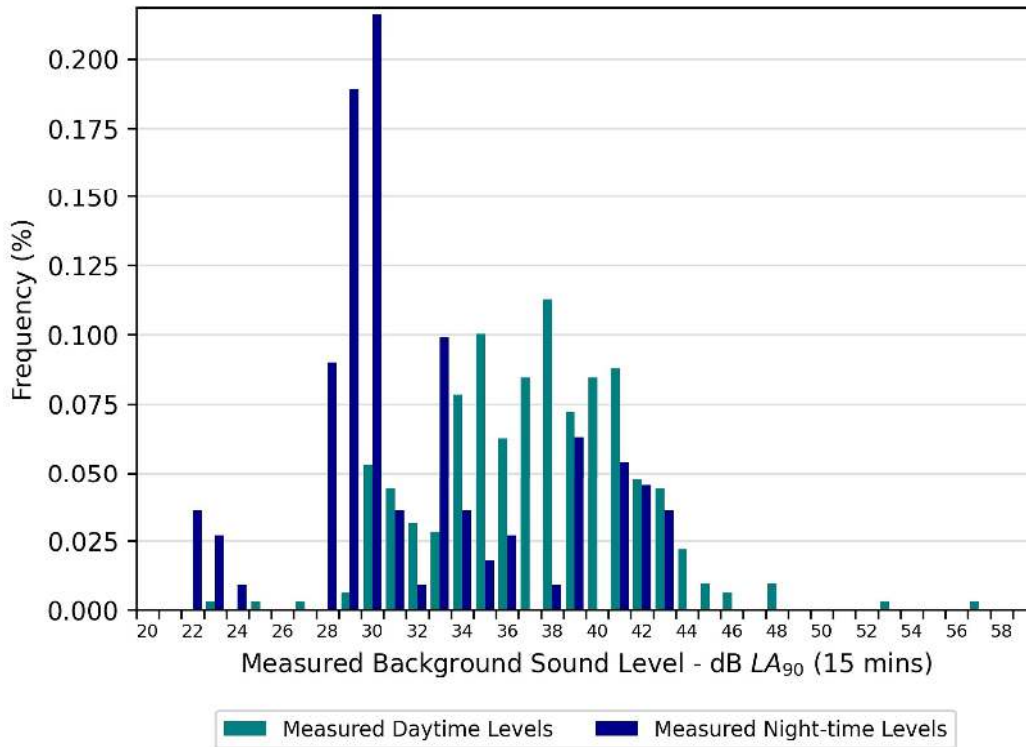
The following figures present the analysis of the baseline noise survey data captured during August 2023.

The representative baseline level values derived from the tables below are presented within Table 14.11 and Table 14.13 of Chapter 14: Noise and Vibration.

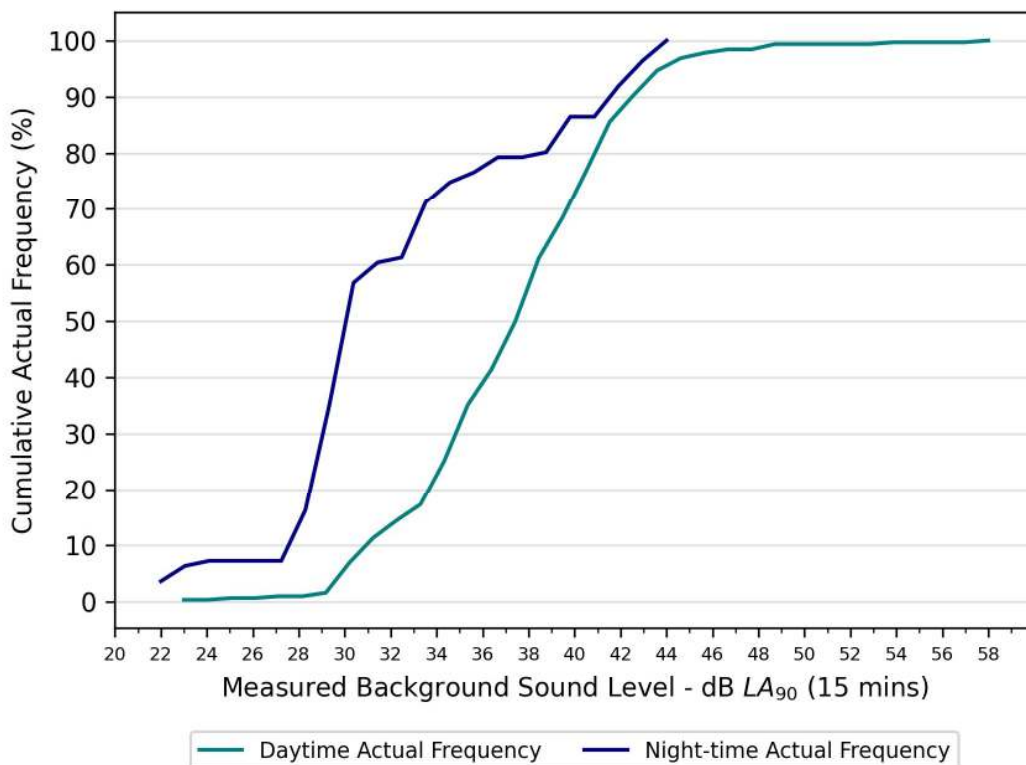
### Time History - NML1



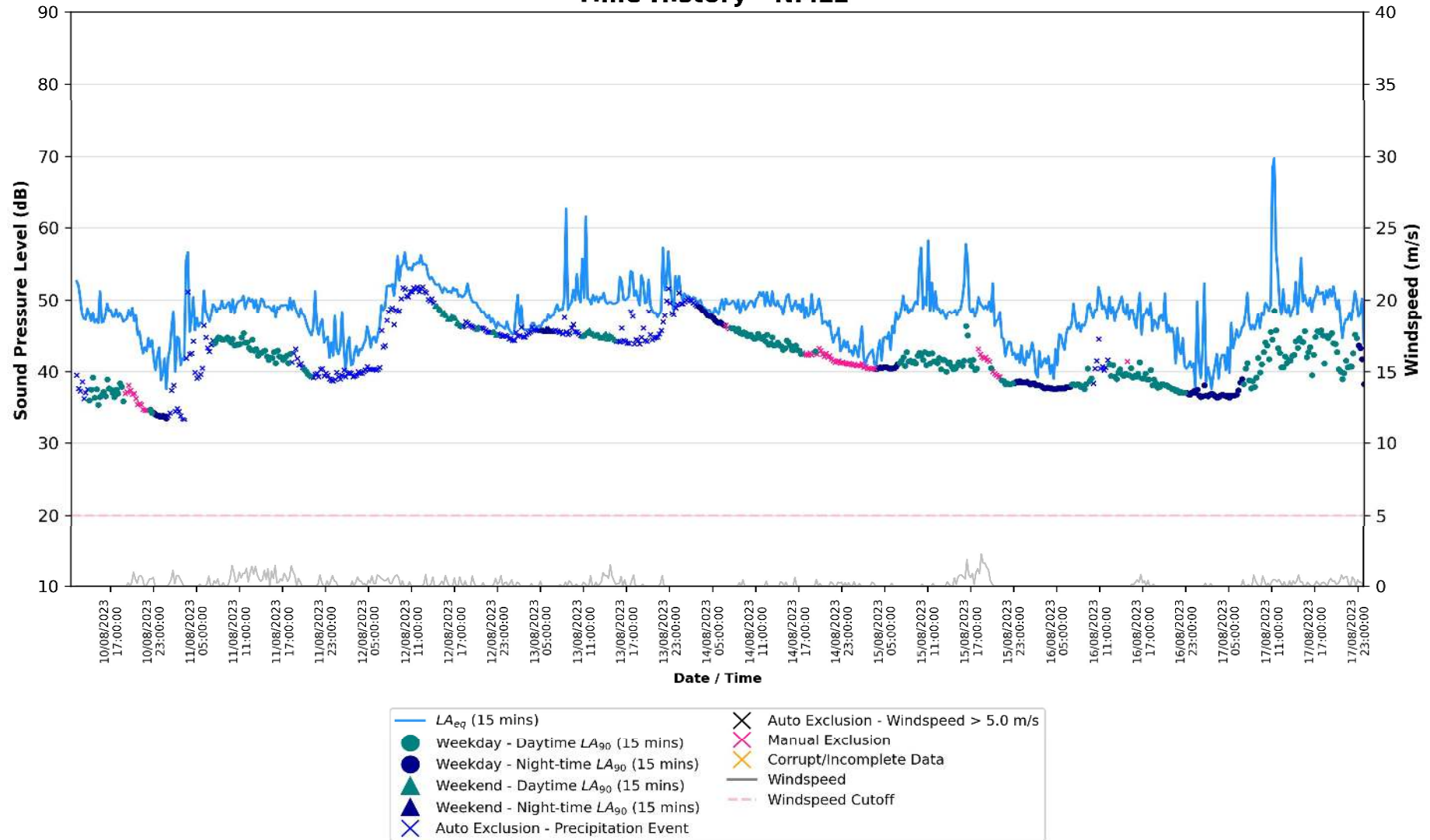
### Statistical Analysis – NML1



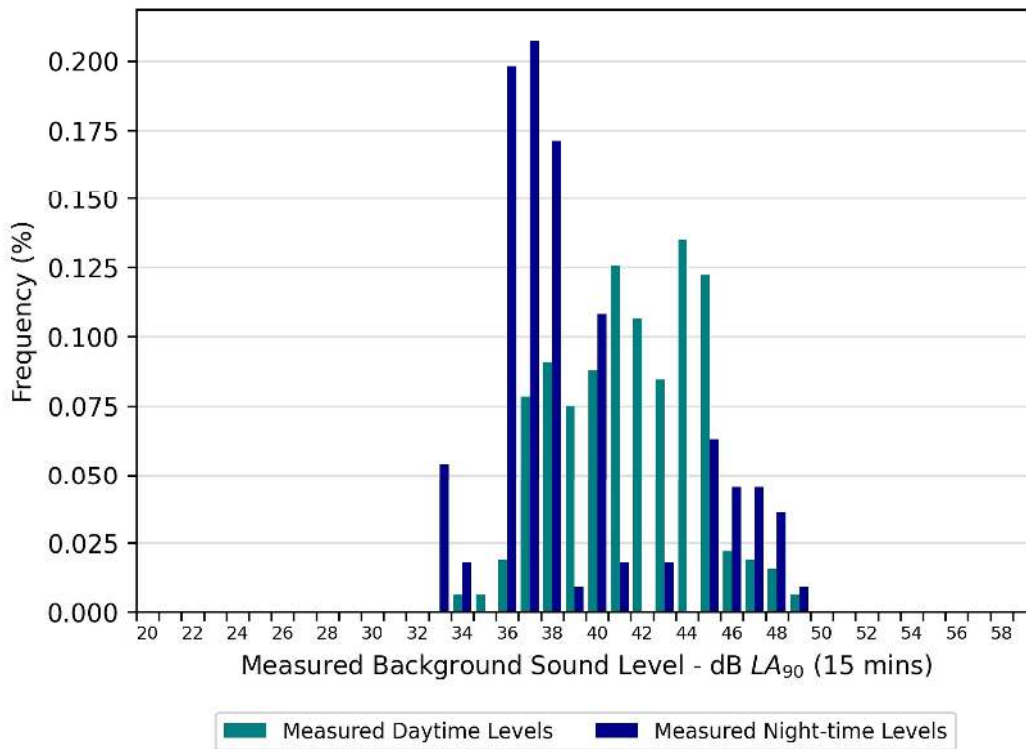
### Distribution Analysis – NML1



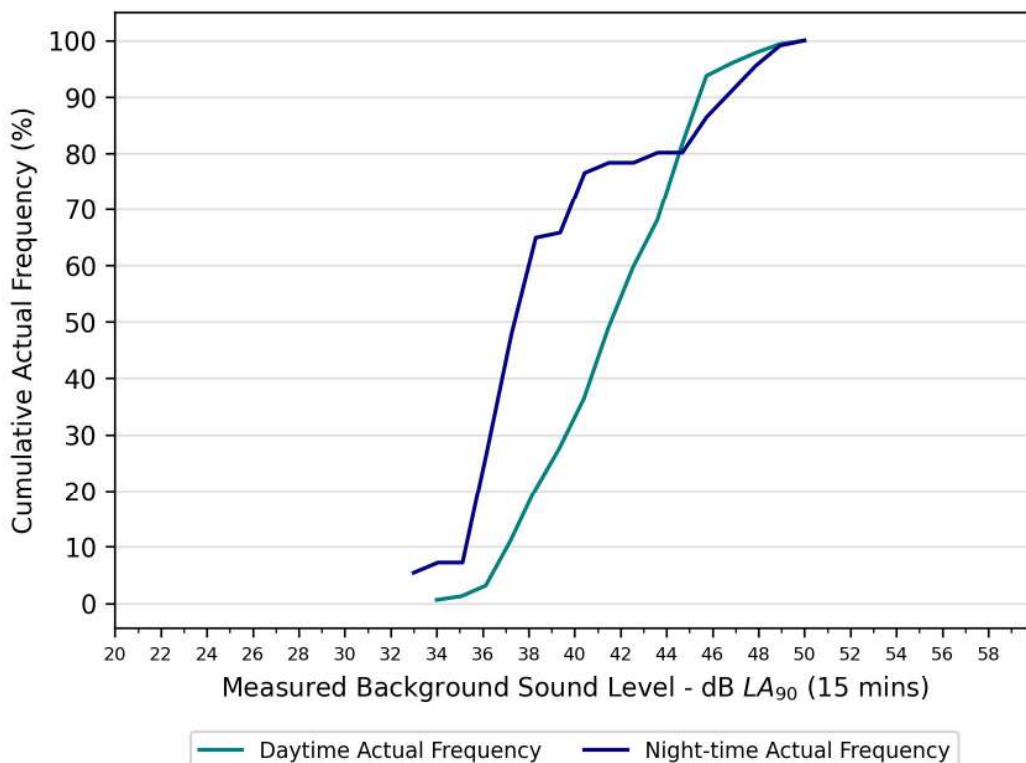
### Time History - NML2



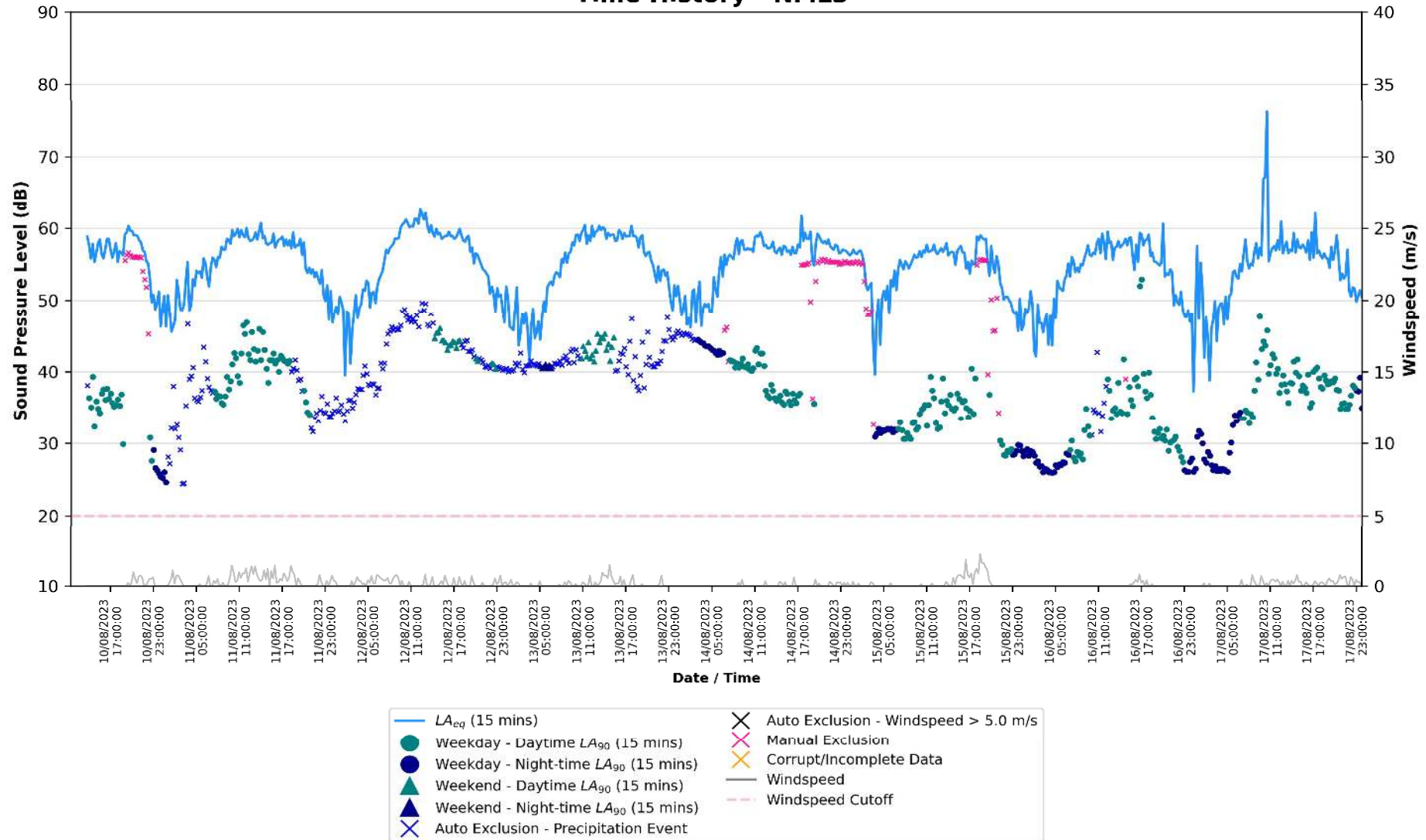
## Statistical Analysis – NML2



## Distribution Analysis – NML2

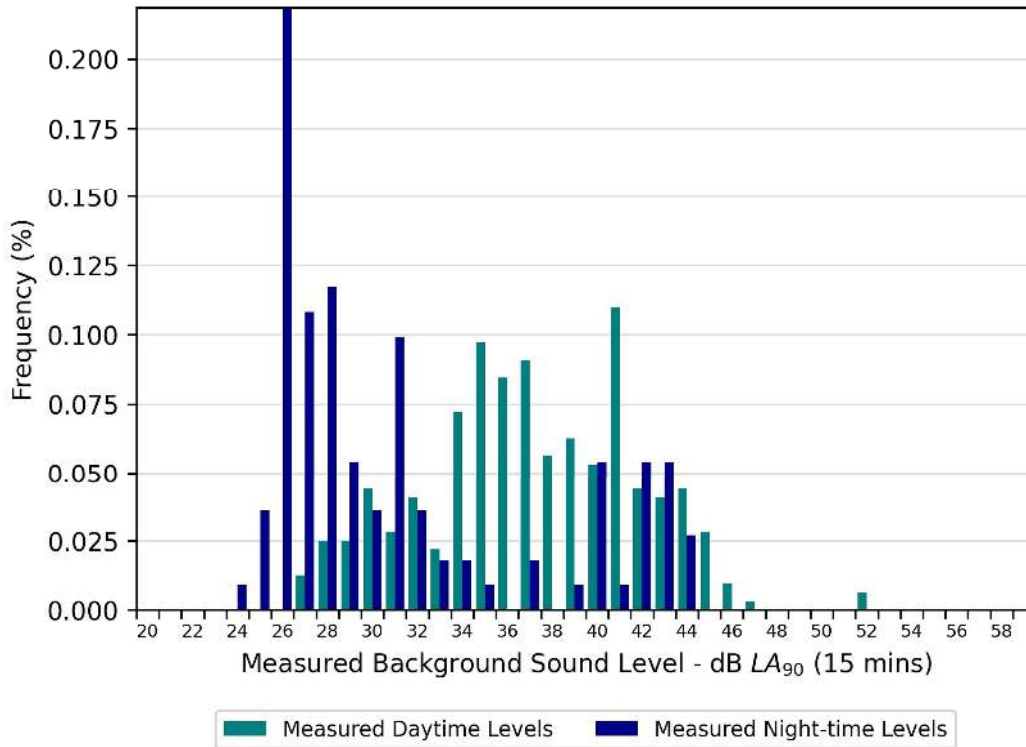


### Time History - NML3

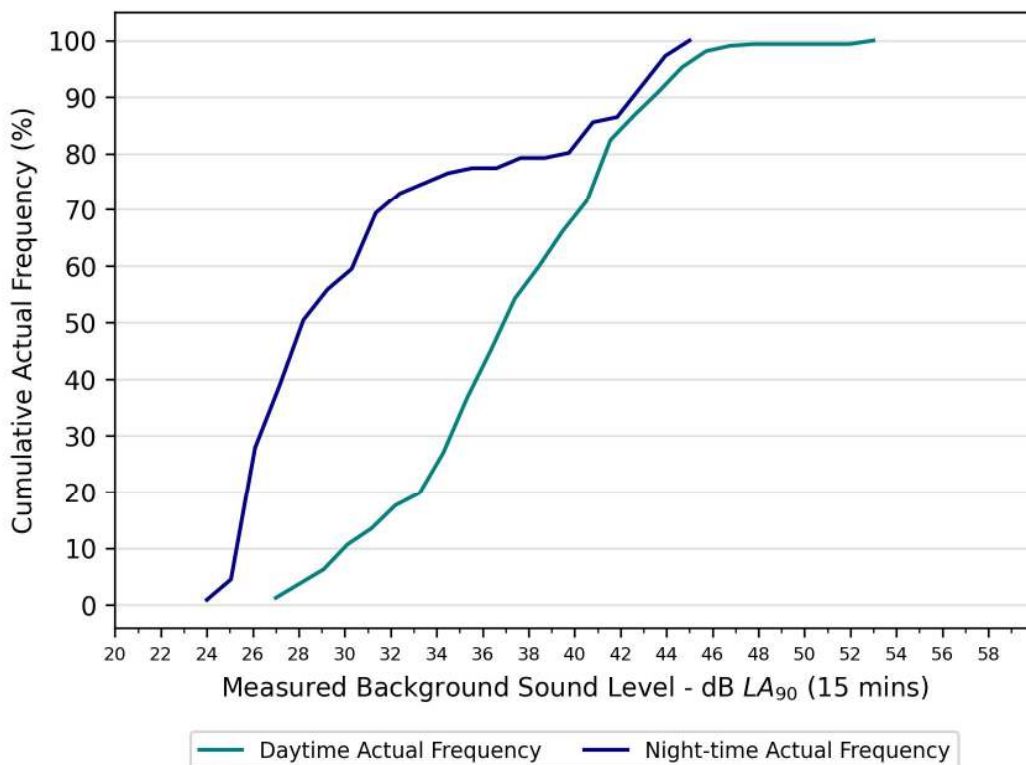




### Statistical Analysis – NML3



### Distribution Analysis – NML3





**Table A14.3.1: NML1 Calculated  $L_{Aeq(t)}$  Levels**

NML01  Assessment Period	Measured Sound Pressure Level (Filtered) dB $L_{Aeq(t)}$									
	Daytime <sub>M-F</sub>		Daytime <sub>Sat</sub>		Evenings		Weekend		Night-time	
	Weekdays 07:00 - 19:00		Saturday 07:00 - 13:00		Weekdays 19:00 - 23:00		Saturday 13:00 – 23:00 & Sunday 07:00 to 23:00		All days 23:00 - 07:00	
	$L_{Aeq}$	$t$	$L_{Aeq}$	$t$	$L_{Aeq}$	$t$	$L_{Aeq}$	$t$	$L_{Aeq}$	$t$
10/08/2023	58.9	300			55.9	240			51.3	300
11/08/2023	58.8	720			56	180			50.2	315
12/08/2023			61.4	15			58.2	525	55.2	345
13/08/2023							59.2	615	52.1	315
14/08/2023	58.4	720			55.1	240			50.1	480
15/08/2023	57.5	720			54.7	240			50.2	480
16/08/2023	58.5	675			56.1	240			50.8	480
17/08/2023	59	720			56.1	240			50.5	480
18/08/2023	59.8	720			56.9	240			54.3	195
<b>Average</b>		<b>60</b>				<b>57</b>			<b>52</b>	

**Table A14.3.2: NML2 Calculated  $L_{Aeq(t)}$  Levels**

NML02  Assessment Period	Measured Sound Pressure Level (Filtered) dB $L_{Aeq(t)}$									
	Daytime <sub>M-F</sub>		Daytime <sub>Sat</sub>		Evenings		Weekend		Night-time	
	Weekdays 07:00 - 19:00		Saturday 07:00 - 13:00		Weekdays 19:00 - 23:00		Saturday 13:00 – 23:00 & Sunday 07:00 to 23:00		All days 23:00 - 07:00	
	$L_{Aeq}$	$t$	$L_{Aeq}$	$t$	$L_{Aeq}$	$t$	$L_{Aeq}$	$t$	$L_{Aeq}$	$t$
10/08/2023	48	300			46.1	240			45.8	300
11/08/2023	49.3	720			47.4	180			44.5	315
12/08/2023			54.5	15			50.6	525	46.6	345
13/08/2023							51.5	615	49.6	315
14/08/2023	49.6	720			47	240			44	480
15/08/2023	50.9	720			47.3	240			42.7	480
16/08/2023	48.2	675			46.1	240			43.9	480
17/08/2023	56.4	720			49.3	240			43.9	480
18/08/2023	51.5	720			53	240			52.2	195
<b>Average</b>		<b>53</b>				<b>50</b>			<b>46</b>	

**Table A14.3.3: NML3 Calculated  $L_{Aeq(t)}$  Levels**

NML03  Assessment Period	Measured Sound Pressure Level (Filtered) dB $L_{Aeq(t)}$									
	Daytime <sub>M-F</sub>		Daytime <sub>Sat</sub>		Evenings		Weekend		Night-time	
	Weekdays 07:00 - 19:00		Saturday 07:00 - 13:00		Weekdays 19:00 - 23:00		Saturday 13:00 – 23:00 & Sunday 07:00 to 23:00		All days 23:00 - 07:00	
	$L_{Aeq}$	$t$	$L_{Aeq}$	$t$	$L_{Aeq}$	$t$	$L_{Aeq}$	$t$	$L_{Aeq}$	$t$
10/08/2023	57	315			58	240			51	300
11/08/2023	58	720			56	180			50	315
12/08/2023			60	15			58	525	49	345
13/08/2023							58	615	52	315
14/08/2023	58	720			58	240			54	480
15/08/2023	57	720			55	240			50	480
16/08/2023	57	675			54	240			51	480
17/08/2023	62	720			55	240			50	480
18/08/2023	58	720			56	240			53	195
<b>Average</b>		<b>59</b>				<b>57</b>			<b>51</b>	