



**VL1. View from Inveruglas Car Park Footpath - Baseline Photograph**  
Fig 4.5a

Grid Reference: 232240, 709861  
Distance to Proposed Development: 75m  
Camera Make: Canon EOS 6D

Camera Lens: 50mm  
Date: 31/10/2023  
Time: 13:29

Camera Height: 1.5m AGL  
HFOV: 53.5 degrees (planar projection)  
Paper Size: 841x297mm (half A1)

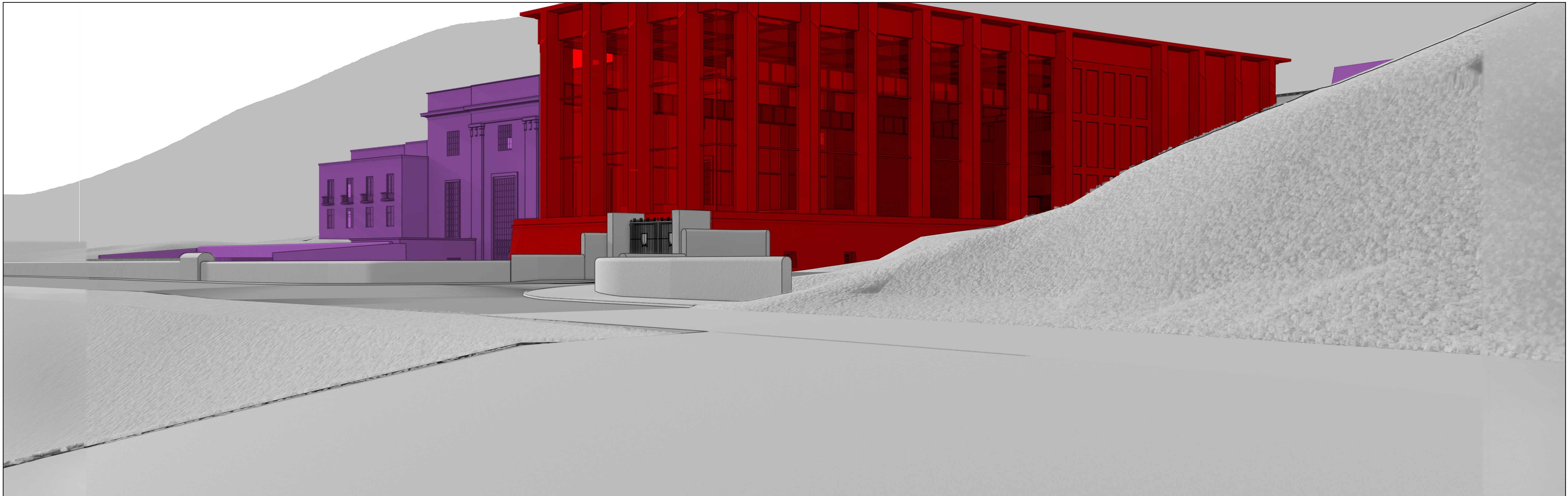
Printed Image Size: 820x260mm  
**Viewing Instructions:**  
View flat at a comfortable arms length

Title: Visualisation Location 1 - Existing  
Project: Sloy Pumped Hydro Storage  
Scheme

Client: SSE Renewables Services (UK) Ltd  
Revision: A  
Date: 03/12/2024

**PAGE \ PARK**

Page Park Architects  
20 James Morrison Street, Glasgow G1 5PE, UK  
T 0141 563 5440 F 0141563 5441  
mail@pagepark.co.uk www.pagepark.co.uk



**VL1. View from Inveruglas Car Park  
Footpath - Wireline**  
Fig 4.5b

Grid Reference: 232240, 709861  
Distance to Proposed Development: 75m  
Camera Make: Canon EOS 6D

Camera Lens: 50mm  
Date: 31/10/2023  
Time: 13:29

Camera Height: 1.5m AGL  
HFOV: 53.5 degrees (planar projection)  
Paper Size: 841x297mm (half A1)

Printed Image Size: 820x260mm  
**Viewing Instructions:**  
View flat at a comfortable arms length

Title: Visualisation Location 1 - Wireline  
Project: Sloy Pumped Hydro Storage  
Scheme

Client: SSE Renewables Services (UK) Ltd  
Revision: A  
Date: 03/12/2024



**VL1. View from Inveruglas Car Park Footpath - Photomontage**  
Fig 4.5c

Grid Reference: 232240, 709861  
Distance to Proposed Development: 75m  
Camera Make: Canon EOS 6D

Camera Lens: 50mm  
Date: 31/10/2023  
Time: 13:29

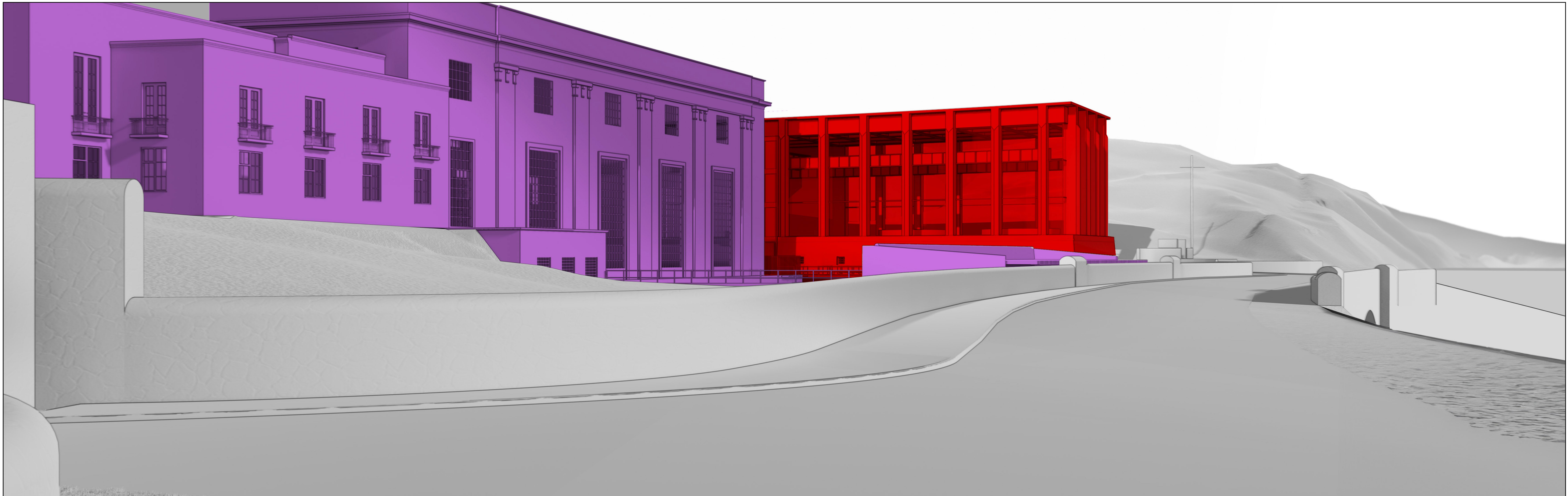
Camera Height: 1.5m AGL  
HFOV: 53.5 degrees (planar projection)  
Paper Size: 841x297mm (half A1)

Printed Image Size: 820x260mm  
**Viewing Instructions:**  
View flat at a comfortable arms length

Title: Visualisation Location 1 - Proposed Project: Sloy Pumped Hydro Storage Scheme

Client: SSE Renewables Services (UK) Ltd  
Revision: A  
Date: 03/12/2024







**VL2. View from the A82, south of Sloy Hydroelectric Power Station - Photomontage - Fig 4.6c**

Grid Reference: 232100, 709692  
Distance to Proposed Development: 150m  
Camera Make: Canon EOS 6D

Camera Lens: 50mm  
Date: 31/10/2023  
Time: 13:15

Camera Height: 1.5m AGL  
HFOV: 53.5 degrees (planar projection)  
Paper Size: 841x297mm (half A1)

Printed Image Size: 820x260mm  
**Viewing Instructions:**  
View flat at a comfortable arms length

Title: Visualisation Location 2 - Proposed  
Project: Sloy Pumped Hydro Storage  
Scheme

Client: SSE Renewables Services (UK) Ltd  
Revision: A  
Date: 03/12/2024



**VL3. View from Inveruglas Visitor Centre Terrace - Baseline Photograph**  
Fig 4.7a

Grid Reference: 232296, 709829  
Distance to Proposed Development: 135m  
Camera Make: Canon EOS 6D

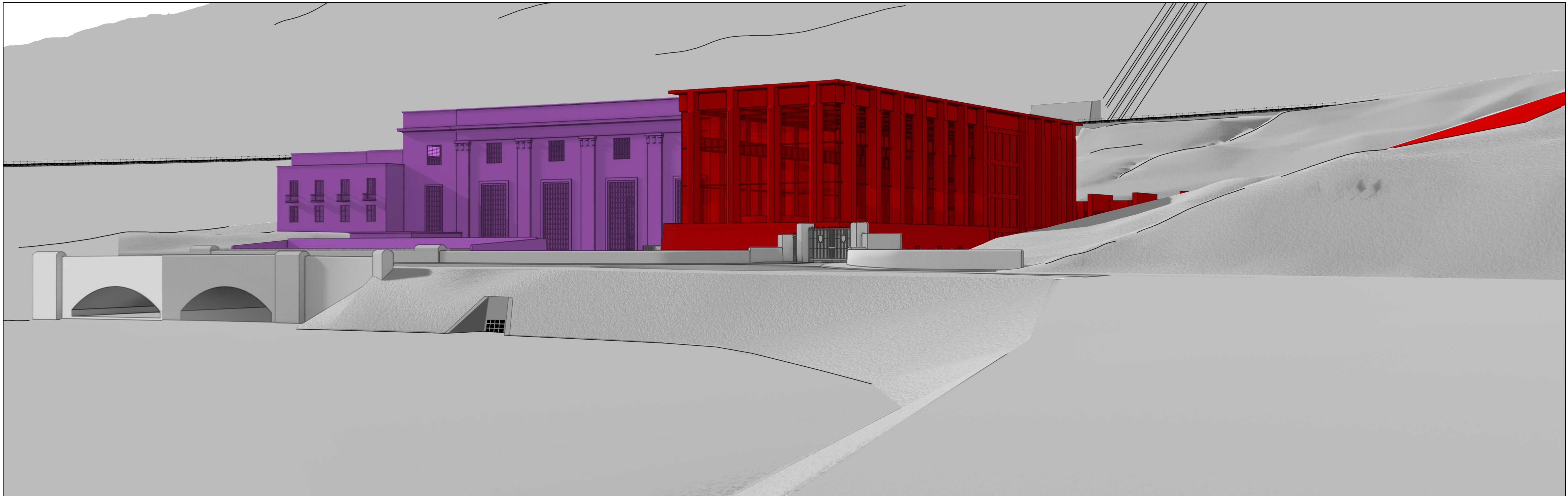
Camera Lens: 50mm  
Date: 31/10/2023  
Time: 14:00

Camera Height: 1.5m AGL  
HFOV: 53.5 degrees (planar projection)  
Paper Size: 841x297mm (half A1)

Printed Image Size: 820x260mm  
**Viewing Instructions:**  
View flat at a comfortable arms length

Title: Visualisation Location 3 - Existing  
Project: Sloy Pumped Hydro Storage  
Scheme

Client: SSE Renewables Services (UK) Ltd  
Revision: A  
Date: 03/12/2024



**VL3. View from Inveruglas Visitor Centre Terrace - Wireline**  
Fig 4.7b

Grid Reference: 232296, 709829  
Distance to Proposed Development: 135m  
Camera Make: Canon EOS 6D

Camera Lens: 50mm  
Date: 31/10/2023  
Time: 14:00

Camera Height: 1.5m AGL  
HFOV: 53.5 degrees (planar projection)  
Paper Size: 841x297mm (half A1)

Printed Image Size: 820x260mm  
**Viewing Instructions:**  
View flat at a comfortable arms length

Title: Visualisation Location 3 - Wireline  
Project: Sloy Pumped Hydro Storage Scheme

Client: SSE Renewables Services (UK) Ltd  
Revision: A  
Date: 03/12/2024





**VL3. View from Inveruglas Visitor Centre Terrace - Photomontage**  
Fig 4.7c

Grid Reference: 232296, 709829  
Distance to Proposed Development: 135m  
Camera Make: Canon EOS 6D

Camera Lens: 50mm  
Date: 31/10/2023  
Time: 14:00

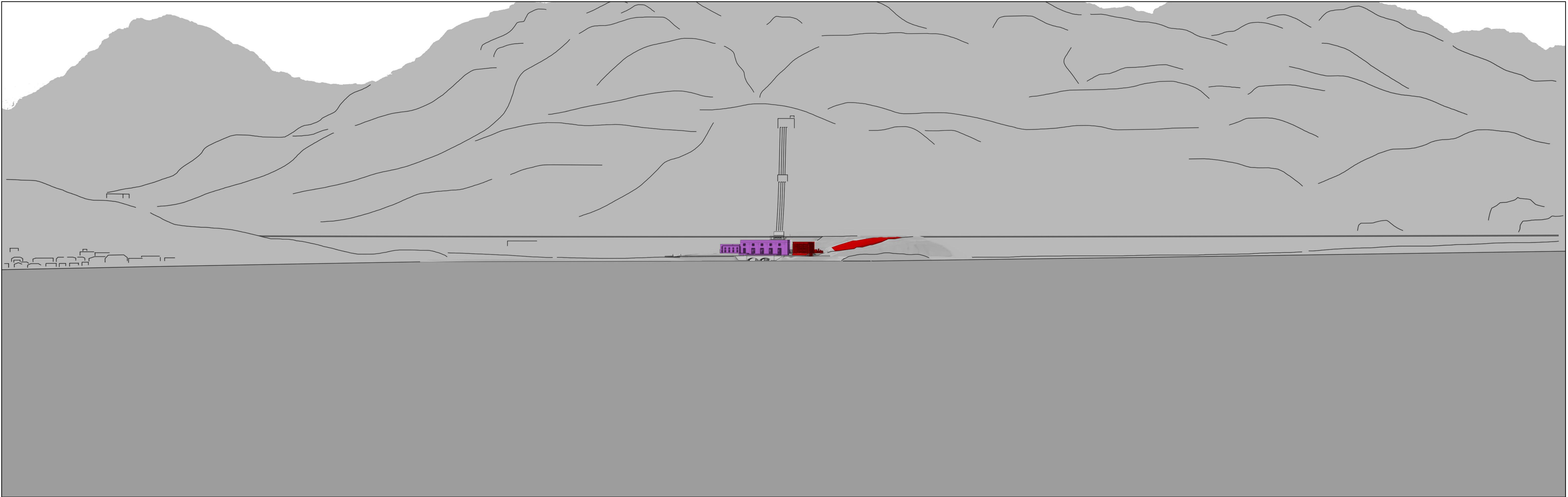
Camera Height: 1.5m AGL  
HFOV: 53.5 degrees (planar projection)  
Paper Size: 841x297mm (half A1)

Printed Image Size: 820x260mm  
**Viewing Instructions:**  
View flat at a comfortable arms length

Title: Visualisation Location 3 - Proposed Project: Sloy Pumped Hydro Storage Scheme

Client: SSE Renewables Services (UK) Ltd  
Revision: A  
Date: 03/12/2024





**VL4. View from Inversnaid Hotel Car Park - Wireline**  
Fig 4.8b

Grid Reference: 233686, 708868  
Distance to Proposed Development: 1.8km  
Camera Make: Canon EOS 6D

Camera Lens: 50mm  
Date: 19/03/2024  
Time: 13:49

Camera Height: 1.5m AGL  
HFOV: 53.5 degrees (planar projection)  
Paper Size: 841x297mm (half A1)

Printed Image Size: 820x260mm  
**Viewing Instructions:**  
View flat at a comfortable arms length

Title: Visualisation Location 4 - Wireline  
Project: Sloy Pumped Hydro Storage  
Scheme

Client: SSE Renewables Services (UK) Ltd  
Revision: A  
Date: 03/12/2024

**PAGE \ PARK**

Page Park Architects  
20 James Morrison Street, Glasgow G1 5PE, UK  
T 0141 553 5440 F 0141553 5441  
mail@pagepark.co.uk www.pagepark.co.uk





**VL5. View from Inverglas Island**  
(wireline only)  
Fig. 4.9

Grid Reference: 232259, 709593  
Distance to Proposed Development: 260m  
Camera Make: -

Camera Lens: -  
Date: -  
Time: -

Camera Height: 1.5m AGL  
HFOV: 53.5 degrees (planar projection)  
Paper Size: 841x297mm (half A1)

Printed Image Size: 820x260mm  
**Viewing Instructions:**  
View flat at a comfortable arms length

Title: Visualisation Location 5 - Wireline  
Project: Sloy Pumped Hydro Storage  
Scheme

Client: SSE Renewables Services (UK) Ltd  
Revision: A  
Date: 03/12/2024