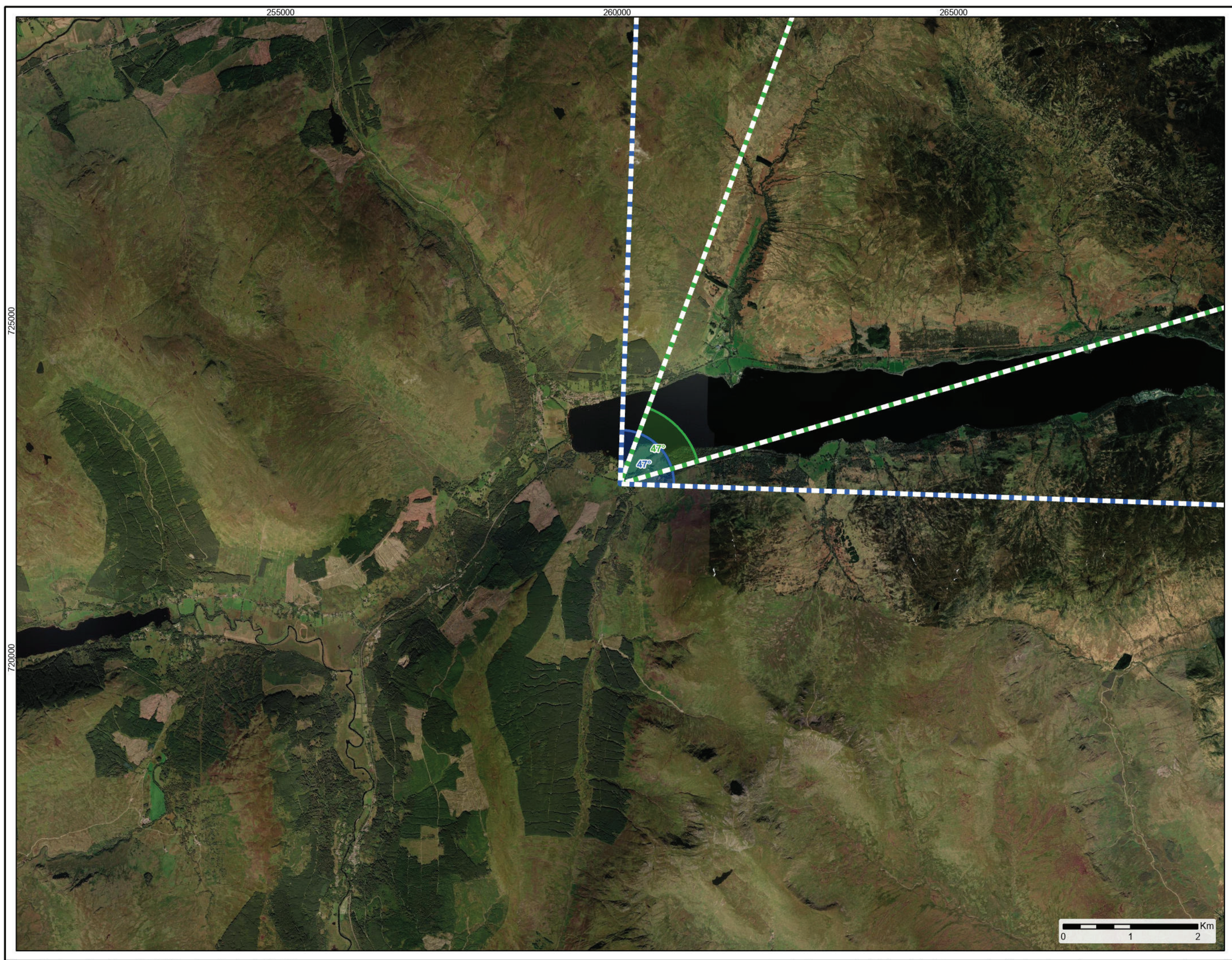


Viewpoint Location Plan Baseline Panorama (90° View) Scale: 1:340,000



Viewpoint Location Plan (53.5° View) Scale: 1:50,000

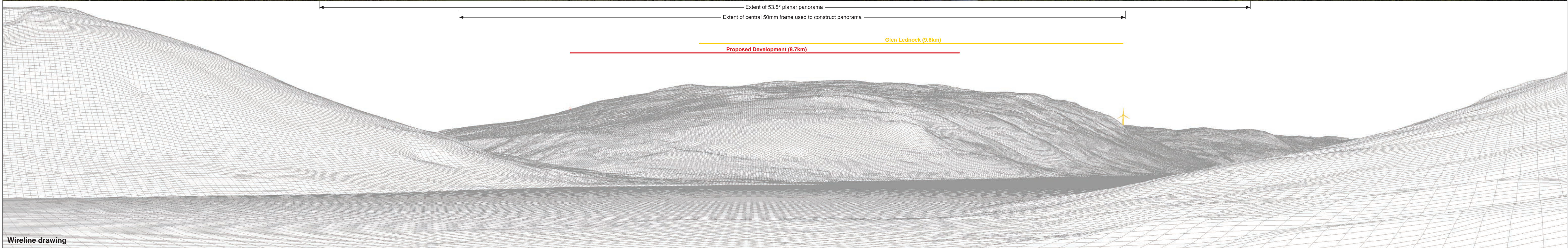
- Key**
- Viewpoint
 - Proposed Turbines
 - Site Boundary
 - 5km Radii
 - 20km Detailed LVIA Study Area
 - 45km Study Area
- Cumulative Wind Farms:**
- Operational
 - Consented
 - Appeal / Application
 - Scoping
- Panorama and Wireline (90°HFOV)
- Photomontage and Wireline (53.5°HFOV)
- Blade Tip Zone of Theoretical Visibility (ZTV) Bare Earth**
- No of Blade Tips Theoretically Visible**
- 1-3
 - 4-6
 - 7-9
 - 10-12

@ A3



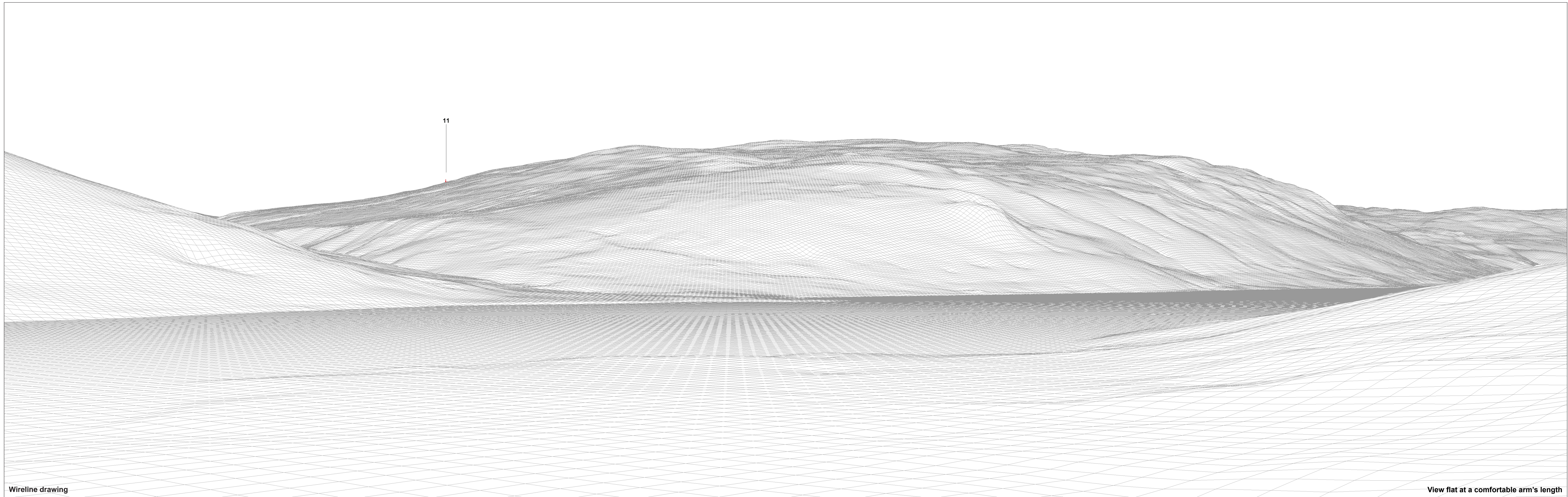
Figure 5.20a
Viewpoint Plan - VP 4
Carstran, minor road overlooking Lochearnhead

Glentarken Wind Farm
EIAR 2024



OS reference:	260046 E 722583 N	Horizontal field of view:	90 (cylindrical projection)	Camera:	Canon EOS 6D Mark II
Eye level:	138.9 mAOD	Principal distance:	522 mm	Lens:	Canon EF 50mm f/1.4
Direction of view:	47	Paper size:	841 x 297 mm (half A1)	Camera height:	1.5 m
Nearest turbine:	8.72 km	Correct printed image size:	820 x 130 mm	Date and time:	02.05.2024 10:32

Figure: 5.20b
 Viewpoint 4: Carstran, minor road overlooking Lochearnhead
 Glentarken



Wireline drawing

View flat at a comfortable arm's length

OS reference: 260046 E 722583 N
Eye level: 138.9 mAOD
Direction of view: 47
Nearest turbine: 8.72 km

Horizontal field of view: 53.5 (planar projection)
Principal distance: 812.5 mm
Paper size: 841 x 297 mm (half A1)
Correct printed image size: 820 x 260 mm

Camera: Canon EOS 6D Mark II
Lens: Canon EF 50mm f/1.4
Camera height: 1.5 m
Date and time: 02.05.2024 10:32

Figure: 5.20c
Viewpoint 4: Carstran, minor road overlooking Lochearnhead

Glentarken

Crown copyright. All rights reserved (2024). Licence number 0100031673



Baseline photograph

View flat at a comfortable arm's length

OS reference: 260046 E 722583 N
Eye level: 138.9 mAOD
Direction of view: 47
Nearest turbine: 8.72 km

Horizontal field of view: 53.5 (planar projection)
Principal distance: 812.5 mm
Paper size: 841 x 297 mm (half A1)
Correct printed image size: 820 x 260 mm

Camera: Canon EOS 6D Mark II
Lens: Canon EF 50mm f/1.4
Camera height: 1.5 m
Date and time: 02.05.2024 10:32

Figure: 5.20d
Viewpoint 4: Carstran, minor road overlooking Lochearnhead

Glentarken

Crown copyright. All rights reserved (2024). Licence number 0100031673



Photomontage: Proposed Development

View flat at a comfortable arm's length

OS reference:	260046 E 722583 N	Horizontal field of view:	53.5 (planar projection)	Camera:	Canon EOS 6D Mark II
Eye level:	138.9 mAOD	Principal distance:	812.5 mm	Lens:	Canon EF 50mm f/1.4
Direction of view:	47	Paper size:	841 x 297 mm (half A1)	Camera height:	1.5 m
Nearest turbine:	8.72 km	Correct printed image size:	820 x 260 mm	Date and time:	02.05.2024 10:32

Figure: 5.20e
Viewpoint 4: Carstran, minor road overlooking Lochearnhead
Glentarken

Crown copyright. All rights reserved (2024). Licence number 0100031673