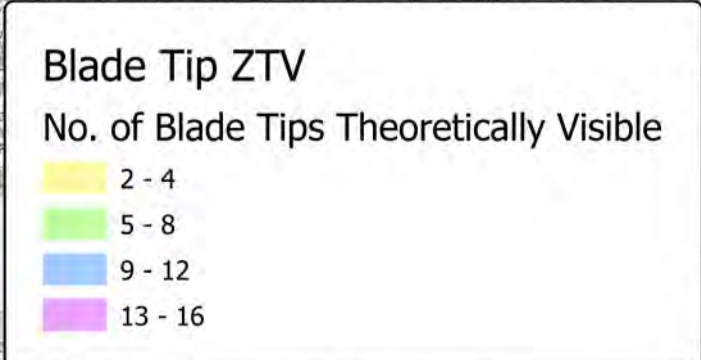
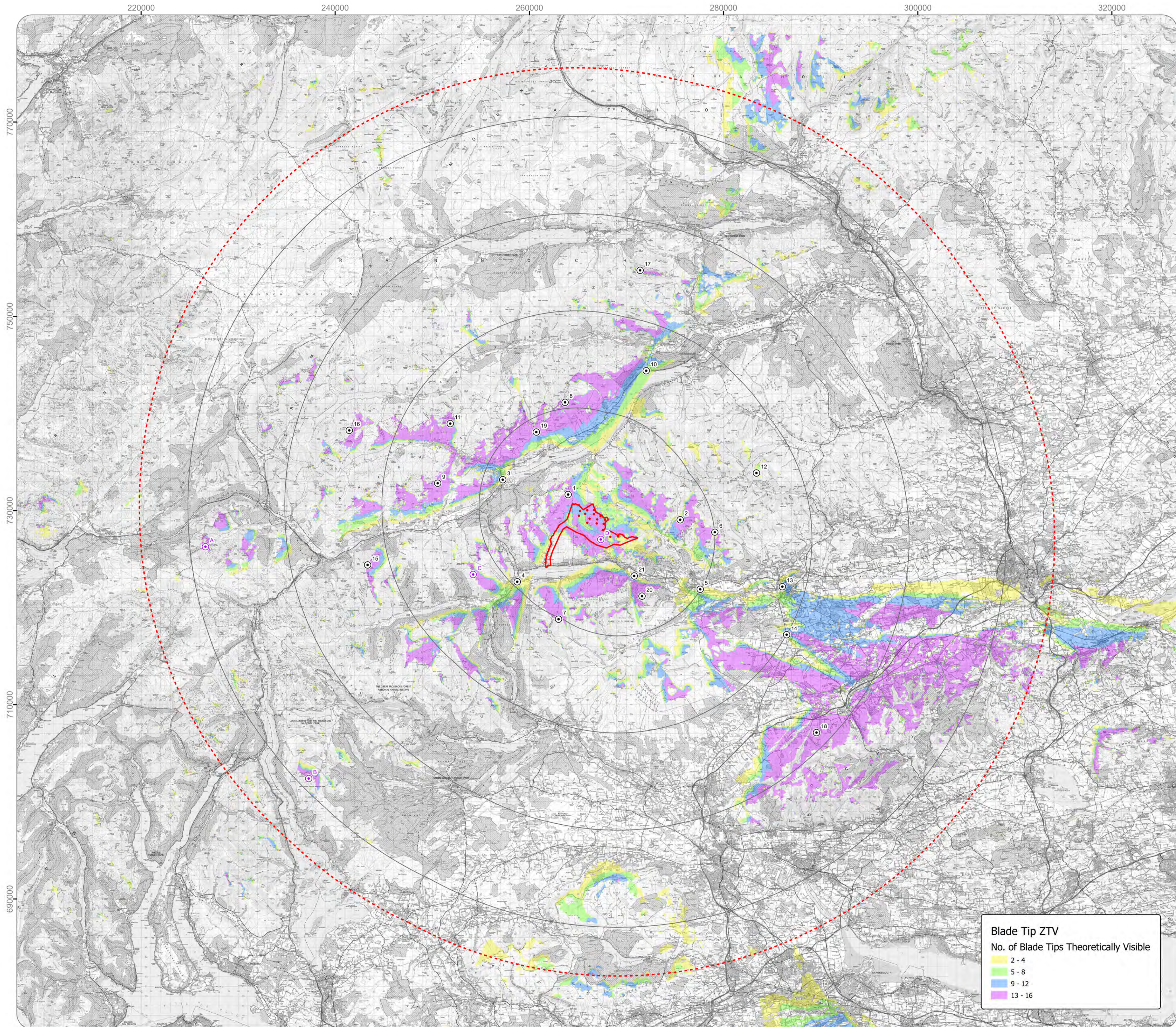


APPENDIX C – SECOND PUBLIC EXHIBITION MATERIALS



- Legend**
- Scoping Layout Turbine
 - ▭ Site Boundary
 - 10km Radii
 - ⋯ 45km Study Area
 - ⊙ LVIA Viewpoints
 1. Rob Roy Way near Meall Odhar (656 m AOD)
 2. Ben Chonzie (931 m AOD)
 3. Breadalbane Park, Killin
 4. A84 near Lochearnhead
 5. Glebe Road, Comrie
 6. Carn Choi (786 m AOD)
 7. Ben Vorlich (925 m AOD)
 8. Ben Lawers (1,214 m AOD)
 9. Bheinn Breac (796 m AOD)
 10. A827 near Fearnan
 11. Meall Ghaordaidh (1,039 m AOD)
 12. Sron Bealaidh (725 m AOD)
 13. MacRosty Park Crieff
 14. A822 near Muthill
 15. Ben More (1174 m AOD)
 16. Beinn Sheasgarnaich (1,078 m AOD)
 17. Schiehallion (1,083 m AOD)
 18. Kinpauch Hill – core path from Blackford
 19. Lochan na Lairige pass
 20. Mor Bheinn
 21. St Fillans Hill
 - ⊙ Wireframe Only Viewpoints
 - A. Ben Lui (1,130 m AOD)
 - B. Ben Lomond (974 m AOD)
 - C. Meall an t-Seallaidh
 - D. Core Path STF1/101

Blade tip:	180m	Observer height:	2m
DTM:	OS Terrain 50 DTM	Surface features:	Excluded
DTM resolution:	50m	Earth curvature:	Included

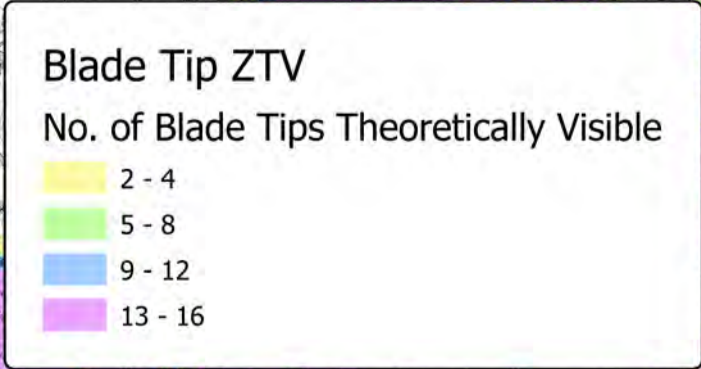
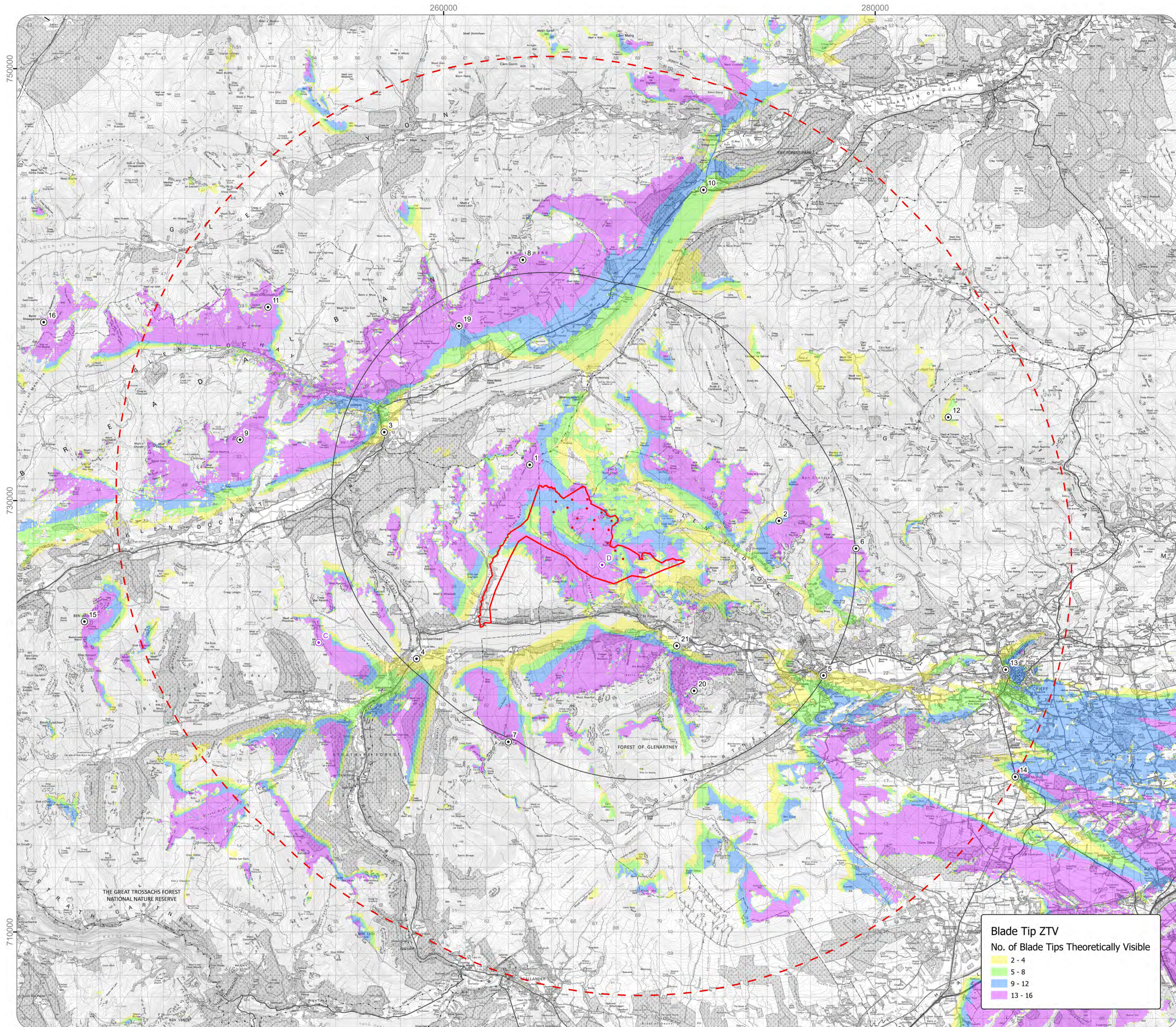


GLENTARKEN WIND FARM FOR CONSULTATION

Blade Tip ZTV

Ref No:	221774	Created By:	RA	Rev No:	1
Scale:	1:200,000	Drawing Size:	A1	Date:	07/05/2024
Coordinate System:	BNG OS GB 1936 Datum				





Legend

- Scoping Layout Turbine
- ▭ Site Boundary
- 10km Radii
- ▭ 20km Study Area
- LVIA Viewpoints
 1. Rob Roy Way near Meall Odhar (656 m AOD)
 2. Ben Chonzie (931 m AOD)
 3. Breadalbane Park, Killin
 4. A84 near Lochearnhead
 5. Glebe Road, Comrie
 6. Carn Choi (786 m AOD)
 7. Ben Vorlich (925 m AOD)
 8. Ben Lawers (1,214 m AOD)
 9. Bheinn Breac (796 m AOD)
 10. A827 near Fearnan
 11. Meall Ghaordaidh (1,039 m AOD)
 12. Sron Bealaidh (725 m AOD)
 13. MacRosty Park Crieff
 14. A822 near Muthill
 15. Ben More (1174 m AOD)
 16. Beinn Sheasgarnaich (1,078 m AOD)
 18. Kinpauch Hill – core path from Blackford
 19. Lochan na Lairige pass
 20. Mor Bheinn
 21. St Fillans Hill
- Wireframe Only Viewpoints
 - C. Meall an t-Seallaidh
 - D. Core Path STFI/101

Blade tip:	180m	Observer height:	2m
DTM:	OS Terrain 50 DTM	Surface features:	Excluded
DTM resolution:	50m	Earth curvature:	Included



GLENTARKEN WIND FARM FOR CONSULTATION

Blade Tip ZTV

Ref No:	221774	Created By:	RA	Rev No:	1
Scale:	1:90,000	Drawing Size:	A1	Date:	07/05/2024
Coordinate System:	BNG OS GB 1936 Datum				



Contains OS data © Crown copyright and database right (2024).



View flat at a comfortable arm's length

Baseline Photograph.



View flat at a comfortable arm's length

Photomontage: Proposed Development.

OS reference: 262919 E 718914 N
 Eye level: 984.24 mAOD
 Direction of view: 23°
 Nearest turbine: 9.967 km

Horizontal field of view: 53.5° (planar projection)
 Principal distance: 812.5 mm
 Paper size: 841 x 594 mm (A1)
 Correct printed image size: 820 x 260 mm

Camera: Canon EOS 6D
 Lens: Canon EF 50mm f/1.4
 Camera height: 1.5 m
 Date and time: 16/04/2024 09:53

View from Ben Vorlich

Glentarken Wind Farm



View flat at a comfortable arm's length

Baseline Photograph.



View flat at a comfortable arm's length

Photomontage: Proposed Development.

View from Lochan na Lairige Pass

Glentarken Wind Farm

OS reference: 260890 E 737753 N
Eye level: 418.46 mAOD
Direction of view: 147°
Nearest turbine: 8.908 km

Horizontal field of view: 53.5° (planar projection)
Principal distance: 812.5 mm
Paper size: 841 x 594 mm (A1)
Correct printed image size: 820 x 260 mm

Camera: Canon EOS 6D
Lens: Canon EF 50mm f/1.4
Camera height: 1.5 m
Date and time: 16/04/2024 13:21



View flat at a comfortable arm's length

Baseline Photograph.



View flat at a comfortable arm's length

Photomontage: Proposed Development.

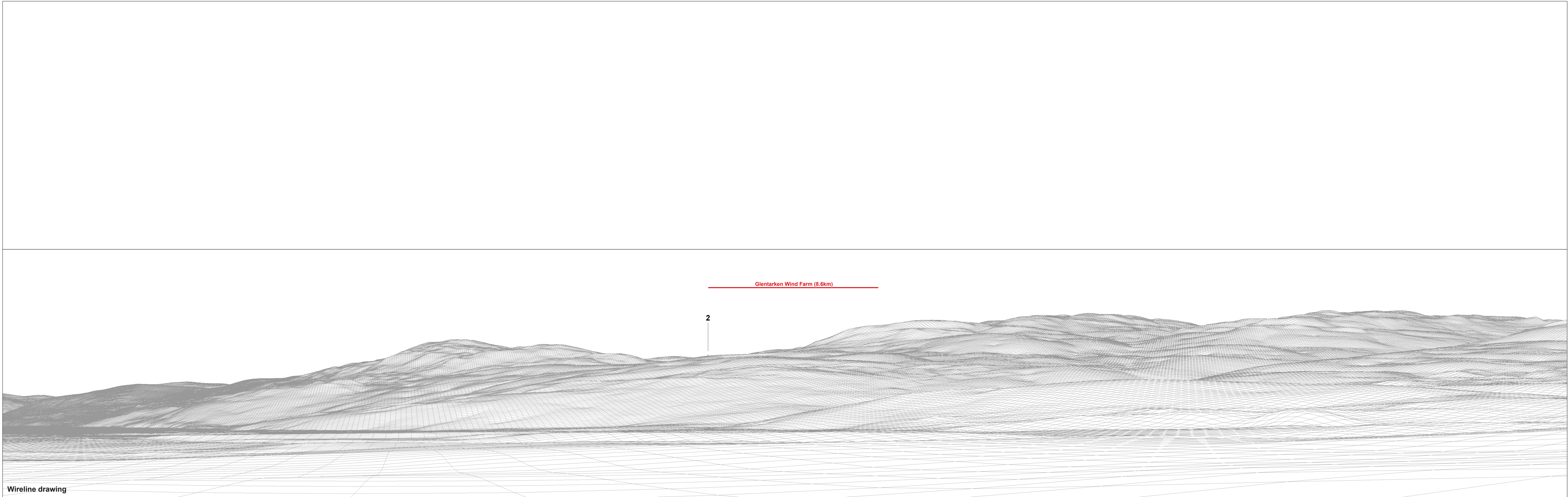
View from St Fillans Hill

Glentarken Wind Farm

OS reference: 270826 E 723250 N
 Eye level: 177.76m AOD
 Direction of view: 236°
 Nearest turbine: 4.753 km

Horizontal field of view: 53.5° (planar projection)
 Principal distance: 812.5 mm
 Paper size: 841 x 594 mm (A1)
 Correct printed image size: 820 x 260 mm

Camera: Canon EOS 6D
 Lens: Canon EF 50mm f/1.4
 Camera height: 1.5 m
 Date and time: 16/04/2024 14:54

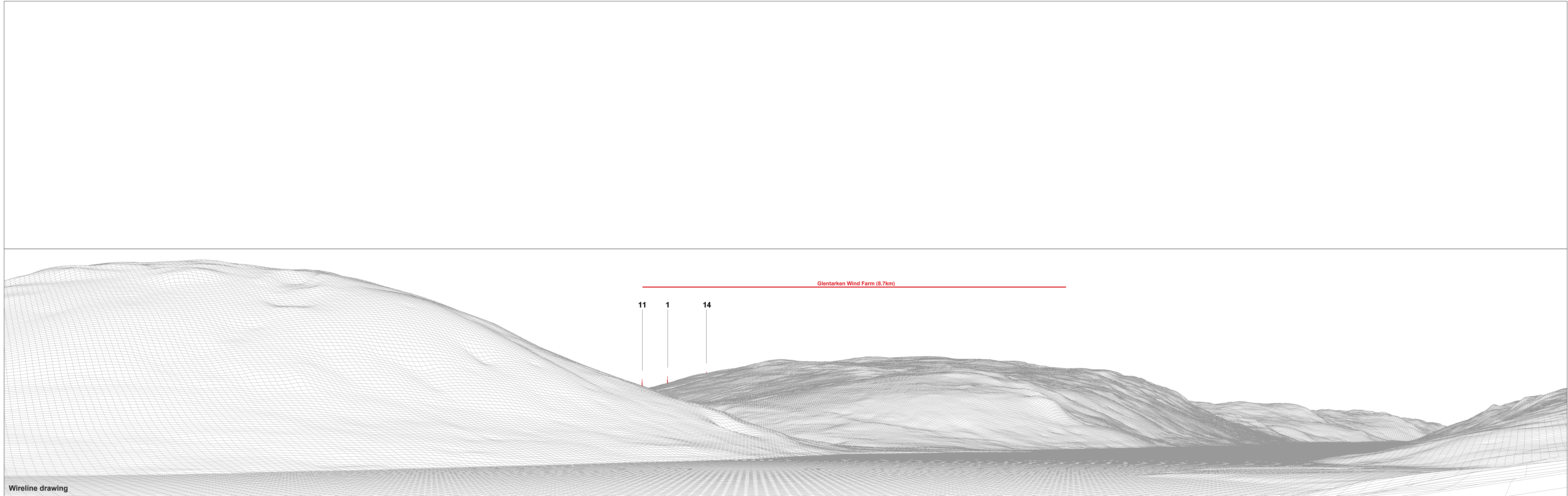


Wireline drawing

OS reference: 257178 E 733057 N
Eye level: 119.17 mAOD
Direction of view: 112°
Nearest turbine: 8.595 km

Horizontal field of view: 90° (cylindrical projection)
Principal distance: 522 mm
Paper size: 841 x 297 mm (half A1)
Correct printed image size: 820 x 130 mm

Camera: Canon EOS 6D
Lens: Canon EF 50mm f/1.4
Camera height: 1.5 m
Date and time: 16/04/2024 12:39



Wireline drawing

OS reference:	259454 E 722799 N	Horizontal field of view:	90° (cylindrical projection)
Eye level:	131.98 mAOD	Principal distance:	522 mm
Direction of view:	47°	Paper size:	841 x 297 mm (half A1)
Nearest turbine:	8.736 km	Correct printed image size:	820 x 130 mm

View from minor road overlooking Locheanhead

Glentarken Wind Farm

© Crown copyright, All rights reserved (2023). Licence number 0100031673