

## Environmental Impact Assessment

Environmental Impact Assessment or EIA is the process of examining the anticipated environmental effects of a proposed development, through consultation and preparation of an Environmental Impact Assessment Report (EIAR). The EIAR is a report of the effects, if any, which the proposed project, if built, would have on the environment. It is prepared to inform the EIA process and will be included in the final planning application which will be submitted to the required planning authority.

Scoping, which is the process of deciding what information should be contained in the EIAR and involves interactions with relevant consultees who are contacted to provide feedback as to what they would like to see included and assessed in the Environmental Impact Assessment Report (EIAR), has now commenced. **Should you have a view on what you would like to see included in the EIAR, please do let us know at the contact details provided overleaf.**

## Our Focus

Our commitment is to engage inclusively with all our stakeholders. Through open and early dialogue, we aim to design and build projects that contribute to local sustainable development, while supporting and enhancing a sense of community spirit and solidarity. Our Project Manager and Community Liaison Officer for the project have already visited near neighbours within 2km of the proposed new wind farm earlier this year.

Through the proposed Crumhach Wind Farm we are working to support job creation and contribute to Sligo's economy, all while working in close step with the local community and helping to deliver Ireland's ambition to achieve 70% renewable electricity by 2030, as set out in the Climate Action Plan. We have also begun work on the installation of a temporary meteorological mast which will be used for measuring and collecting data on wind conditions.

## Next Steps

- Continue scoping to inform Environmental Impact Assessment process.
- Continue environmental studies.
- In-person consultation events to take place in locality in 2025.
- Further information to be distributed to near neighbours and local stakeholders in the months ahead, alongside continued community engagement.
- Indicative date for planning submission in late 2025.

## About SSE Renewables

SSE Renewables is a leading developer and operator of renewable energy in Ireland, operating some of the largest onshore wind farms on the island, including the 174MW Galway Wind Park in Connemara and the 73MW Slieve Kirk Wind Park outside Derry City. Part of SSE plc, the FTSE-listed energy infrastructure company, its strategy is to lead the transition to a net zero future through the world-class development, construction and operation of clean power assets across a diverse mix of renewable technologies.

SSE Renewables is investing around €8bn to 2027, or almost €4.5m a day on average, to support the delivery of SSE's Net Zero Acceleration Programme to address climate change head on. This includes plans to increase installed renewable energy capacity to around 9GW by 2027, including the delivery of the world's largest offshore wind farm, currently in construction. SSE Renewables has a team of around 2,000 renewable energy professionals based across Ireland and the UK, Continental Europe, and Japan, all committed to delivering the green energy the world needs now and in the future.

## Contact us

**Conor Joy**

External Relations Manager

Email [clo@sse.com](mailto:clo@sse.com), Call 087 057 3409

**Post**

SSE Renewables, Red Oak South, South County Business Park, Leopardstown, Dublin 18, Ireland.

To learn more about the proposed **Crumhach Wind Farm**, please visit: [www.sserenewables.com/crumhachwindfarm](http://www.sserenewables.com/crumhachwindfarm)



# Crumhach Wind Farm

a project by SSE Renewables

Information Leaflet – September 2024



# Crumhach Wind Farm

## SSE Renewables is exploring the potential for a new wind energy and battery project at the site of the existing Dunneill and Kingsmountain wind farms.

We have operated the Kingsmountain Wind Farm (since 2003) and the neighboring Dunneill Wind Farm (since 2010), with the latter receiving an approval to extend its operational life last year. Together, both wind farms constitute over 36MW of clean energy, power 24,000 homes, remove 29,000 tonnes of harmful carbon dioxide emissions from Ireland's electricity fuel mix and provide a significant economic boost to the locality.

Through the proposed Crumhach Wind Farm we are now seeking to secure and extend our over two-decade long presence in County Sligo.

### Project Overview

Crumhach Wind Farm would involve the repowering of the Dunneill and Kingsmountain wind farms, in addition to a greenfield development located in-between the existing wind farms and on lands located south-south-west of the existing wind farms.

Repowering would involve the dismantling and replacement of turbine equipment, with existing infrastructure on site such as roads and grid connection equipment being reused where possible.

Repowering can provide several benefits including continuing the productive use of existing windfarm sites, significantly increasing the clean energy produced at these sites.

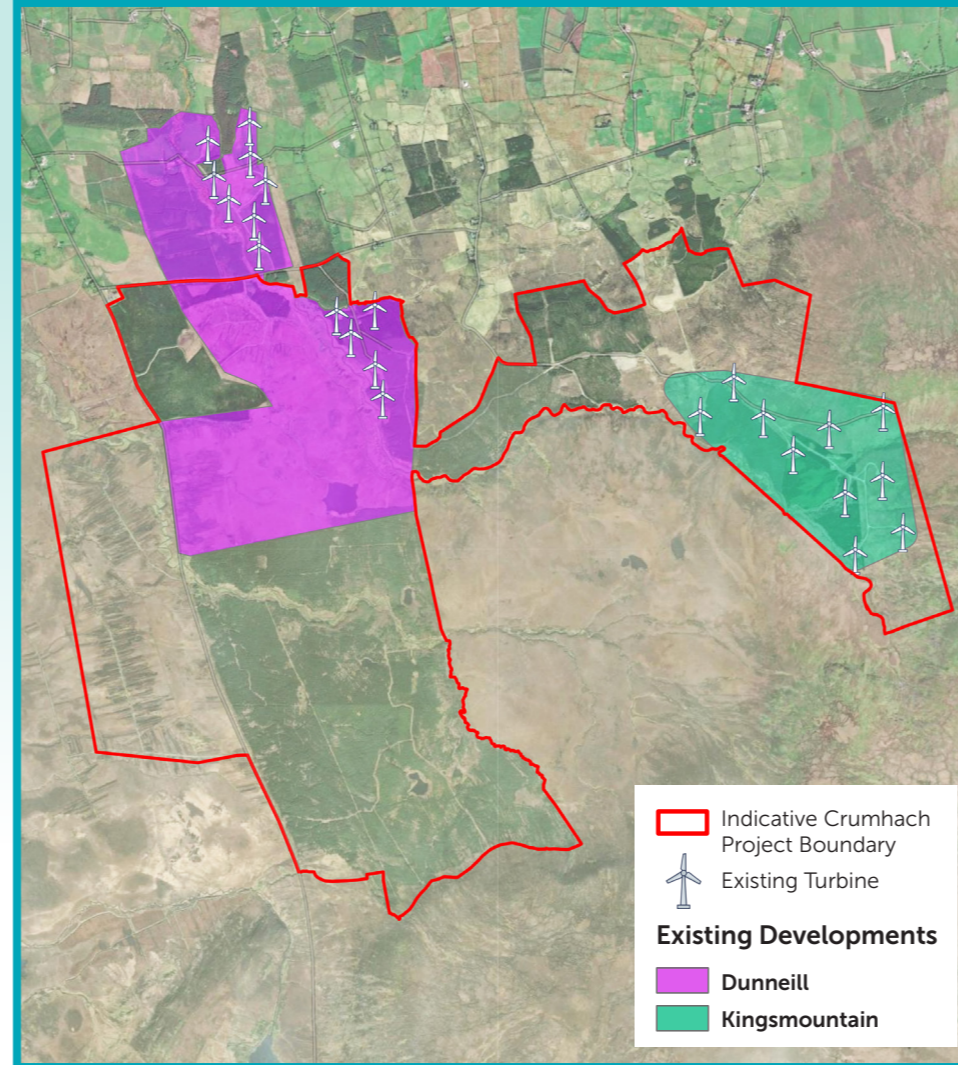
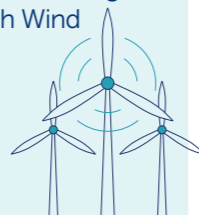
While the number and layout of turbines will be refined during the upcoming project design stages,

the proposed development will likely comprise the removal of the 23 existing wind turbines from Dunneill Wind Farm (13 turbines) and Kingsmountain Wind Farm (10 turbines) and the construction of approximately 25 wind turbines across the proposed site, in addition to an onsite substation that will also include battery storage.

As part of the proposed development is on Coillte lands, please contact [linfo@coillte.ie](mailto:linfo@coillte.ie) if you have any Coillte related queries about this proposal.

While still at development stage, the indicative turbine parameters being considered for Crumhach Wind Farm are as follows:

**Tip Height:** 180m  
**Hub Height:** 99m-105m  
**Rotor Diameter:** 149-155m



Indicative site boundary for the proposed Crumhach Wind Farm (Red), with the existing Dunneill Wind Farm (Purple) and Kingsmountain Wind Farm (Green) turbine layout noted. The number and new layout of turbines for Crumhach Wind Farm will be refined during the upcoming project design stages.



### Community Benefit Fund

If consented and constructed, Crumhach Wind Farm would also have an associated community benefit fund, which would be implemented in line with government best practice.

Since 2004, the existing Kingsmountain and Dunneill Community Fund has contributed €624,675 to local groups in the vicinity of the existing wind farms. In June 2024, a total of €50,821 from the fund was distributed to support 28 community groups during a presentation event held in the Old School House, Templeboy (photo above).

While it is not possible at this time to indicate a monetary value on the community benefit fund linked to the proposed Crumhach Wind Farm, it would represent a significant increase on the existing Kingsmountain and Dunneill Community Fund.

Crumhach Wind Farm would also be a significant contributor to commercial rates, adding to the contribution which our existing wind farms have already made to the local exchequer, helping to improve infrastructure and services to improve infrastructure and services in County Sligo more widely.