

Welcome

Dounreay Temporary Laydown Area

Thank you for taking the time to visit our exhibition for the proposed temporary turbine laydown area at Dounreay.

SSE Renewables is submitting a Proposal of Application Notice (PAN) to the Highland Council for a temporary laydown area.

The purpose of this exhibition is to engage with the local community and interested parties about our proposals and the work we have undertaken so far. This is a chance for us to share our initial plans and seek your feedback on our proposals. As well as an opportunity for people to raise questions, concerns, ideas or comments that will be considered as part of the development process.

Feedback from this consultation will help shape the development layout for the temporary Dounreay turbine laydown area.

Please take as much time as you like to view these information boards on display, members of the project team are on hand to assist with any questions you may have.



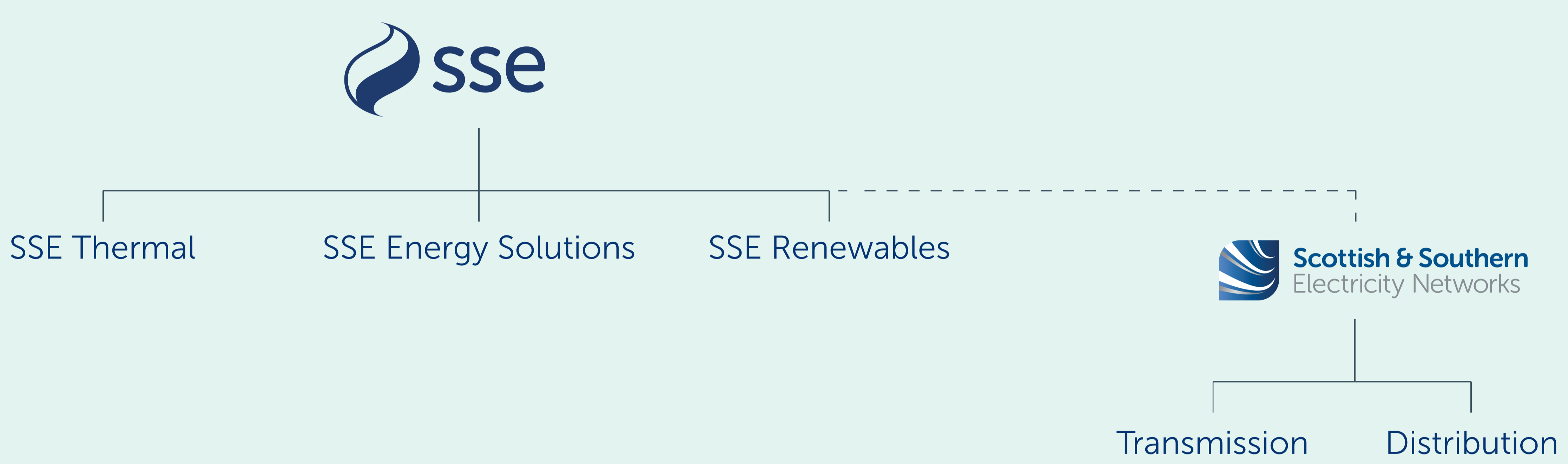


About SSE Renewables

SSE Renewables is a leading developer and operator of renewable energy projects, headquartered in the UK and Ireland with a growing presence internationally. Our strategy is to lead the transition to a net zero future through the world-class development, construction and operation of renewable power assets.

We are part of SSE plc, the UK-listed energy infrastructure company which is investing £18bn to 2027, or £10m a day, to contribute to net zero and address climate change head on. This includes plans by SSE Renewables to increase its installed renewable energy capacity to 9GW by 2027, and over 16GW by 2032.

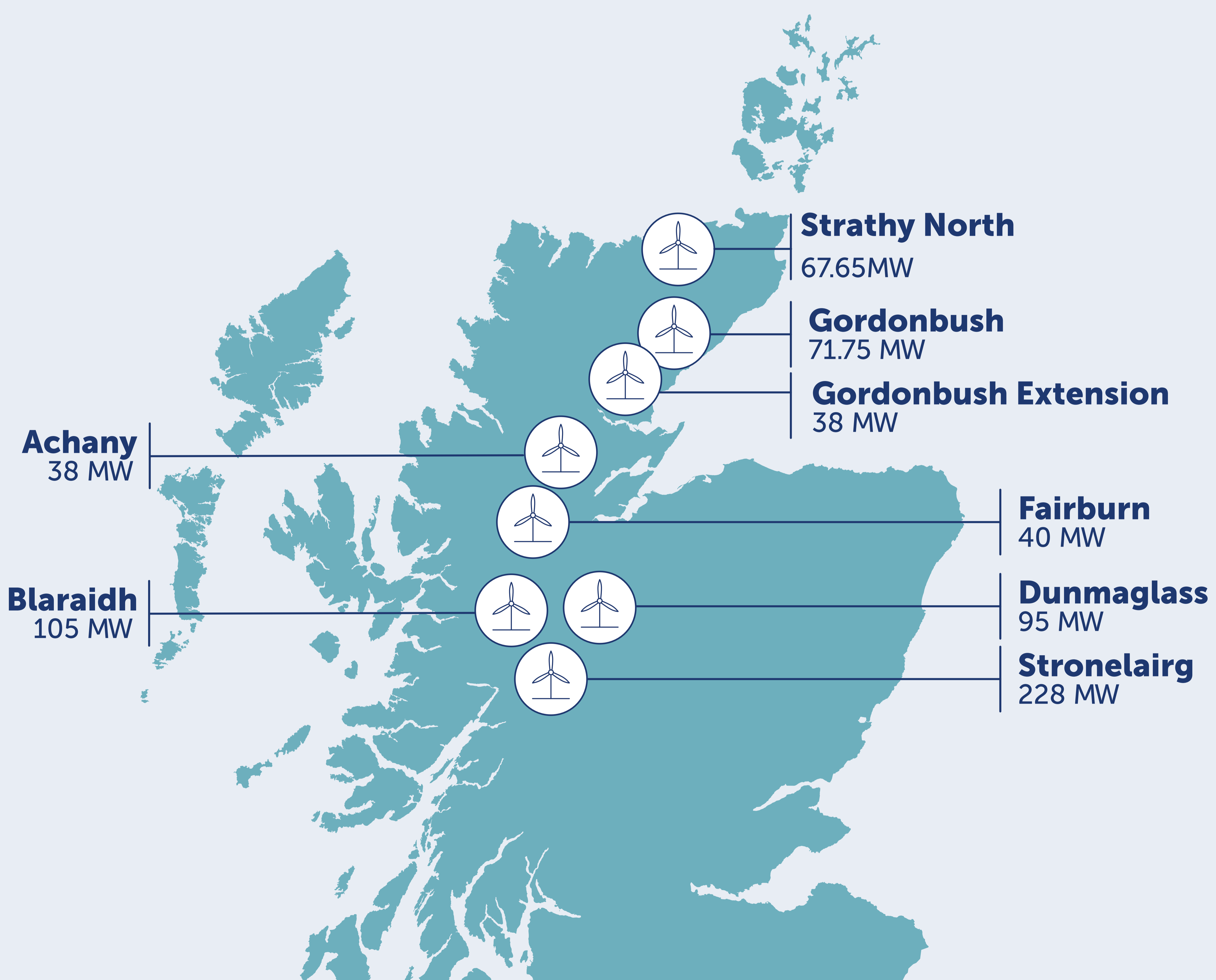
Our highland developments will play an important part in helping the UK meet its climate goals and ending reliance on volatile energy markets, providing more secure homegrown energy.



SSE Renewables in the Highlands

SSE Renewables has a long history in the Highlands, starting 80 years ago bringing power to the glens via hydro-electricity. As technologies advanced, we have harnessed the power of wind with our onshore and offshore wind farms, delivering clean, renewable energy to homes and businesses across the Highlands and beyond.

We operate eight onshore wind farms across the Highlands, generating 685MW of power, helping to generate clean energy for 680,000 homes.





Strathy South Wind Farm

Strathy South is located to the south of SSE Renewables' operational Strathy North wind farm, approximately 12km to the south of Strathy village.

Strathy South was granted consent by the Scottish Government in November 2021.

The development will make a valuable contribution to legislated climate change targets and government policy objectives whilst increasing local economic benefits.

35 turbines
200m tip height



Approximatley
200,000
homes could be powered*

Grid capacity of 208MW

208MW

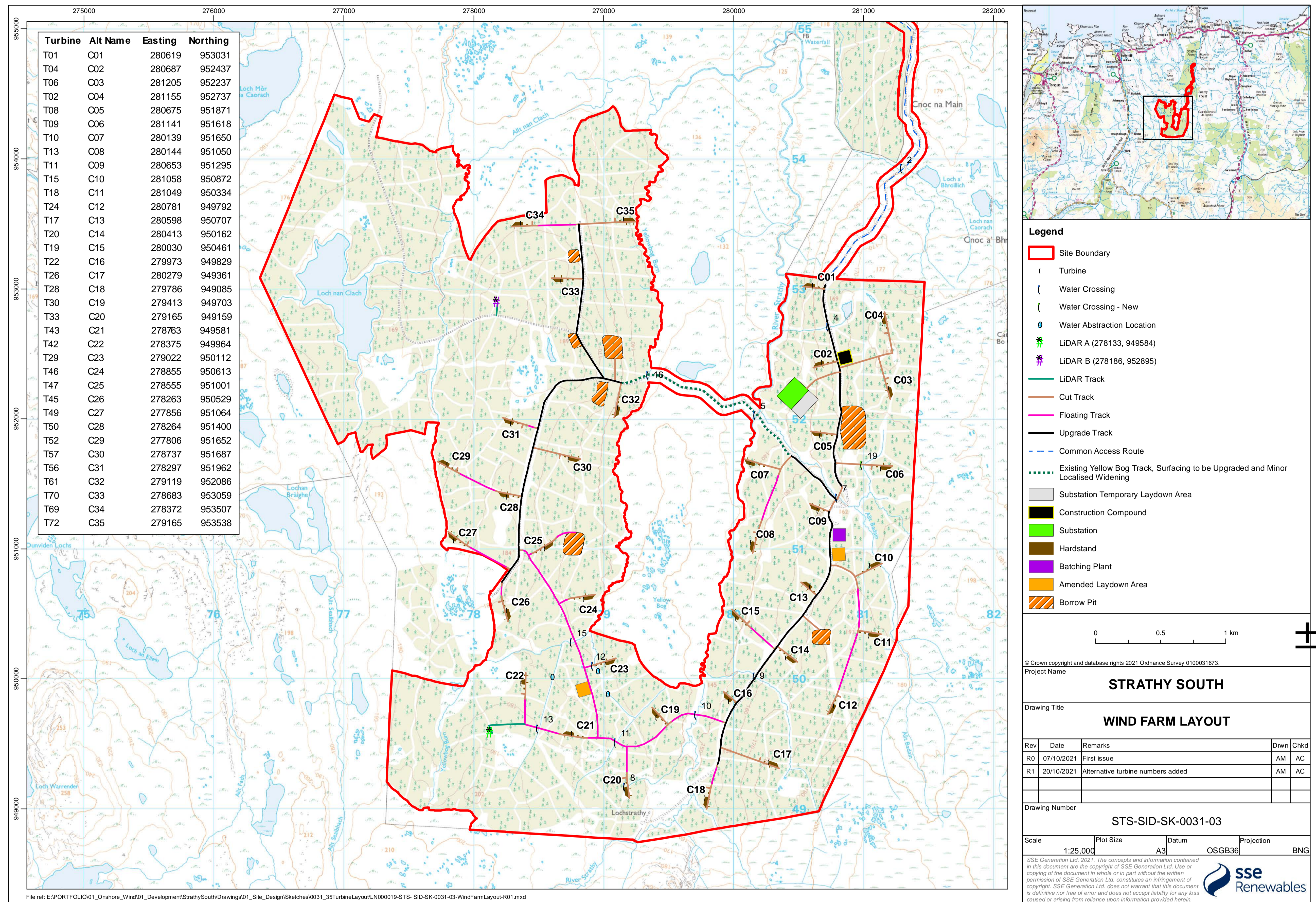
Up to

162m

Rotor Diameter



*200,000 homes powered per annum based on Typical Domestic Consumption Values (Medium Electricity Profile Class 1,2900kWh per household; OFGEM, June 2021), typical 50% projected wind load factor, and projected installed capacity of 208MW



Find out more at sserenewables.com/strathysouth

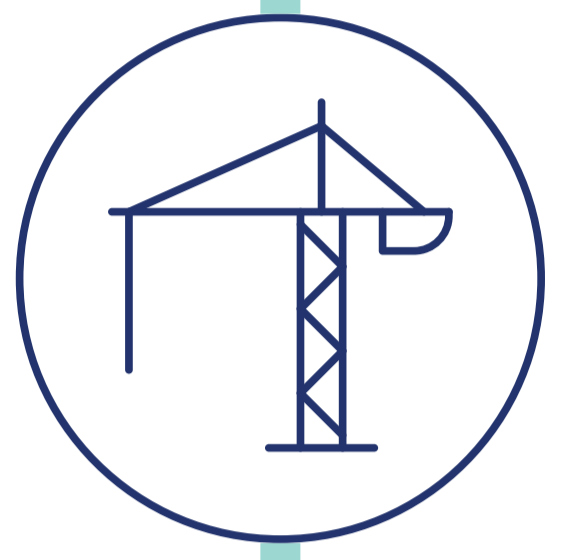


Next Steps for Strathy South



Offsite Works 2023 - 2028

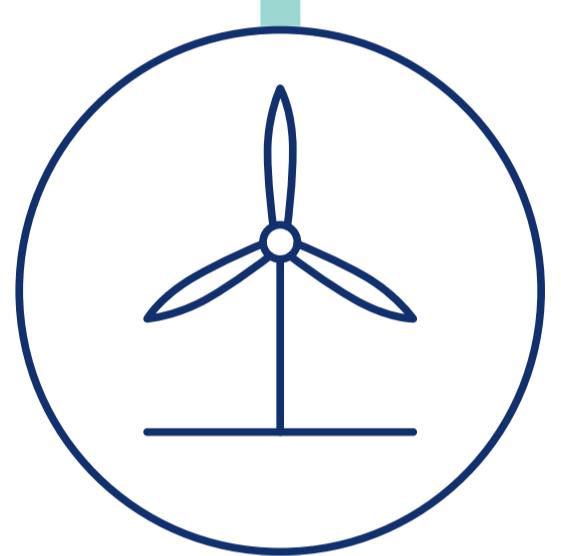
1,000 hectares of conifer forest felled in order to facilitate windfarm construction and to enable forest to bog restoration across the entire windfarm site.



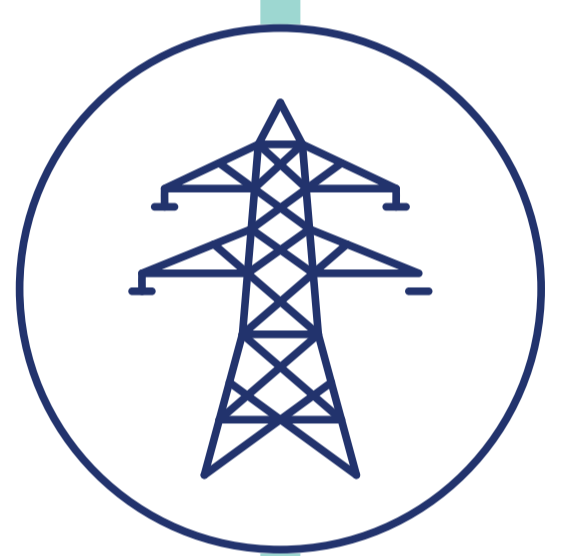
Main Construction of Windfarm Spring 2025



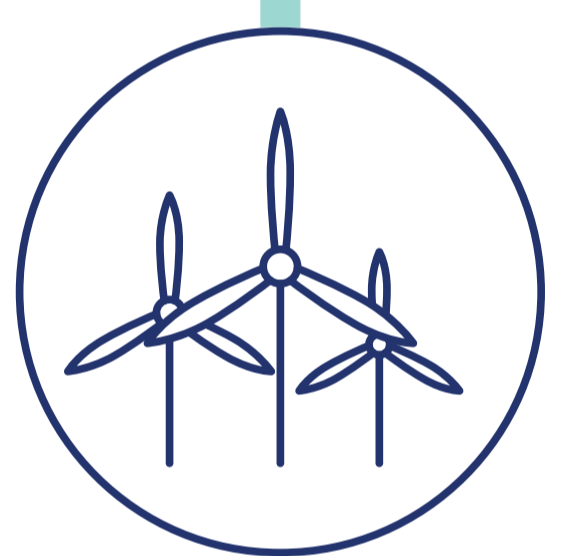
Substation Construction Works Summer 2026



Wind Turbine Delivery and Installation Works Oct 2026 - Autumn 2027



Grid Connection April 2027



Construction Complete Winter 2027



Handover to Operations Winter 2027



Dounreay

Proposed temporary turbine laydown area

Construction of Strathy South wind farm requires the transportation of abnormal loads, from Scrabster Harbour to Strathy South Wind Farm. The wind turbine blades are the largest components, at 79.5 meters in length. The largest diameter tower section is 5m wide.

SSE Renewables propose to use an area of land at Dounreay, due to limited storage at the harbour. The Dounreay site provides a good location for a laydown area storage site, as it sits on the main turbine delivery route.

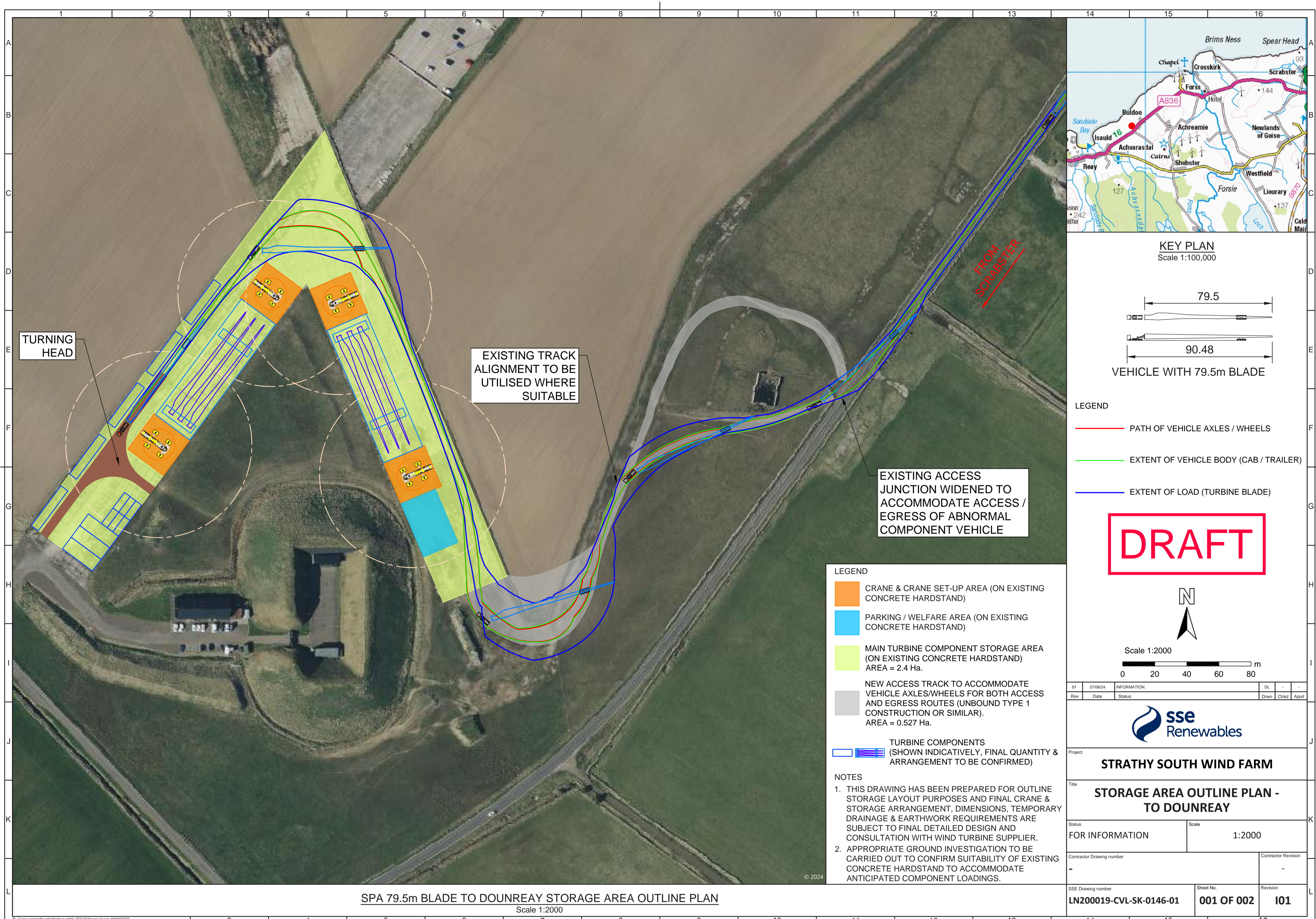
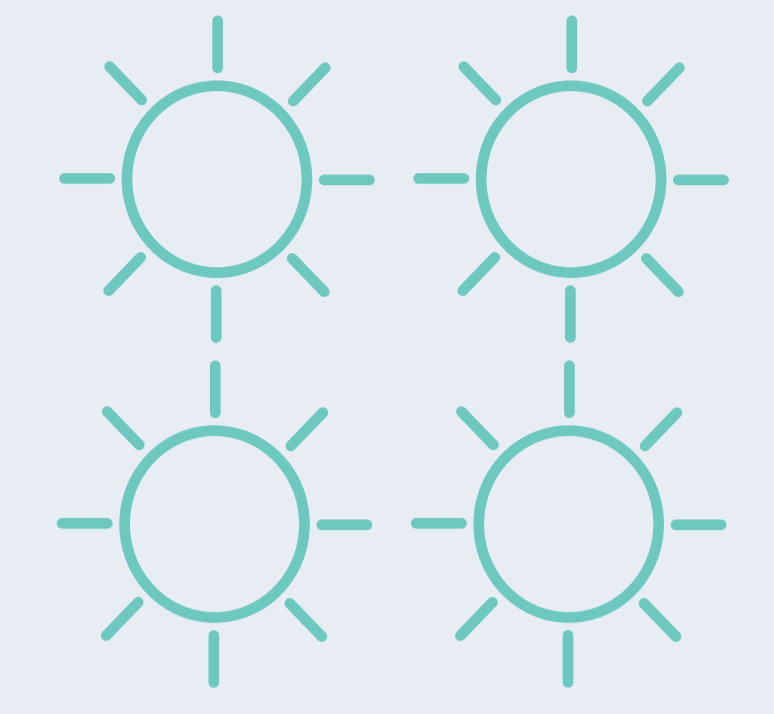
The proposed development will broadly consist of a hardstand area to accommodate vehicle access, parking, loading and unloading, an office, crane hard stand areas and a main turbine component storage area. The site area will be approximately 3 hectares.

The site would be required for a period of approximately 2 years, from the development stage to potential full reinstatement of the site (final site re-instatement to be confirmed).



Dounreay

Proposed temporary turbine laydown area

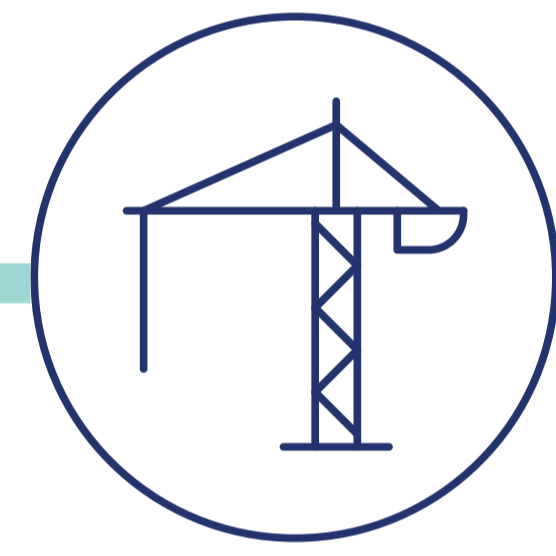


Drawing prepared for outline storage purposes only. Final crane and storage arrangement, dimensions, temporary drainage and earthwork requirements are subject to final detailed design and consultation with the wind turbine supplier.

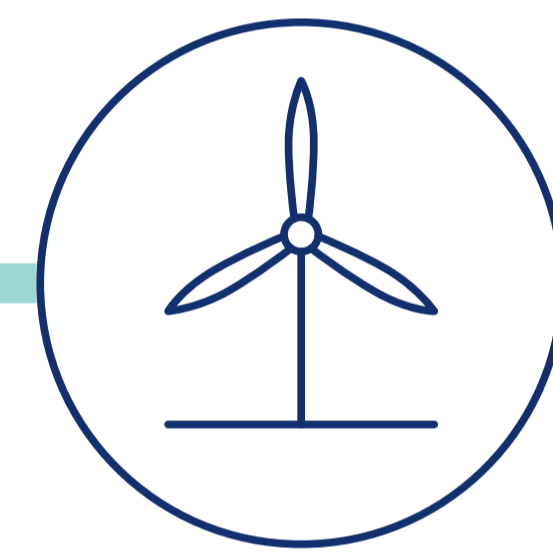
Timeline:



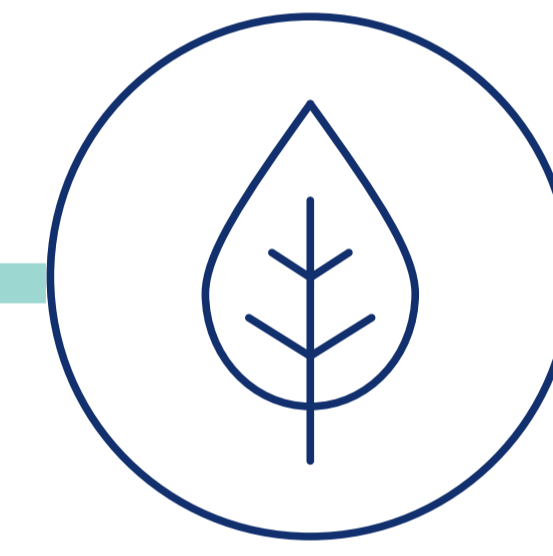
Planning application submission/determination
May–Dec 2025



Construction of Site approx
April–Oct 26



Delivery and movement of Turbines approx
Oct 26–Aug 27



Reinstatement of Dounreay Site
Sept 2027

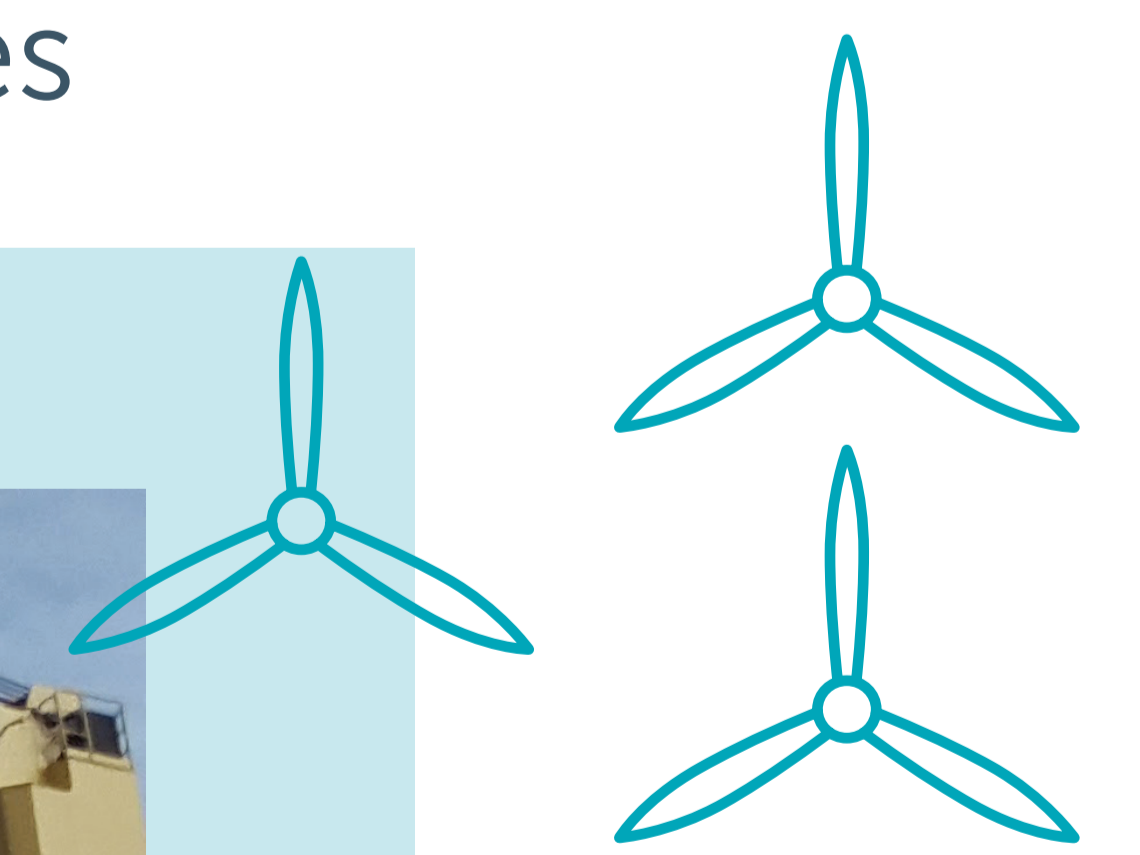
Activities on Site.

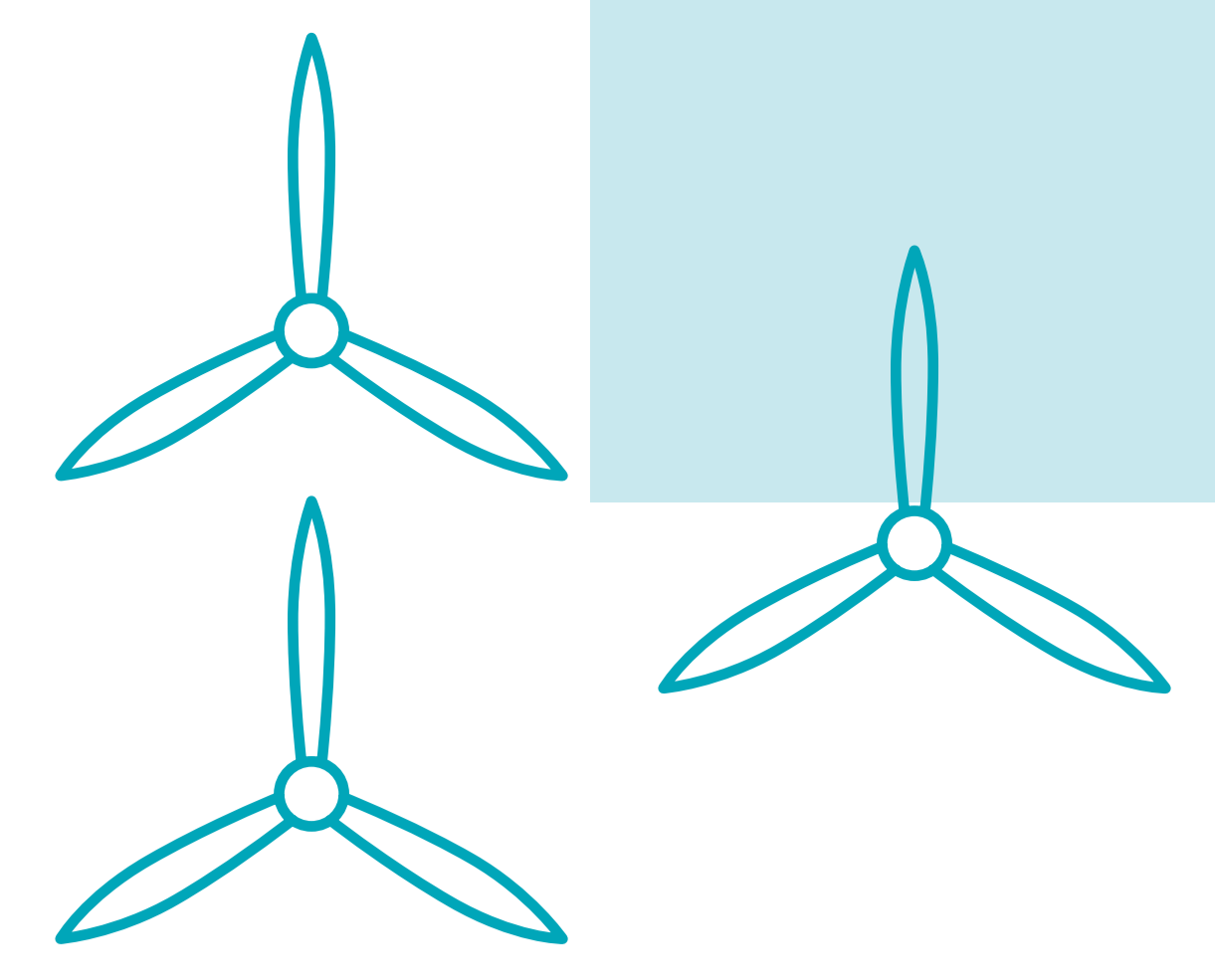
Turbine Components will arrive at Scrabster Harbour, where they will be unloaded from the ship promptly to allow other shipments into the harbour.

The Turbine components will be loaded on to specialist trailers and transported to the laydown area, where the turbine components will be stored. Due to limited space in Scrabster itself, a combination of Scrabster and Dounreay will be used for component laydown.

The components will remain at the Dounreay laydown area until they can be transported to Strathlyon Wind Farm at the most appropriate time. These components will be lifted onto the specialist trailer and will travel in convoy along the A836 to reach the site, escorted by Police Scotland.

To ensure local road users and the wider community have advance notice of turbine delivery movements, we will share delivery schedules ahead of deliveries





Turbine Deliveries

Moving Abnormal Loads

We know that one of a construction projects biggest impacts is the transportation moving to and from the site. Specifically, the delivery of the large turbine components, known as abnormal loads.

An abnormal load is a load that cannot be broken down into smaller loads for transport. In order to move an abnormal load within Scotland, abnormal loads must be escorted by Police Scotland under The Road Vehicles (Construction and Use) Regulations 1986.

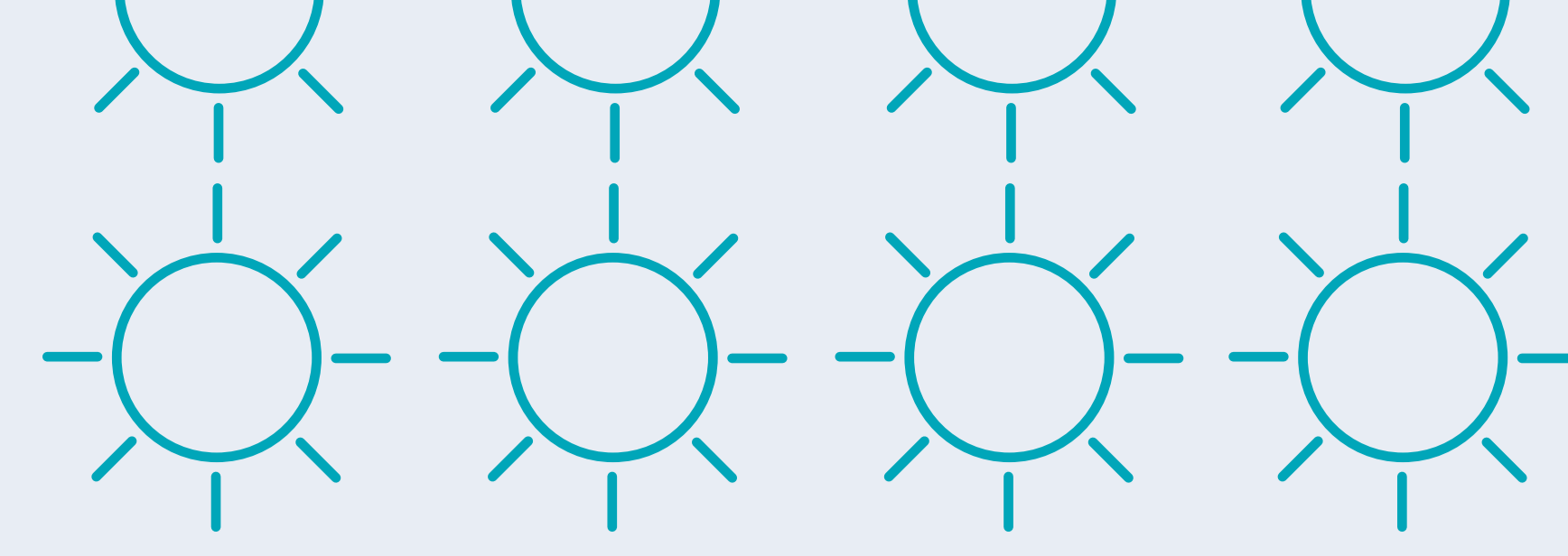
Months of careful planning and discussions with Police Scotland, Transport Scotland and The Highland Council take place to ensure convoys are planned to avoid peak travel periods and cause minimal disruption. Police Scotland will escort all turbine deliveries, they will determine the delivery days and times.

Abnormal loads are not permitted to travel during peak hours, this is to minimise the disruption to road users and to keep the road network flowing during key periods such as rush hour and school drop off and pick up. These are Monday-Friday between 6.30am-9.30am and 3.30pm-6.30pm.

Due to the nature of the road network across the Highlands, movements during the hours of darkness overnight or in the early morning are also not permitted. This is for the safety of road users, the delivery drivers and the escort teams.

Specialist trailers are used which include remote-controlled turning axles at the rear to allow them to successfully traverse tight bends. We have 35 turbines travelling to Strathy South Wind Farm, each turbine will be broken down into 11 components, totalling 385 abnormal loads. Traveling in convoy, in groups of 3, from the proposed Dounreay laydown area, along the A836. Police Scotland will escort 128 convoys to the site access road at Strathy South. A detailed delivery schedule will be drawn up ahead of deliveries, expected to start Autumn 2026.





Working with the Community

Delivering benefit locally

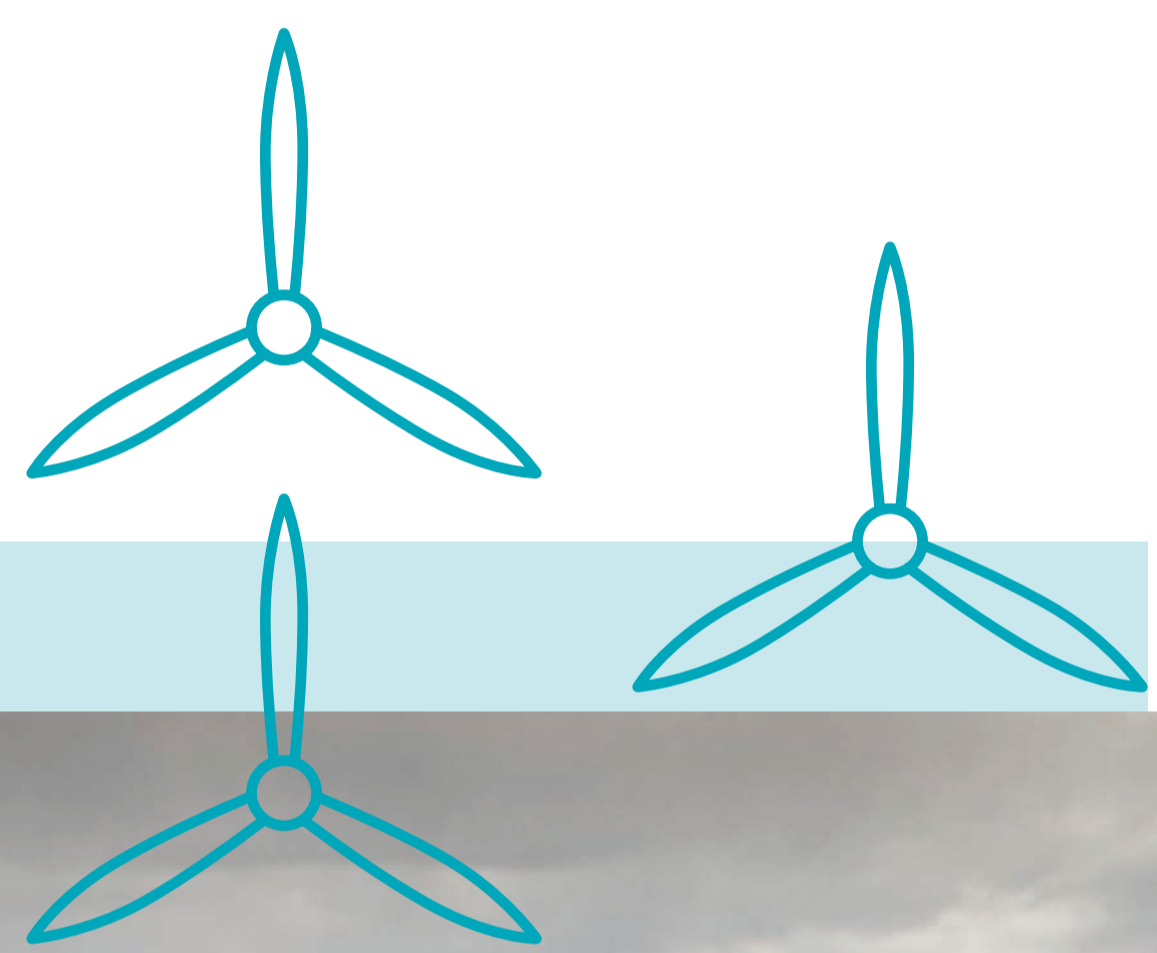
SSE Renewables has a long-term commitment to invest in our local communities. Over the next 25 years the SSE Renewables' Community Benefit Funds will generate at least £315 million across all UK and Ireland projects with a £100 million of that being delivered across the Highlands.

SSE Renewables is one of the world's largest developers of renewable energy. We have always believed in sharing the value of our renewable energy projects with communities, maximising the benefits of local, sustainable power.

We made a commitment in 2012 to invest in local communities. Our ambition is to make sure every single penny of that money is spent wisely; it makes a difference and reflects the priorities of local people. We think the best way to achieve this is for the grant decisions to be made by local people.

A community investment fund will be established for Strathy South valued at **£5,000** per MW, with **£2.5k** distributed to local communities and **£2.5k** to our regional Highland Sustainable Development Fund. The funds will be available once main construction starts.

To find out more about the funds, scan our QR code:





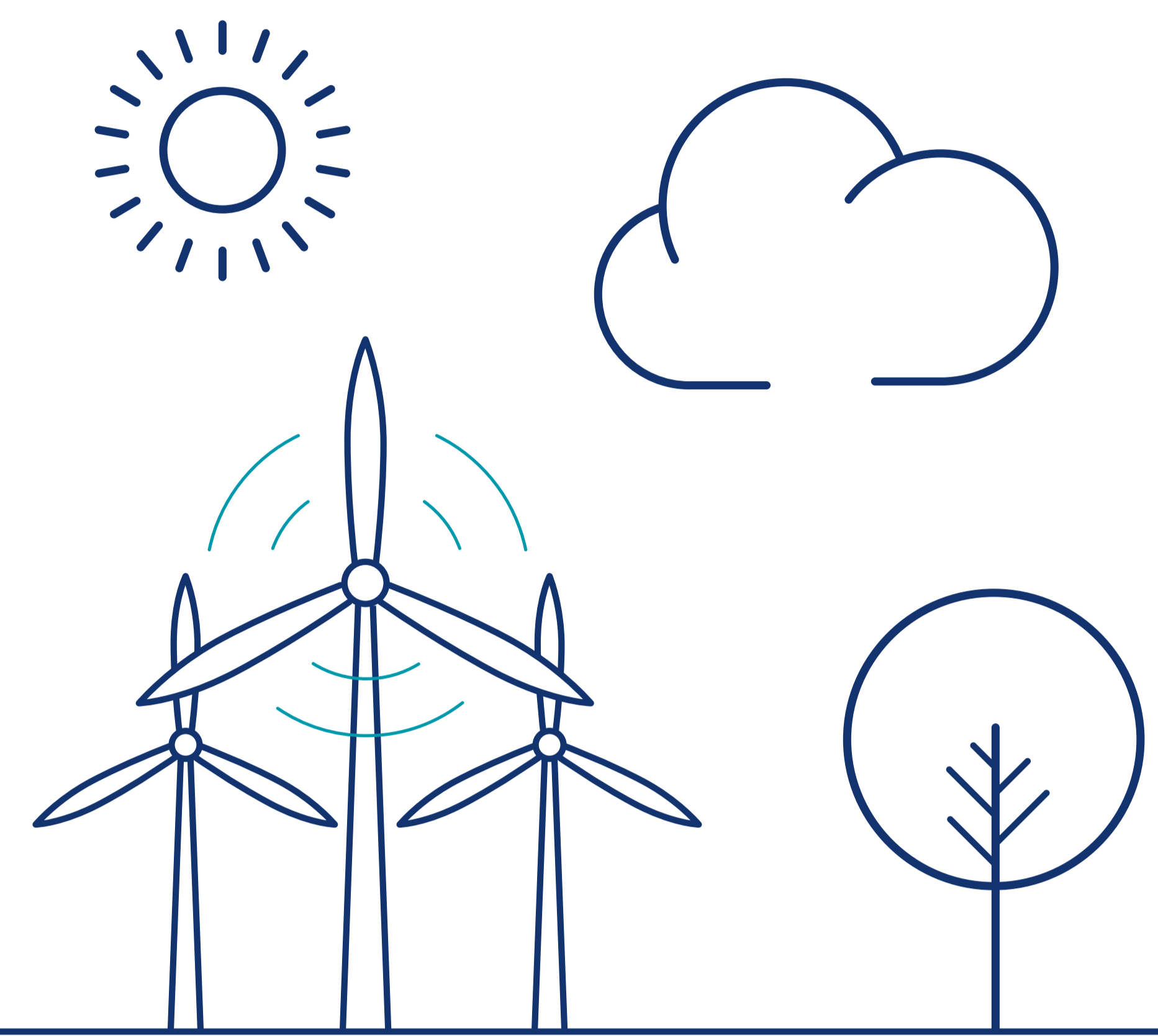
Powering Change In Our Local Communities

Since 2014 the SSE Renewables Strathy North Fund has awarded over £1,600,000 in grants, across the three community council areas of Melvich, Strathy and Armadale, and Bettyhill, Strathnaver and Altnaharra.

These projects included; strategic legacy projects, enhancing local services, bringing new services into the area, supporting culture and heritage and many more which have brought benefits to these local communities.

approximately
200
projects and initiatives

£4.5million
in local projects between
2014 and 2039.



Armadale Village Hall

Armadale Village Hall Awarded £326.5k of funding to help the community of Armadale to build a new village hall. The new building replaced the old corrugated-iron roofed Armadale Hall, which dated back to the 1920s.

The hall first opened its doors in 2021 to facilitate the Covid-19 vaccination service for residents of the wider community. The hall will be the centre of community life for years to come and includes cutting edge energy efficiency measures and an electric charging point.



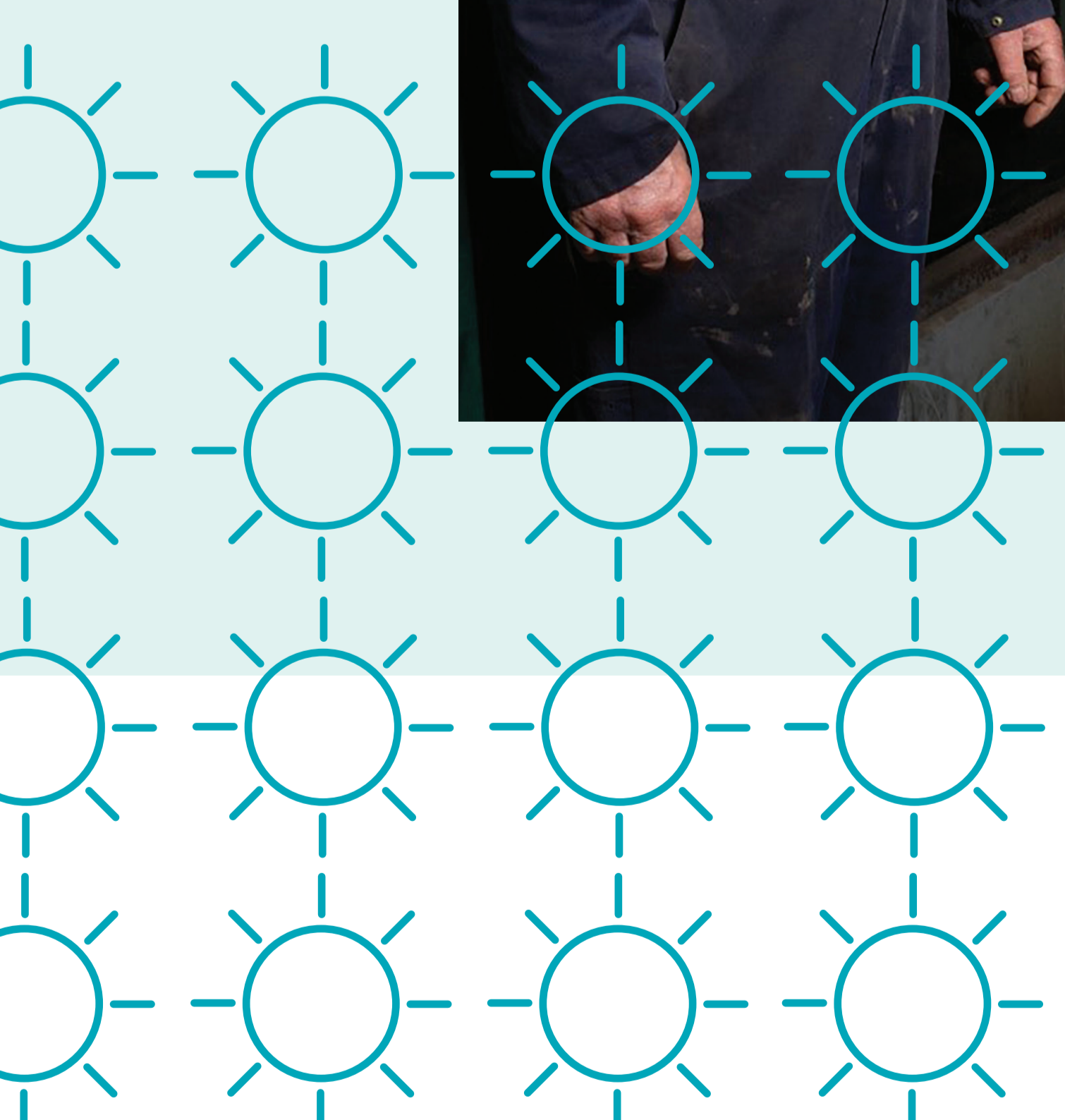
Investing in Traditional Music

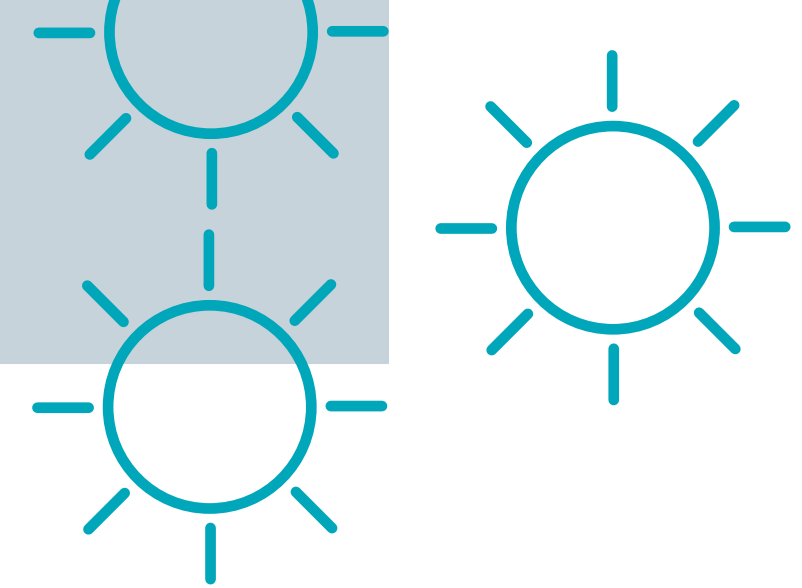
Awarded £52,040 to deliver a multi-year project to enable local people to learn, experience and participate in traditional music. The programme is being delivered across the north coast of Sutherland from Melness to Melvich and includes weekly tuition classes and professional lessons in Gaelic song, accordion, bagpipes, and fiddle. The programme culminates in an annual week-long summer Feis with performances, ceilidhs, classes, and activities for all ages.



Developing Tomorrow's Workforce

Investing in young people remains a central focus for our community funds and we have a number of apprenticeship programmes supported by our funds. The apprenticeship programmes match a local young person with a key local business and ensure that there are viable employment opportunities to retain young people in the local area, thus ensuring that the economy benefits from thriving businesses. Our Strathy North Fund supports the Farr North Apprenticeship Scheme which is managed by the Farr North Community Development Trust.





Sustainable Development Fund

The Sustainable Development Fund is in addition to our local community funds and supports strategic projects in the regions where SSE is operating. It allows the benefits of our renewable energy developments to be accessible to a wider area and is directed to projects that can achieve significant impact in local communities. We expect the fund could be worth over £57 million over the next 25 years.

SDF celebrated 10 years of delivery in November 2023. Since then its launch, £13.5m has been invested in almost 240 community projects across the regions we operate in.

Strathnaver Museum

With funding of £150,000 from the SSE Highland Sustainable Development Fund and £35,000 from the SSE Strathy North Community Fund, a large funding package of over £2m was secured to carry out a major transformation of the museum design and layout.

The museum is housed in a grade 2 listed former church that was built in 1774 and its main theme records the tragic story of the Highland Clearances. The major refurbishment of the building was carried out to address its limited facilities and restrictive layout, to develop the museum as a modern community heritage hub.

The museum's ambitious refurbishment, which includes a new annex building as well as innovative interpretation and displays, has greatly enhanced the visitor experience enabling people to explore and gain a deeper understanding of the area's rich culture and history.



£13.5m
invested in 238
projects since 2013

£8,290,238
Highland

£917,533
Perth and Kinross

£2,849,580
South Lanarkshire

£758,855
Dumfries and Galloway

£766,753
Scot Borders

To find out more about how to apply to the funds scan our QR code:





What happens next?

This exhibition is the first stage in an ongoing conversation between SSE Renewables and stakeholders like you, who have an interest in the proposal. This is an opportunity for us to share our plans and is an opportunity for you to raise questions, concerns, ideas or add any comments that can be considered as part of the development process.

We invite you to join us at our second exhibition on the **4th March** at:

**Reay Village Hall,
Thurso
KW14 7RE**

Between 2pm-7pm

Where we will share an update on the proposal and feedback from the community.

Keeping in touch

Our ambition is to work collaboratively with our stakeholders during the development, construction and operation of our assets, so that as many areas as possible can benefit positively from our proposals.

We know that there is no one size fits all approach when it comes to working with the communities in which we work. That is why we seek to make ourselves as accessible as possible.

Eilidh Edgar
Stakeholder Engagement Manager

✉ eilidh.edgar@sse.com ☎ 07879992917

